

Enjoy the privilege of Surrounding Amenities



AEON MALL Bandar Dato' Onn
Approx 4.3 km



TESCO Setia Tropika
Approx 4.9 km



The Mall MID VALLEY South Key
Approx 11.5 km



PARADIEM MALL Johor Bahru
Approx 15.4 km



AEON MALL Tebrau City
Approx 16.4 km



IFA Tebrau City
Approx 18.1 km



TOPPEN Shopping Centre (Opening Soon)
Approx 12.1 km



McDonald's Setia Tropika
Approx 7.0 km



KFC Setia Tropika
Approx 7.4 km



STARBUCKS Setia Tropika
Approx 7.3 km



Pizza Inn Setia Tropika
Approx 7.4 km

MAYBANK Setia Tropika
Approx 7.3 km

RHB Islamic Bank Setia Tropika
Approx 7.8 km

AMBANK Setia Tropika
Approx 7.3 km

YONG LEONG Bank Setia Tropika
Approx 7.8 km

FAIRVIEW Int. School Johor Bahru
Approx 4.4 km

FAIRVIEW Private & International School
Approx 4.4 km

Malaybank College of Hospitality & Management
Approx 3.8 km

Malaybank College Johor Bahru
Approx 3.8 km

SUNWAY University College
Approx 3.8 km

SOUTHERN University College
Approx 17.3 km

SK (C) Puan Yew 5
Approx 4.0 km

SK (C) Thai Hong
Approx 4.0 km

KPJ Bandar Dato' Onn Specialist Hospital
Approx 12.3 km

Solemi Dental Hospital
Approx 10.3 km

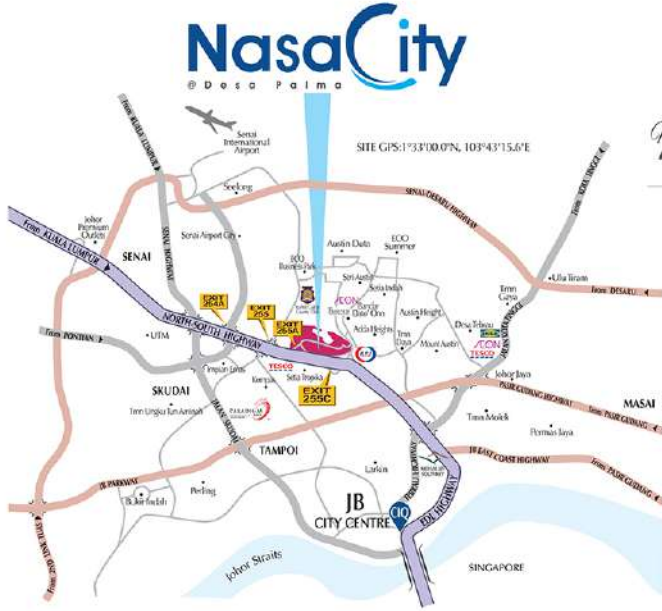
Kongas Medical Centre
Approx 2.5 km

Starhill Golf & Country Club
Approx 2.4 km

Austin Heights Water & Adventure Park
Approx 1.9 km

Austin Heights Golf & Hotel Resort
Approx 6.3 km

Johor Bahru Impregon Johor Bahru
Approx 7.7 km



The Centra Residences is adjacent to the North-South Highway, and is surrounded by an efficient traffic network accessible to all major highways, Johor Bahru city centre and CIQ-Singapore via EDL Highway.



EXIT 255A to Desa Palma

Strategic Partnership:

IJM LAND JKG

Developer:

NASA LAND SDN BHD

No. 1, Jalan Palma Puteh 4, Desa Palma, 81100 Johor Bahru, Johor, Malaysia.

Phone: +607-3578899

Fax: +607-3591188

Website: www.nasacity.com

Instagram: www.instagram.com/nasacity.com

Facebook: www.facebook.com/nasacity.com

Twitter: [www.twitter.com/nasacity.com](https://twitter.com/nasacity.com)

LinkedIn: www.linkedin.com/company/nasacity.com

Google+: www.google.com/+nasacity.com

YouTube: www.youtube.com/channel/UCnasacity.com

WhatsApp: wa.me/6073578899

Telegram: t.me/nasacity.com

Skype: www.skype.com/name/nasacity.com

Discord: discord.gg/nasacity.com

+607-3578899

<http://www.nasacity.com>



Sales Office: Mon - Fri: 9:00am - 6:00pm

Open Daily: Sat - Sun & Public Holidays: 10:00am - 5:00pm

Fax: +607-3591188

Disclaimer: The information, perspectives, photographs, floor plans and proposed development also contained in this Leaflet are subject to change and cannot form part of an offer or contract. All drawings and pictures are artist's impression only and all measurements are approximate. While every reasonable care has been taken, NASA LAND SDN BHD and its Associated Agencies cannot be held responsible for any inaccuracies.

Developer: IJM Land Bhd. (10041-011-000000000) • IJM Land Bhd. (10041-011-000000000) • IJM Land Bhd. (10041-011-000000000) • IJM Land Bhd. (10041-011-000000000) • IJM Land Bhd. (10041-011-000000000) • IJM Land Bhd. (10041-011-000000000) • IJM Land Bhd. (10041-011-000000000) • IJM Land Bhd. (10041-011-000000000) • IJM Land Bhd. (10041-011-000000000) • IJM Land Bhd. (10041-011-000000000)

Reg. No. 10041-011-000000000 • Class of Copyright: © December 2017 • Land Bureau: Berhad • Insurance: N.A. • 10% Discount for Residents.

Blueprints: 10041-011-000000000

Blueprints: 10041-011-000000000

Blueprints: 10041-011-000000000

Blueprints: 10041-011-000000000

Blueprints: 10041-011-000000000

Blueprints: 10041-011-000000000

Blueprints: 10041-011-000000000

Blueprints: 10041-011-000000000

Blueprints: 10041-011-000000000

Enjoy the very Essence of Fine Living at the Top



NasaCity INSPIRING COMMUNITY LIVING



STRATEGIC LOCALITY • GREAT ACCESSIBILITY • EXCELLENT CONNECTIVITY

NasaCity
@ Desa Palma



Centrally located for Convenience

Centra Residences strikes the *perfect balance* of lifestyle, location and community.

The Centra Residences is a *freehold* service Apartment, and is centrally situated in a strategic location surrounded by *matured residential developments*, which is just a short distance away from the Johor Bahru city centre.

It is situated near the commercial and entertainment hub of the Setia Tropika district, and enjoys an excellent *accessibility* to shopping, education, banking, medical, business and a host of other lifestyle and leisure amenities.

With all its *well-connected convenience* of surrounding urban amenities, the Centra Residences is just minutes away from the KPJ Bandar Dato' Onn Specialist Hospital, Starbucks Setia Tropika, McDonalds Setia Tropika, AEON Bandar Dato' Onn, Fairview International School, TESCO Setia Tropika and The MALL Mid Valley Southkey, just 10 name a few.

With Recreational Activities Completed With CCC Ready To Move In Limited Units Available

FREEHOLD



Swimming Pool



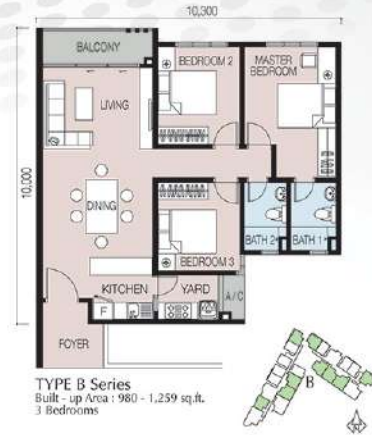
Water features with lush GreenScope



Rooftop Garden with BBQ



View surrounding landscapes



URBAN LIVING REACHES NEW HEIGHTS OF GLAMOUR AT CENTRA RESIDENCES



Gymnasium with a view



Sauna Room



Guardhouse at Entrance