

Residensi
Hon
 漢城 @ City Garden Commercial Centre
 Ampang

From
RM383,000**
 Limited Units



The Heart of Nirwana

Lifestyle Amenities | Strategic Accessibility | Super Infrastructure

Newly Completed with VP

- Abundance of amenities
- Great Place
- Lots to do here
- Easy to get around
- Restaurants, Shopping, Activities etc
- 10% Discount
- 10% + additional 5% rebate
- RM10,000 cashback
- 5 years Interest FREE loan for 30% remainder



HOC
2020

HOME OWNERSHIP CAMPAIGN



Limited Units Available

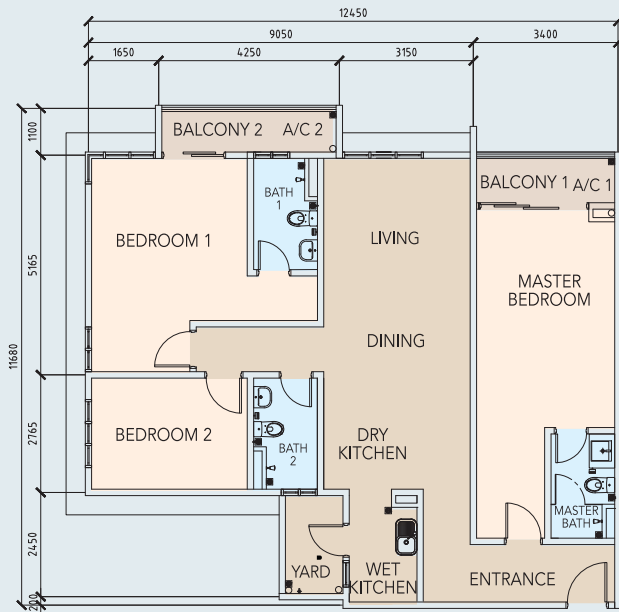
* Terms & conditions apply
 ** After discount / rebate for certain unit



TYPE B Dual Key

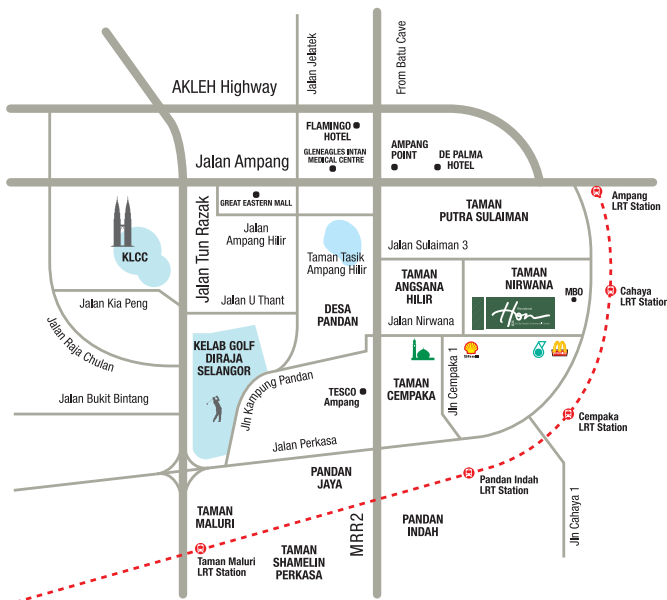
1,335 Sq.ft

Price from RM685.000**



- Free Carpark
- Free Air Conditioners
- Free Kitchen Cabinet
- Free Wardrobe to Master Room
- Free SPA & Loan Legal Fees

** After discount, Rebate

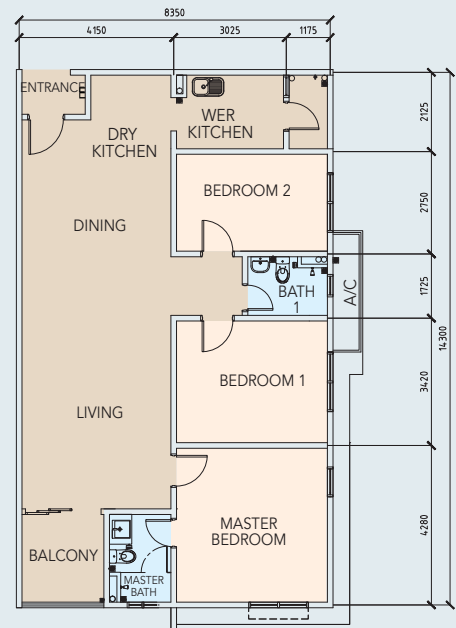


GPS Coordinates: N3.147459 E101.750471

TYPE E

1,280 Sq.ft

Price from RM634.500**



- Free Valuation Fees (Up to RM2,000)
- Free Stamp Duty
- Free SPA & Loan Disbursements (Excluding Stamp Duty on Mot/Loan)

Show Unit Open For Viewing

Monday to Saturday : 10.00am - 6.00pm
Sunday : 10.00am - 4.00pm

1-B-3A, City Garden Commercial Centre, Jalan Nirwana, Taman Nirwana, 68000 Ampang, Selangor

Strategic Location, Location, Location

- Comprehensively located
- Walking distance to Cahaya & Cempaka LRT station
- Excellent connectivity with major highway
- Only 7km to KLCC
- PLENTY of opportunities and advantages

Super Low Density

- Xtra exclusive, Rare, Valuable, Matchless, Peace, Security, Safety
- Only 8 units per floor
- Limited to 172 units only

Excellent Design

- Spacious, Comfortable, Privacy, Modern, Cosy, Generous, Impress
- Holistically designed

Developer:

SRI SELTRA SDN BHD 23300-T

33, Jalan Nirwana 35, Taman Nirwana, 68000 Ampang, Selangor, Malaysia

Tel : +603 - 9200 6276 / 9285 6900 Fax: +603 - 9283 3698

Email: hon.residensi@citygroup.com.my

www.honresidensi.com

For more details, call

03-9200 6276 (Main)

012-296 9948 (Kevin)

016-373 5002 (Pritt)

017-657 9510 (Sue)

