

# TMW

Maxwell

DEFIANCE \ NON-CONFORMIST \ QUESTIONING THE  
FUTURE \ MULTI-HYPHENATES \ HYPER-CONNECTED \ NOT  
DEFINED BY ONE THING \ AMBITION \ DO-MORE, DO-ALL \ BE  
YOURSELF \ MAKING YOUR OWN HISTORY \ SHAPING YOUR  
OWN TOMORROW \ STAY TRUE \ BREAK BOUNDARIES \ THE  
ART OF BEING UNIQUE \ DEFIANCE \ NON-CONFORMIST \  
QUESTIONING THE FUTURE \ MULTI-HYPHENATES \ HYPER-  
CONNECTED \ NOT DEFINED BY ONE THING \ AMBITION \  
DO-MORE, DO-ALL \ BE YOURSELF \ MAKING YOUR OWN  
HISTORY \ SHAPING YOUR OWN TOMORROW \ STAY  
TRUE \ BREAK BOUNDARIES \ THE ART OF BEING UNIQUE  
\ DEFIANCE \ NON-CONFORMIST \ QUESTIONING THE  
FUTURE \ MULTI-HYPHENATES \ HYPER-CONNECTED \ NOT  
DEFINED BY ONE THING \ AMBITION \ DO-MORE, DO-ALL \ BE  
YOURSELF \ MAKING YOUR OWN HISTORY \ SHAPING YOUR  
OWN TOMORROW \ STAY TRUE \ BREAK BOUNDARIES \ THE  
ART OF BEING UNIQUE \ DEFIANCE \ NON-CONFORMIST \  
QUESTIONING THE FUTURE \ MULTI-HYPHENATES \ HYPER-  
CONNECTED \ NOT DEFINED BY ONE THING \ AMBITION \  
DO-MORE, DO-ALL \ BE YOURSELF \ MAKING YOUR OWN  
HISTORY \ SHAPING YOUR OWN TOMORROW \ STAY TRUE \

MULTI - HYPHENATE  
SPACES AT MAXWELL

# MAXWELL ROAD YTD

A building of historical significance that counts the Traffic Police, as well as Singapore's first driving test centre, among its former tenants.



Source: The Straits Times © SPH Media Limited. Reprinted with permission



# MAXWELL ROAD TDY

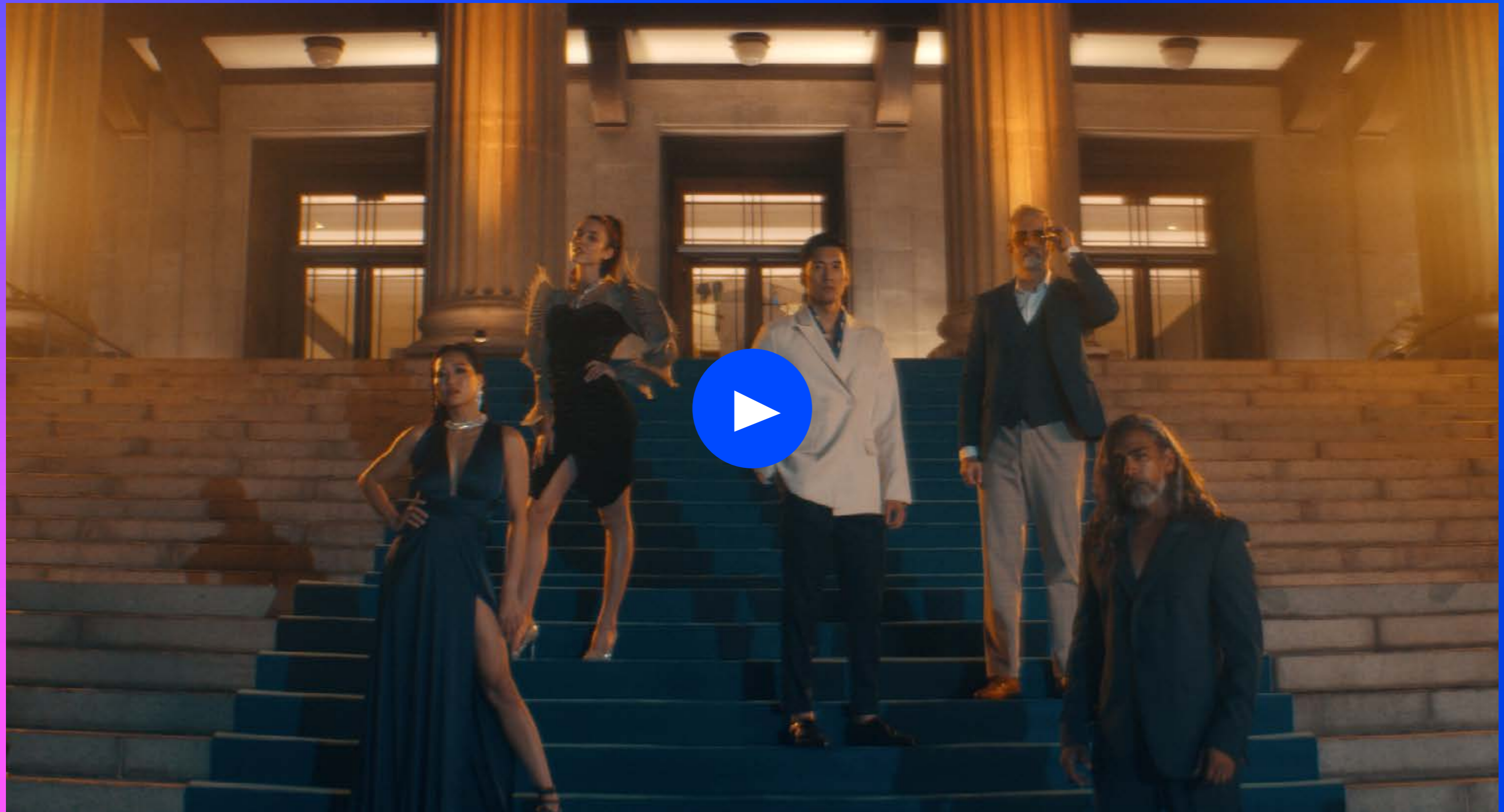
Present-day Maxwell Chambers is the world's first integrated dispute resolution complex with best-in-class facilities.



INFINITE  
TOMORROWS  
BEGIN **HERE**

Artist's Impression

# A NEW WAY OF LIVING SHAPED BY A NEW WAY OF THINKING

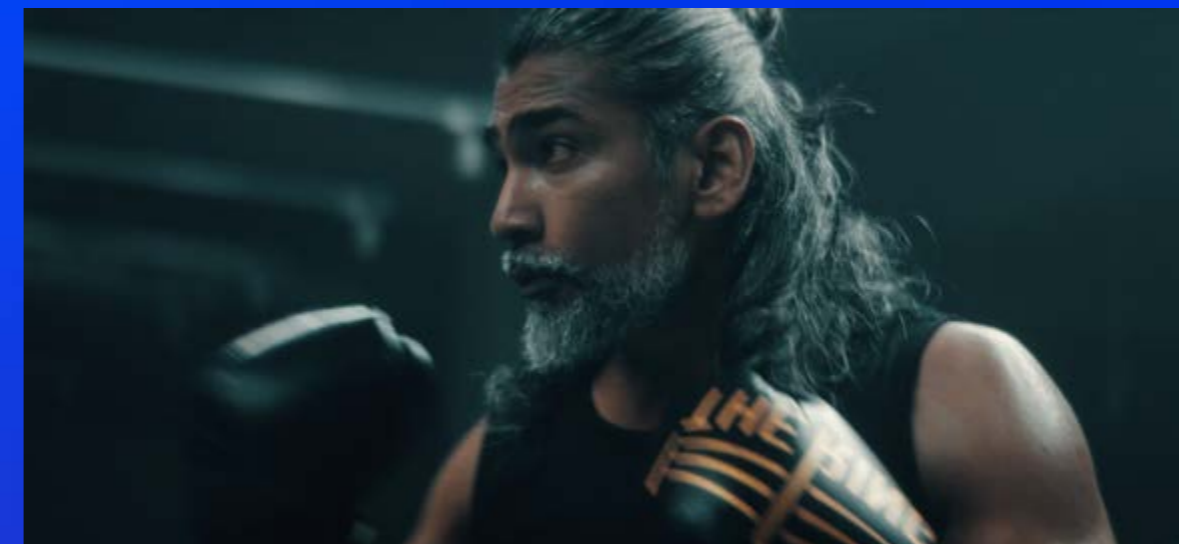


# THE WORLD'S NEIGHBOURHOOD





A young successful entrepreneur by day and socialite by night.  
An exuberant individual in constant search of new experiences in a multi-cultural society.



Pushing limits and boundaries not just in aircraft  
engineering but also his own physics as a boxer.  
Stronger, faster and never stopping.



Calm, elegant and composed both as an investor and a professional dancer.  
The choreographer of her life. Each step; always a precise and perfect move.



An academic professor who is more than meets the eye.  
Living another life as an experiential multi-disciplinary artist  
who explores new ways to visualise, taste and transcend.

# A NEW WAY OF LIVING SHAPED BY A NEW WAY OF THINKING

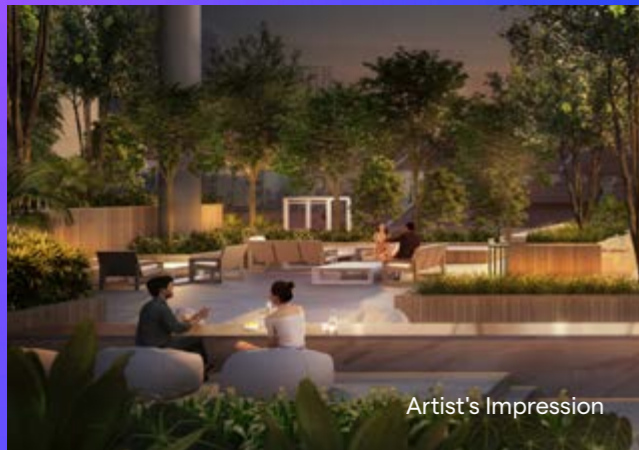
TMW Maxwell is a collection of multi-hyphenate spaces for tomorrow's multi-hyphenates. Truly-local, super-connected, hugely-productive globalists whose passion, curiosity and occupation defy categorisation and labels. TMW Maxwell is a new way of living shaped by a new way of thinking.



Artist's Impression

# / PART HOME / PART OFFICE / PART PARK / PART GALLERIA

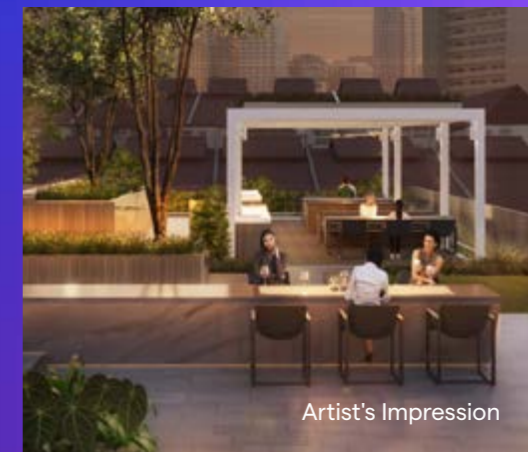
TMW Maxwell is designed for tomorrow's hybrid lifestyle. Just like how urbanites of tomorrow defy categorisation, TMW Maxwell blends home, office, park and gallery into one exciting offering.



Artist's Impression



Artist's Impression



Artist's Impression

# COME FORTH WITH US



# TMW ——— LIVES ——— HERE

## 4 - 20<sup>TH</sup> STOREY / PARK ON PARK













The green heart of Maxwell, accessible only by residents, is a focal point for you to socialise, connect, entertain and do it all. This is the Park on Park at TMW Maxwell.

## B1 - 3<sup>RD</sup> STOREY / SHOP AND DINE

The conveniences of the city come to life. Shop, dine, socialise and entertain right where you live.

## B1 / GATHER

A cosy amphitheatre set within a green wall and shaded by lush canopy. Gather here as a meeting place, a breezy lunch spot, or a weekend performance stage.

-  SHOP
-  WORK
-  READ
-  SWIM
-  MEDITATE
-  PLAY
-  LIVE
-  DINE
-  DRINK
-  MEET
-  GYM
-  GARDEN



Artist's Impression

# THE

# LIFESTYLE

TMW Maxwell is filled with possibilities, excitement and new experiences. Live, work, and play in the city like never before.



Artist's Impression

A cosy amphitheatre set within a green wall and shaded by lush canopy. Gather here as a meeting place, a breezy lunch spot, or a weekend performance stage.



THE COMMONS

Artist's Impression

The conveniences of the city come to life, as the multi-hyphenates of TMW Maxwell and the surrounding community converge to shop, dine, socialise and entertain.



**SHOP AND DINE**

Artist's Impression

# PARK

# ON

# PARK

## ROOF TMW HAVEN

Sky Pavilion  
Sky Lounger  
Sky Deck  
Outdoor Shower  
Infinity Sky Pool  
Sky Gym

## 15 - 16<sup>TH</sup> STOREY SKY POOL

Lazy Deck  
Sky Jacuzzi  
Outdoor Shower

## 12<sup>TH</sup> STOREY SOCIAL GARDEN

TMW Social Club  
Social Lounge  
Social Blooms

## 9 - 10<sup>TH</sup> STOREY OUTDOOR LIVING ROOM

Breakout Pod  
The Living Room  
Plug and Play

## 4<sup>TH</sup> STOREY THE COURTYARD

Courtyard Dining  
Festival Lawn  
Courtyard Lounge  
Fitness Courtyard  
Courtyard Garden  
Farm-to-Fork Garden

## 20<sup>TH</sup> STOREY SKY LOUNGE

Panorama

## 18 - 19<sup>TH</sup> STOREY SKY BAR

All-day Bar  
Cocktail Bar

## 17<sup>TH</sup> STOREY WELLNESS TERRACE

Wellness Deck

## 13<sup>TH</sup> STOREY THE BAR LOUNGE

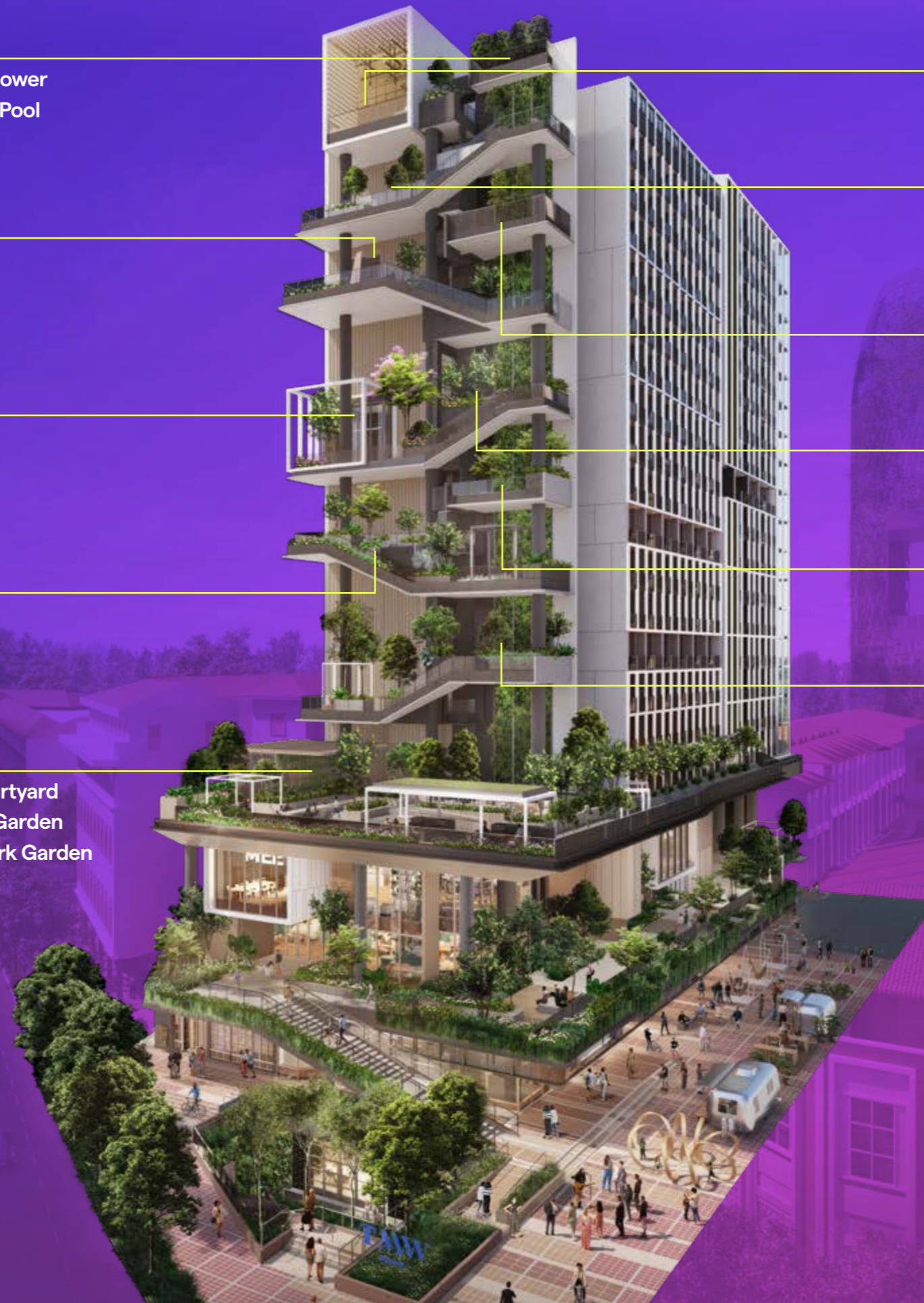
Plug and Work

## 11<sup>TH</sup> STOREY DO-IT-ALL DECK

Executive Lounge

## 6 - 7<sup>TH</sup> STOREY TMW STUDY

Reading Alcove  
Working Lounge



As lives and stories unravel at TMW Maxwell, a biophilic spectacle arises. Fronting the buzz of lively Maxwell Road are a series of vertically stacked gardens. Ascending from the pedestrian level in a breathtaking crescendo right up to the peak, these gardens are principally designed based on duality - versatile green spaces that adapt and change throughout any given day. While levels and amenities from the 4<sup>th</sup> storey onwards are exclusive to residents, the overall facade draws the admiration of all. Within it, a perfect synchrony of facilities, ambiances and spatial concepts.

Artist's Impression

Rub shoulders with neighbours. Wind the day down with a significant other. The Courtyard presents an exciting mix of amenities including a Festival Lawn, Courtyard Dining, and even a Farm-to-Fork Garden where great company is better enjoyed with your very own produce.

**TMW SOCIALISES HERE**

**COURTYARD DINING**

Artist's Impression



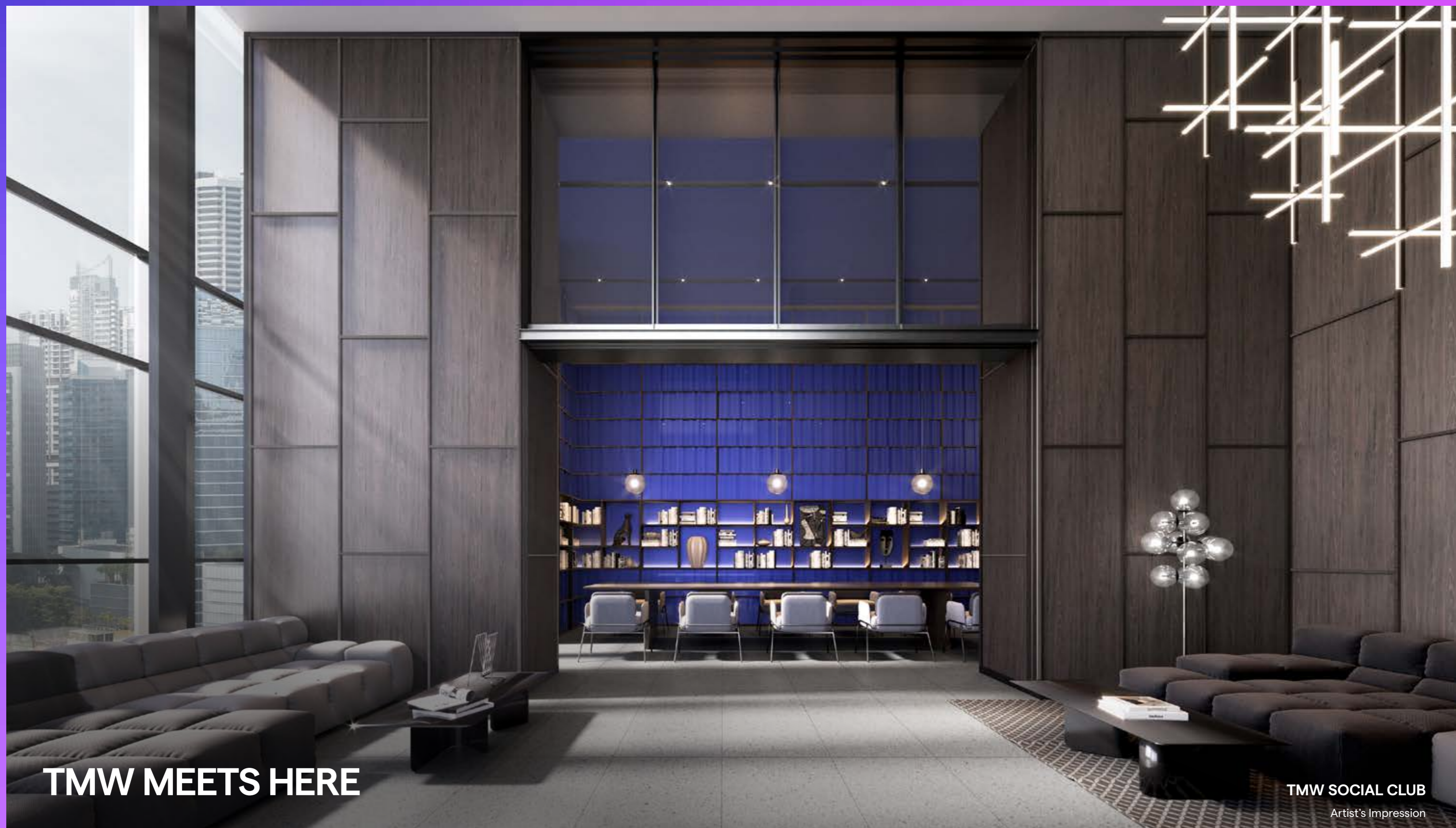
The Living Room is like an extension of home. Spacious enough to accommodate more pals and family on movie nights, and invitingly snug for when you wish to binge on your favourite shows.

TMW UNWINDS HERE

THE LIVING ROOM

Artist's Impression


Where you can feel exclusive yet, a sense of belonging. The TMW Social Club is a gateway to a private community made up of trendsetters, go-getters and of course, the multi-hyphenates of tomorrow.



**TMW MEETS HERE**

**TMW SOCIAL CLUB**

Artist's Impression

The image shows a luxurious rooftop pool and lounge area. On the left, a curved jacuzzi with a textured, copper-colored wall is surrounded by lush tropical plants, including large palm trees. A central island with more greenery sits in the pool. To the right, a curved lounge deck with a similar textured wall is visible. The pool is bordered by a glass railing, and the background features a city skyline at dusk with various high-rise buildings under a colorful sky.

Take an unhurried dip in the Sky Jacuzzi. Or lounge leisurely along the Lazy Deck. Whether you prefer being in the water or staying dry, taking things down a notch is a bliss on days when you crave a slower pace.

**TMW LOUNGES HERE**

**SKY JACUZZI**  
Artist's Impression

Panorama provides the perfect settings for hosting, impressing, or simply relaxing with your favourite wine, thanks to its impressive views from 20 storeys high.

**TMW IMPRESSES HERE**

**PANORAMA**  
Artist's Impression

Pace yourself along the city's pulsating beats in the Sky Gym that is well-equipped with both modern equipment and energy-boosting views.

TMW GYMS HERE

SKY GYM  
Artist's Impression

Every victory lap feels sweeter when you are closer to the star-lit sky. The Infinity Sky Pool is where you can head up to, to wind down. Or take in the city's skyline in all its glory.



TMW REFRESHES HERE

INFINITY SKY POOL  
Artist's Impression

# 1-BEDROOM + STUDY

Much like how its occupants defy the status quo, 1-Bedroom+Study units are laid out for optimum efficiency that belie their compact sizes.



Artist's Impression



Artist's Impression


## 2-BEDROOM PREMIUM

2-Bedroom homes offer more space for more of the things that multi-hyphenates seek when it comes to inspiration and fulfilment.




# MULTIPLE SMART FEATURES FOR THE MULTI-HYPHENATES

There is no place like home. For the multi-hyphenates of tomorrow, this certainly rings true here in TMW Maxwell where homes are fitted with multiple smart features that enable and empower simultaneous live, work and play lifestyles.




**SMART HOME HUB**

A centralised control hub that connects to all compatible devices seamlessly.



**DIGITAL LOCKSET**

Added convenience of touchless and remote door security.



**IP CAMERA**

Remote monitoring of in-house activities for extra peace of mind.



**SMART AIR CONDITIONER CONTROLS**

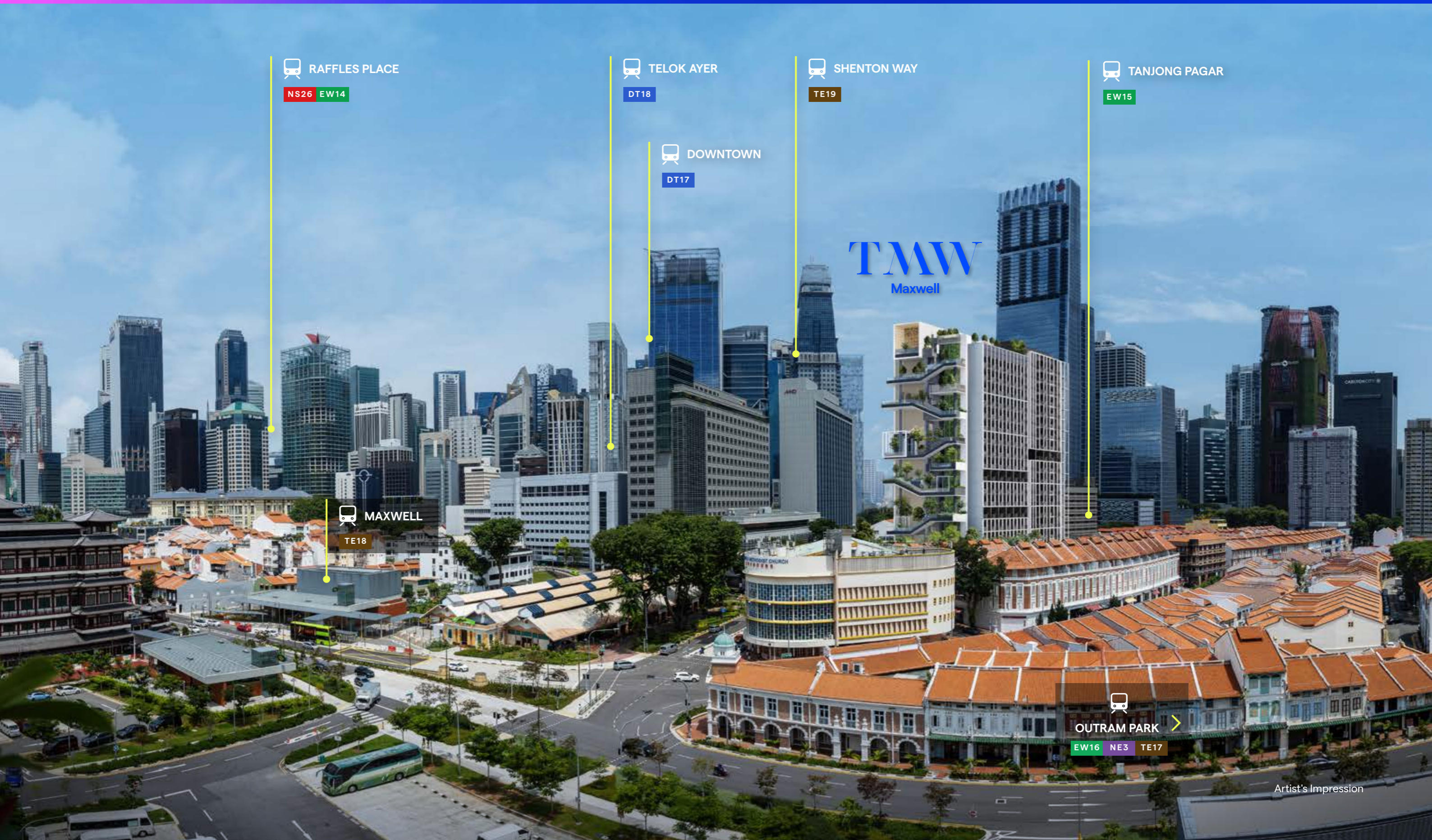
Wireless control over air conditioning optimises comfort levels even before every arrival home.

# BRANDED FINISHING TOUCHES

A beautifully curated material palette elevates the living experience, while premium fittings and appliances exude touches of elegance.



# AT THE HEART OF MULTIPLE ENCLAVES



 RAFFLES PLACE

NS26 EW14

 TELOK AYER

DT18

 SHENTON WAY

TE19

 TANJONG PAGAR

EW15

 DOWNTOWN

DT17

TMW  
Maxwell

 MAXWELL

TE18



OUTRAM PARK

EW16 NE3 TE17

Artist's Impression

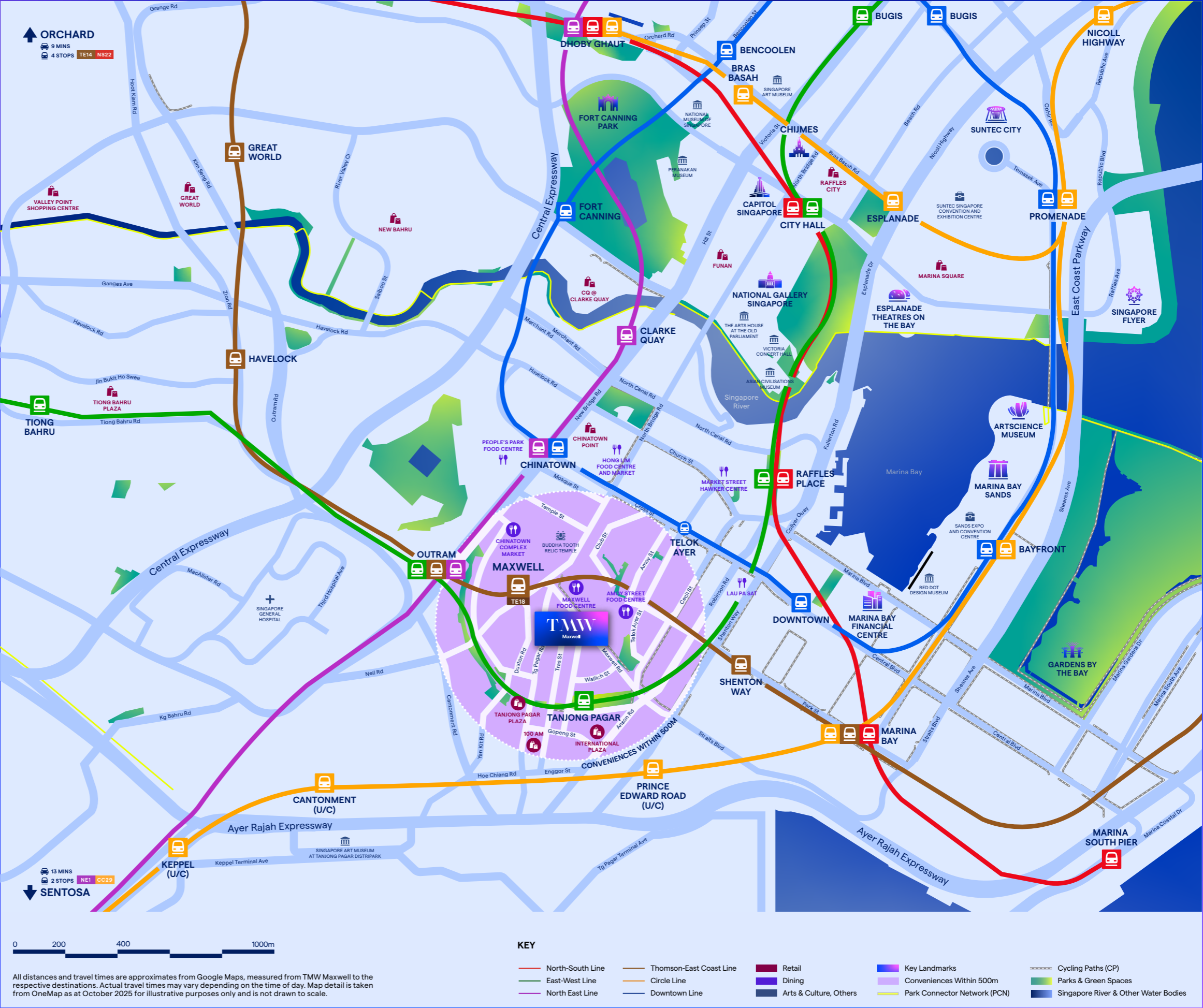
# AT THE HEART OF MULTIPLE ENCLAVES

CONNECTIVITY		
Maxwell MRT	TE18	2 mins
Tanjong Pagar MRT	EW15	4 mins
Telok Ayer MRT	DT18	9 mins
Chinatown MRT	NE4 DT19	10 mins
Outram MRT	EW16 NE3 TE17	10 mins
Shenton Way MRT	TE19	12 mins

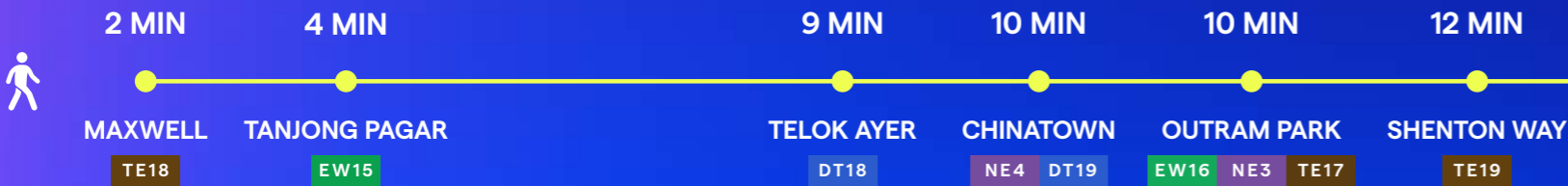
RETAIL		
Tanjong Pagar Plaza		6 mins
100 AM		8 mins
International Plaza		9 mins
Chinatown Point		13 mins
Great World		10 mins
Funan		11 mins
Marina Bay Sands		11 mins
Tiong Bahru Plaza		11 mins
Suntec City		11 mins

DINING		
Maxwell Food Centre		3 mins
Tanjong Pagar Food Centre		4 mins
Amoy Street Food Centre		9 mins
Hong Lim Food Centre and Market		13 mins
People's Park Food Centre		5 mins
Lau Pa Sat		7 mins
Market Street Hawker Centre		9 mins

ARTS & CULTURE		
Buddha Tooth Relic Temple		6 mins
Asian Civilisations Museum		6 mins
National Gallery Singapore		6 mins
National Museum of Singapore		7 mins
ArtScience Museum		8 mins
Esplanade - Theatres on the Bay		9 mins
Gardens by the Bay		9 mins
Victoria Concert Hall		12 mins
Fort Canning Park		13 mins



# 4 LINES, 5 PARKS, 6 MRT STATIONS ALL WITHIN YOUR DOORSTEP



\*Time indicated is based on estimate from Google Maps



# A PLACE OF MANY GREAT STREETS

With great streets all around, there is always an adventure waiting to be discovered around every corner. The whole hood really is your playground.



LAU PA SAT



CLUB STREET



CHINATOWN



KEONG SAIK ROAD



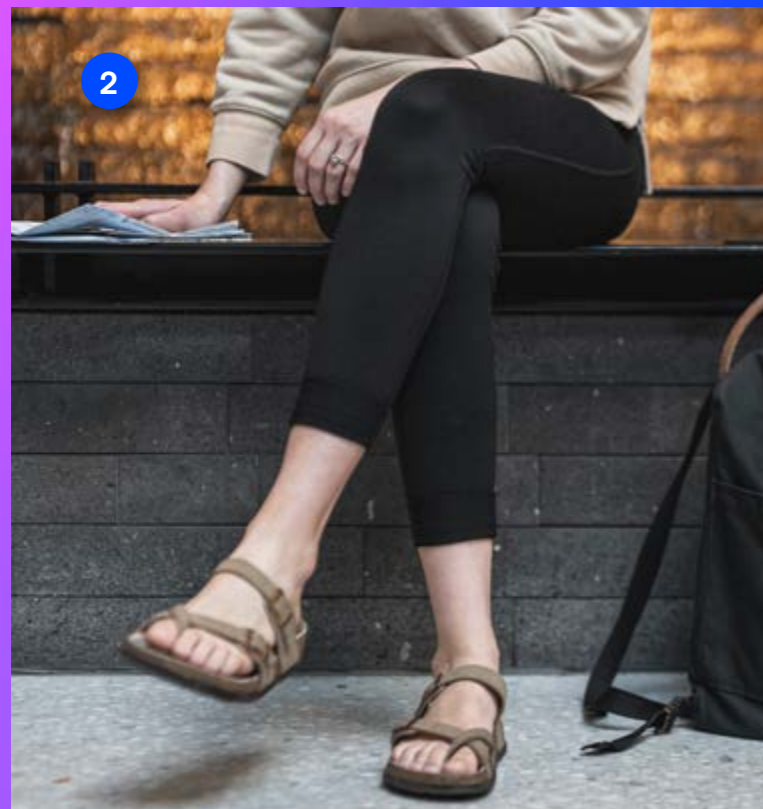
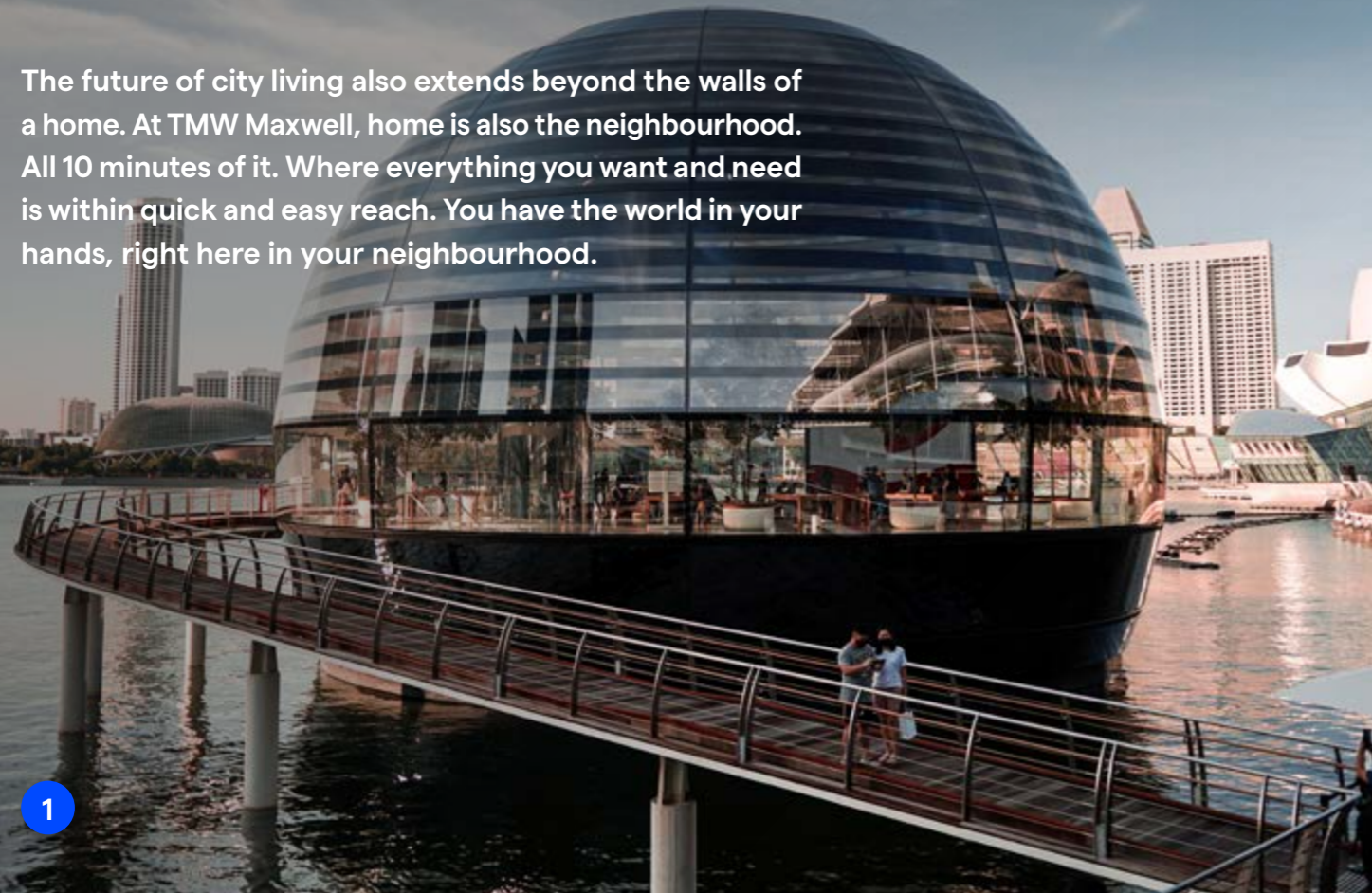
DUXTON ROAD

# GLOBAL



# LOCAL

The future of city living also extends beyond the walls of a home. At TMW Maxwell, home is also the neighbourhood. All 10 minutes of it. Where everything you want and need is within quick and easy reach. You have the world in your hands, right here in your neighbourhood.



- 1 Apple
- 2 Birkenstock
- 3 Gokoku Japanese Bakery



- 4 Littered With Books
- 5 The 1925 Brewing Co.
- 6 Darkness Dessert



Scan or click [here](#) to find out more about TMW Maxwell's collaboration with The 1925 Brewing Co.



# CULTURE

×

# COMMERCE

1

4

2

3

- 4 Marina Bay Financial Centre (MBFC)
- 5 Guoco Tower
- 6 Central Business District (CBD)

- 1 Lau Pa Sat
- 2 Buddha Tooth Relic Temple
- 3 ArtScience Museum

5

6

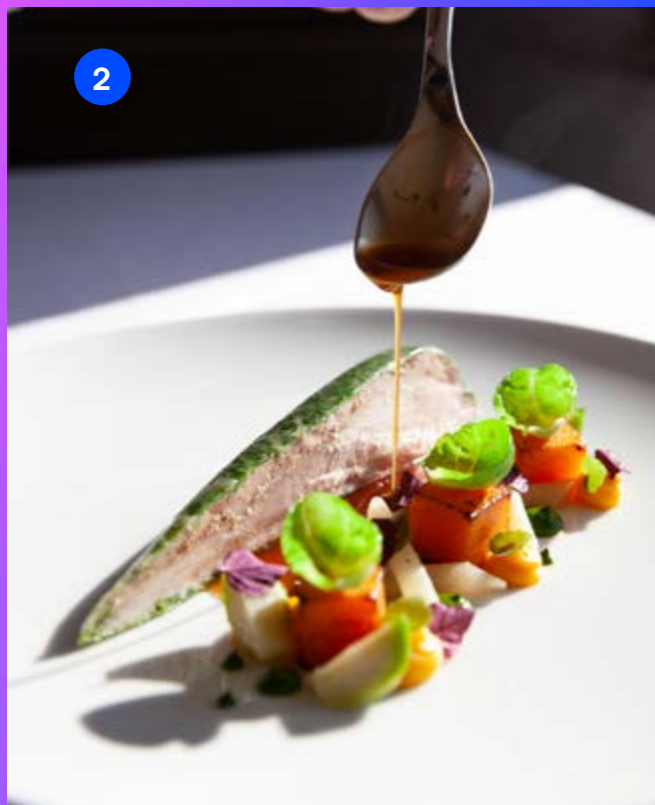


GOURMET

×



HAWKER



- 1 Rhubarb
- 2 Brasserie Gavroche
- 3 ANJU
- 4 Kada



- 5 Levant
- 6 Tanjong Pagar Plaza Market & Food Centre
- 7 Maxwell Food Centre
- 8 Market Street Hawker Centre

YTD IS HISTORY

TMW IS HERE



# CHANGE-MAKERS OF TMW

**FORMWERKZ  
ARCHITECTS**

ARCHITECT



Alan Tay Shiah Shih  
Seetoh Kum Loon  
Laurence Liew  
Cynthia Soon  
Chen Xuezheng  
Tan Xin Yuan  
Wang Hu  
Wu Zhiyang

**co<sup>2</sup>**  
compound collaborative

LANDSCAPE ARCHITECT



Ng Sze Oun  
Helen Low

**FARM**

CREATIVE & SALES GALLERY INTERIOR DESIGN



Selwyn Low  
Willie Koh  
Gareth Low  
Wenxin Oh  
Elwin Chan  
Limay Foo

Jou Wen Tan  
Rebekah Lee  
Darren Phua  
Joel Lee  
Yolande Leong

## A MULTI-HYPHENATE DEVELOPMENT BY



### FLOOR PLANS



### WEBSITE



Name of Developer: Maxwell Residential Pte. Ltd. (UEN: 202117625M) • Maxwell Commercial Pte. Ltd. (UEN: 202117620W) • Housing Developer's Licence No: C1452 • Tenure of Land: Remainder of leasehold estate of 99 years commencing on 28 Apr 2023 •  
Encumbrances on the Land: Mortgage(s) in favour of United Overseas Bank Limited • Expected Date of Vacant Possession: 30 June 2028 • Expected Date of Legal Completion: 30 June 2031 • Location: Lot No. 359C of Town Subdivision 3 at Tras Street, Singapore

While every reasonable care has been taken in preparing this brochure, the specifications and the attached plans, and in constructing the sales models and showflats, the Developer and its agents shall not be held responsible for any inaccuracies or omissions. All statements, specifications, information, depictions and plans in the brochure are believed to be accurate at the time of publication but shall not be regarded or relied upon as statements or representations of fact. All information, specifications and plans are subject to change/ amendments as may be required and/or approved by the Developer and/or the building authorities and other relevant authorities and do not form part of an offer or contract. Visual representations, illustrations, photographs, graphic representations, sales models, showflat displays, pictures and other art renderings are only artist's impressions of the development and are not to be regarded or relied upon as statements and representations of fact. Photographs for images contained in this brochure do not necessarily represent as built standard specifications. All areas are approximate measurements only and are subject to final survey. The property is subject to final inspection by the relevant authorities to comply with current codes of practice. The sale and purchase agreement shall form the entire agreement between the Developer and the purchaser and shall supersede all statements, representations or promises made prior to the signing of the sale and purchase agreement and shall in no way be modified by any such statements, representations or promises made.

DEFIANCE \ NON-CONFORMIST \ QUESTIONING THE  
FUTURE \ MULTI-HYPHENATES \ HYPER-CONNECTED \ NOT  
DEFINED BY ONE THING \ AMBITION \ DO-MORE, DO-ALL \ BE  
YOURSELF \ MAKING YOUR OWN HISTORY \ SHAPING YOUR  
OWN TOMORROW \ STAY TRUE \ BREAK BOUNDARIES \ THE  
ART OF BEING UNIQUE \ DEFIANCE \ NON-CONFORMIST \  
QUESTIONING THE FUTURE \ MULTI-HYPHENATES \ HYPER-  
CONNECTED \ NOT DEFINED BY ONE THING \ AMBITION \  
DO-MORE, DO-ALL \ BE YOURSELF \ MAKING YOUR OWN  
HISTORY \ SHAPING YOUR OWN TOMORROW \ STAY  
TRUE \ BREAK BOUNDARIES \ THE ART OF BEING UNIQUE  
\ DEFIANCE \ NON-CONFORMIST \ QUESTIONING THE  
FUTURE \ MULTI-HYPHENATES \ HYPER-CONNECTED \ NOT  
DEFINED BY ONE THING \ AMBITION \ DO-MORE, DO-ALL \ BE  
YOURSELF \ MAKING YOUR OWN HISTORY \ SHAPING YOUR  
OWN TOMORROW \ STAY TRUE \ BREAK BOUNDARIES \ THE  
ART OF BEING UNIQUE \ DEFIANCE \ NON-CONFORMIST \  
QUESTIONING THE FUTURE \ MULTI-HYPHENATES \ HYPER-  
CONNECTED \ NOT DEFINED BY ONE THING \ AMBITION \  
DO-MORE, DO-ALL \ BE YOURSELF \ MAKING YOUR OWN  
HISTORY \ SHAPING YOUR OWN TOMORROW \ STAY  
TRUE \ BREAK BOUNDARIES \ THE ART OF BEING UNIQUE  
\ DEFIANCE \ NON-CONFORMIST \ QUESTIONING THE  
FUTURE \ MULTI-HYPHENATES \ HYPER-CONNECTED \  
NOT DEFINED BY ONE THING \ AMBITION \ DO-MORE,  
DO-ALL \ BE YOURSELF \ MAKING YOUR OWN HISTORY \  
SHAPING YOUR OWN TOMORROW \ STAY TRUE \ BREAK  
BOUNDARIES \ THE ART OF BEING UNIQUE \ DEFIANCE \  
NON-CONFORMIST \ QUESTIONING THE FUTURE \ MULTI-  
HYPHENATES \ HYPER-CONNECTED \ NOT DEFINED BY ONE  
THING \ AMBITION \ DO-MORE, DO-ALL \ BE YOURSELF  
\ MAKING YOUR OWN HISTORY \ SHAPING YOUR OWN  
TOMORROW \ STAY TRUE \ BREAK BOUNDARIES \ THE  
ART OF BEING UNIQUE \ DEFIANCE \ NON-CONFORMIST \  
QUESTIONING THE FUTURE \ MULTI-HYPHENATES \ HYPER-  
CONNECTED \ NOT DEFINED BY ONE THING \ AMBITION \  
DO-MORE, DO-ALL \ BE YOURSELF \ MAKING YOUR OWN  
HISTORY \ SHAPING YOUR OWN TOMORROW \ STAY TRUE