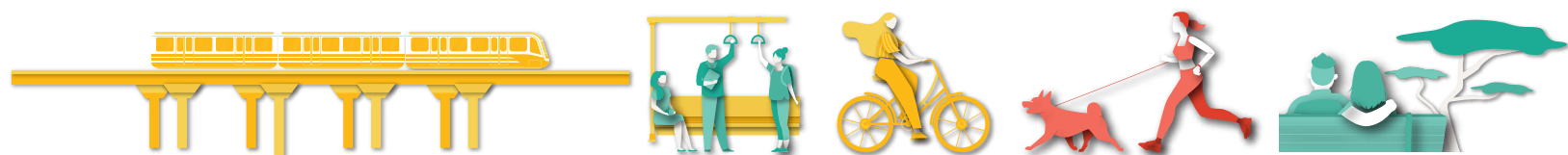


LIVISTA

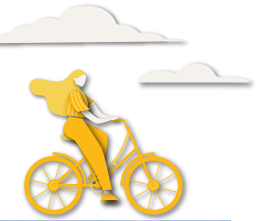
BANDAR SRI DAMANSARA

LIVE CONNECTED • LIVE GOOD • LIVE SERENE • LIVE VIBRANT



LIVE BEAUTIFUL

A MODERN HUB
OF ACTIVITY AND VARIETY



500meter To Sri Damansara West Station



Exciting F&B hotspot



Township for the Next Generation



Pedestrian & covered walkway to Sri Damansara West MRT Station

Artist's Impression



5.21 acres of lifestyle park

Artist's Impression



LIVE GOOD

HOME TO ELEVATE YOUR LIFESTYLE FROM NATURE
TO LEISURE




RELAX
CAMPING BY THE SKY



GREETINGS FROM
3 STOREY HEIGHTS WATER
CASCADE, EVERYDAY



SWEAT

SWIM LIKE A CHAMPION
DIVE INTO 50METER LAP POOL



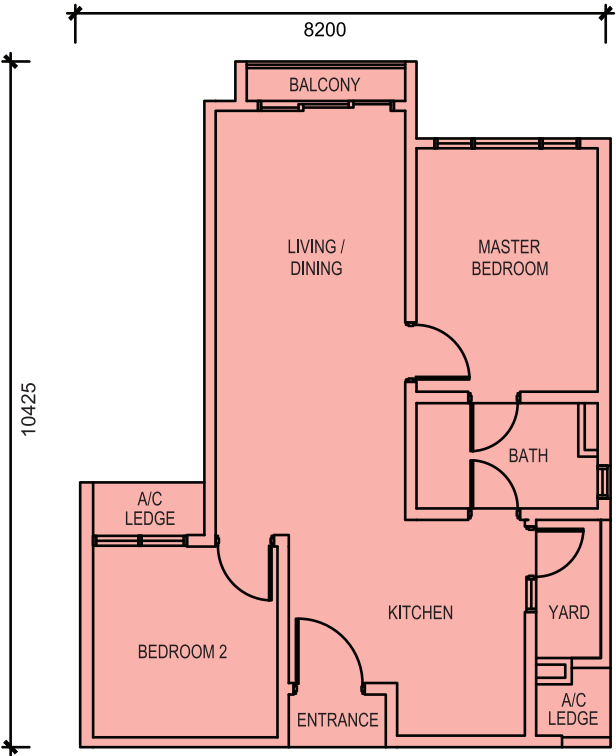
PLAY

NEVER MISS YOUR
PRECIOUS BONDING
TIME TOGETHER

ELEGANT COMFORT IN EVERY CORNER

TYPE A

| 690 sf
| 2 Bedrooms
| 1 Bath

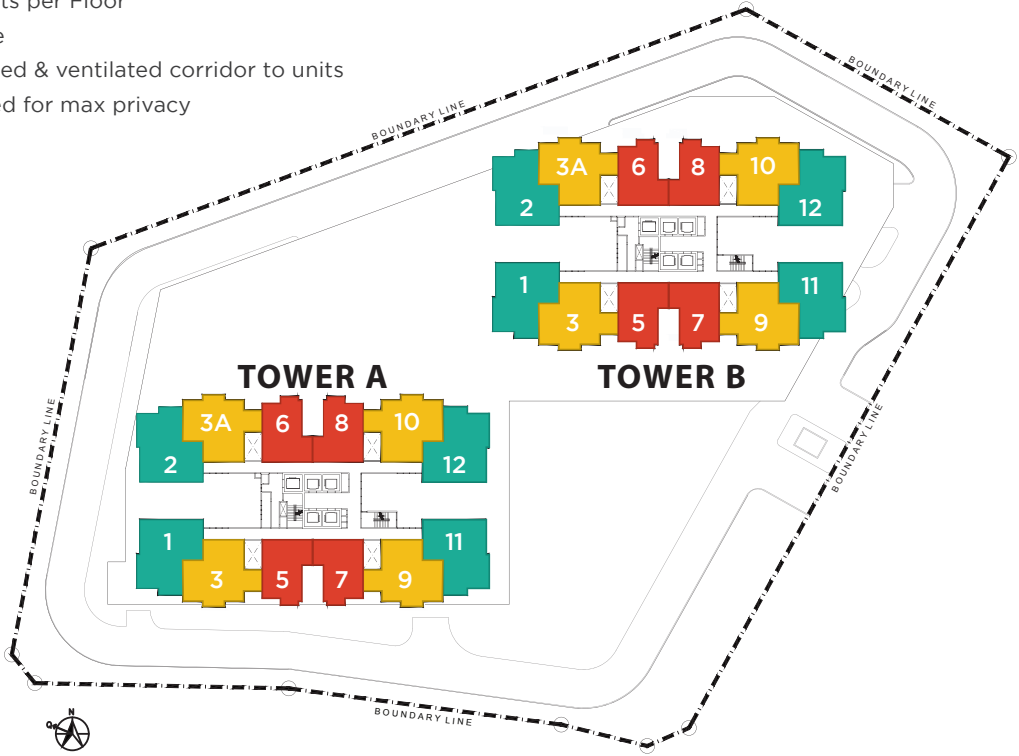


WELL DESIGNED
I - FIN ELEMENT

The floor layout are intentionally designed in “ I ” fin element to promote natural air cross ventilation, at the same time, it invites general amounts of natural light, subsequently helping minimize the usage of energy.

- Units designed for maximum natural lights & ventilation
- Low density at only 8 – 12 Units per Floor
- 4 + 1 lifts shorten waiting time
- Comfortable spaces well lighted & ventilated corridor to units
- Lift Lobby & Corridor designed for max privacy

- Type A : 690 Sq.ft
- Type B1 : 1012 Sq.ft
- Type B2 : 1035 Sq.ft



SPECIFICATIONS

STRUCTURE
Reinforced concrete

WALL
Brick wall / Reinforced concrete

ROOFING COVERING
Reinforced concrete

CEILING
Skim coat and paint
Plaster board and paint (where applicable)

WINDOW
Aluminium framed with glass

DOOR
Fire door for main entrance
Timber flush door for all bedrooms, all bathroom and yard
Aluminium framed sliding glass door for balcony

IRONMONGERIES
Quality locksets and handle

WALL FINISHES
Tiles to kitchen & bathroom
Paint to living, dining, all bedrooms, general

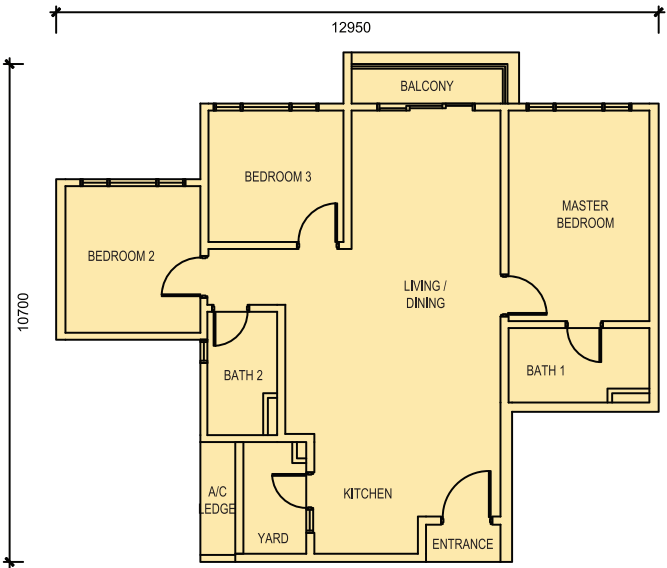
FLOOR FINISHES
Laminated timber flooring to all bedrooms and living / dining (Type A)
Tiles to all bathrooms
Tiles to living / dining (Type B1 & B2), kitchen, foyer, balcony, yard and general

SANITARY & PLUMBING FITTING			
Type	A	B1	B2
Shower Point	1	2	2
Water Closet (WC)	1	2	2
Wash Basin & Tap	1	2	2
Kitchen Sink	1	1	1

ELECTRICAL INSTALLATION			
Type	A	B1	B2
Lighting Point	13	17	18
Ceiling Fan Point	4	5	5
13A Switch Socket Outlet	12	12	14
15A Switch Socket Outlet	1	1	1
Air Conditioning Point	3	4	4
Water Heater Point	1	2	2
SMTV / TV Point	1	2	2
Door Bell Point	1	1	1
Telephone Point	1	1	1
Electrical Distribution Box	1	1	1

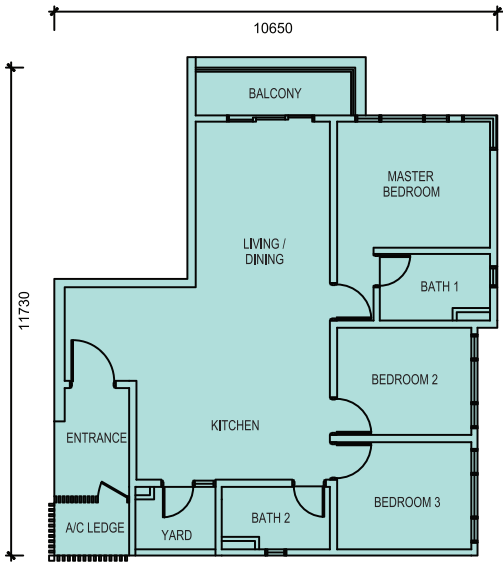
TYPE B1

| 1012 sf
| 3 Bedrooms
| 2 Baths



TYPE B2

| 1035 sf
| 3 Bedrooms
| 2 Baths



DISCOVER BANDAR SRI DAMANSARA



SHOPPING MALLS

The FLO Alfresco Street	50 m
Star Grocer Supermarket	50 m
8trium	300 m
Decathlon / Courts Mammoth	300 m
Uniqlo Sri Damansara	1 km
Lotus Menjalara	5.2 km
Plaza Arkadia	5.6 km
Aeon Mall Metro Prima	6 km
The Curve Shopping Mall	7.1 km
IKEA	7.2 km
1 Utama Shopping Centre	8.4 km



EDUCATION

Sri Bestari International School	600 m
Sri Bestari Private School	600 m
SK Bandar Sri Damansara 2	850 m
SK Bandar Sri Damansara 1	1 km
SMK Bandar Sri Damansara 2	1.2 km
SK Bandar Sri Damansara 3	1.8 km
SMK Bandar Sri Damansara 1	2 km
SJK (C) Desa Jaya 2	2 km
IGB International School	4.6 km
The International School @ Park City	5.4 km
ELC International School	5.6 km
First City University College	11.3 km



HOSPITALS & MEDICAL CENTRES

Parkcity Medical Centre	5.9 km
Damansara Specialist Hospital 2	6 km
Damansara Damai Medical Centre	6 km
Sungai Buloh Hospital	7.2 km
Selayang Hospital	8.8 km
KPJ Damansara Specialist Hospital	10.1 km
Tropicana Medical Centre	13.1 km



PUBLIC TRANSPORTATION

Sri Damansara West MRT Station	500 m
Sri Damansara Sentral MRT Station	3 km
Sri Damansara East MRT Station	4 km
Kepong Sentral KTM Commuter Station	4 km
Damansara Damai MRT Station	7 km



KTM



MRT



MRT Line 2

----- Cover walkway with connection of Pedestrian Link



www.land-general.com

Developed By:

SRI DAMANSARA SDN BHD (110516-H)

A Subsidiary Of Land & General Berhad.

8trium, Level 18, Menara 1, Jalan Cempaka Sd 12/5,
Bandar Sri Damansara, 52200 Kuala Lumpur.

TEL: +603-62798000 **FAX:** +603 6279 8022



Get in touch with us to get more information

03-6419 9858

www.livista.com.my



**LIVISTA
SALES GALLERY**

THE FLO, Jalan Persiaran Perdana,
Bandar Sri Damansara, 52200
Kuala Lumpur, Malaysia.