



THE ADAMANTIA

BY AIYADA ASSET



Featuring an outdoor swimming pool, a garden, and a terrace, The Adamantia - Luxury pool villa surrounded by nature provides accommodations in Thalang ,Phuket. This property offers a private pool and private parking.

There are 2 villa types with distinctive spaces and styles 4-5 bedrooms.

This is a four-bedroom villa surrounded by a verdant garden. The living area, dining room, and all bedrooms are connected with a view of the swimming pool. The rooftop garden is parallel to the building that provides cozy shade and lighting inside the house for different moods during night and day.

SERVICES & FACILITIES

- 24 hrs-CCTV (security cameras)
- Pet-friendly outdoor area
- Multifunction room
- Rooftop farm & garden



THE ADAMANTIA
BY AIYADA ASSET



THE ADAMANTIA LUXURY POOL VILLA

Email: info@aiyadaasset.com

+66(0) 63 164 9979

www.aiyadaasset.com



THE ADAMANTIA
BY AIYADA ASSET



THE ADAMANTIA LUXURY POOL VILLA

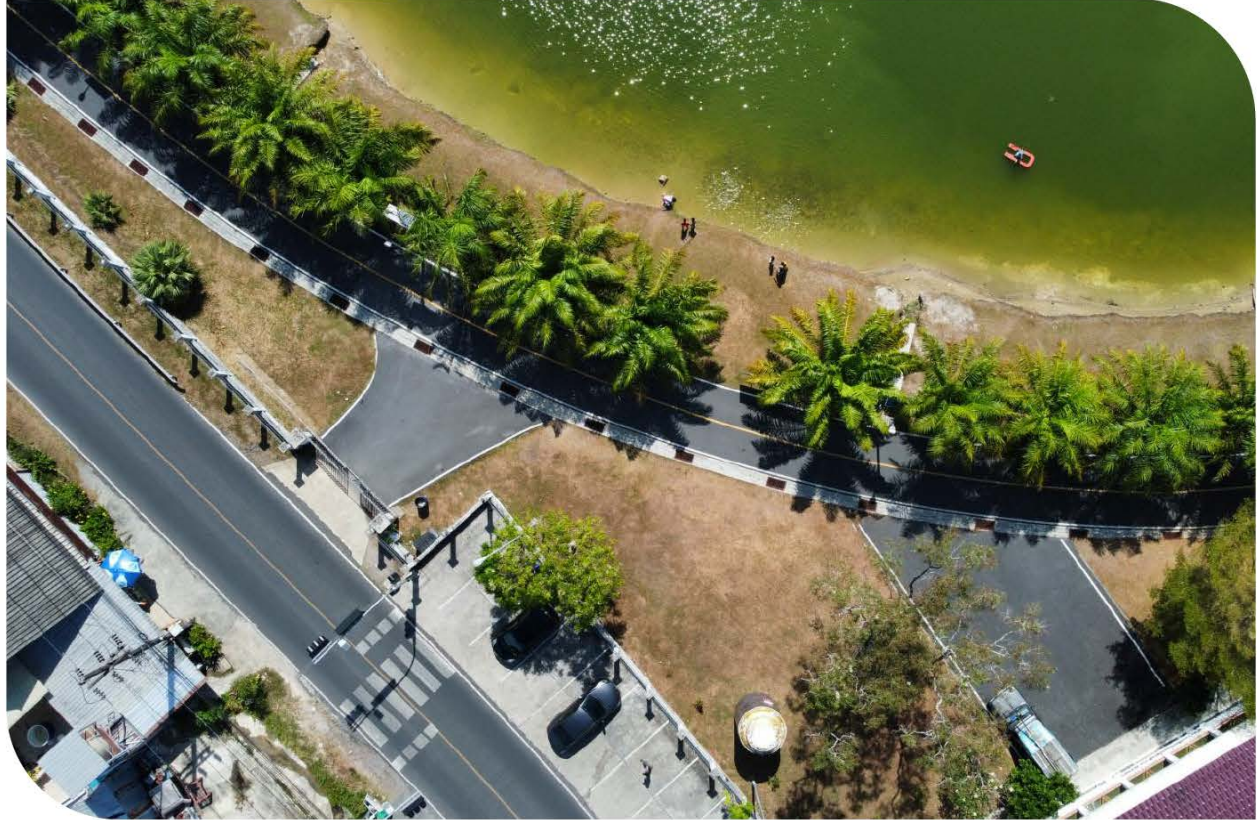


THE ADAMANTIA LUXURY POOL VILLA

Avoiding the chaos, toxic and bad energy. A clean and uncontaminated environment for you to breathe in wholeheartedly whilst consistently with a great environment with fresh air all year round .



THE ADAMANTIA
BY AIYADA ASSET



THE ADAMANTIA LUXURY POOL VILLA

A luxurious pool villa set in a peaceful location blended perfectly in nature. Close to Layan Beach in 15 minutes.



THE ADAMANTIA
BY AIYADA ASSET



THE ADAMANTIA LUXURY POOL VILLA

Location



NEARBY ATTRACTIONS



PORTO DE PHUKET



ROBINSON DEPARTMENT STORE-THALANG



KAJONKIET INTERNATIONAL SCHOOL



LAYAN BEACH



PHUKET INTERNATIONAL AIRPORT



BOAT AVENUE MODERN STREET MALL



THE ADAMANTIA
BY AIYADA ASSET

MASTER PLAN

Adamantia Luxury Villas

TYPE A

TYPE B



TYPE: A

Modern Luxury Style



THE ADAMANTIA
BY AIYADA ASSET



TYPE: A

Plot Size: 515.21 SQ.M.
Internal Area: 237.03 SQ.M.

External Area: 179.48 SQ.M.
Garden Area : 98.70 SQ.M.



TYPE: B

Modern Luxury Style



TYPE: B



THE ADAMANTIA
BY AIYADA ASSET

Plot Size: 502.27 SQ.M.
Internal Area: 229.10 SQ.M.

External Area: 173.72 SQ.M.
Garden Area : 99.45 SQ.M.

