



GLOMAC
Centro

HIP & HAPPENING BUSINESS HUB

IN THE HEART OF PJ-DAMANSARA



PRACTICAL LAYOUT

- Flexible & functional layout
- Practical design with boulevard walkway



COMPLETED & READY FOR TENANTS

- Immediate residential population from serviced apartments
- Booming surrounding neighbourhood



STRATEGIC LOCATION

- In the vicinity of Bandar Utama & Damansara Jaya
- Connected via major highways such as SPRINT, NKVE & LOP

Strata Units For Sale:
Shoplot | Offices
1,286 sqft | 1,638 sqft

For more information, call:

03 2727 7552

or visit www.glomac.com.my

Sales Gallery Opens

Friday - Saturday | 10am - 7pm

Sunday - Thursday | 10am - 6pm

GLOMAC KRISTAL SDN BHD 791194-H

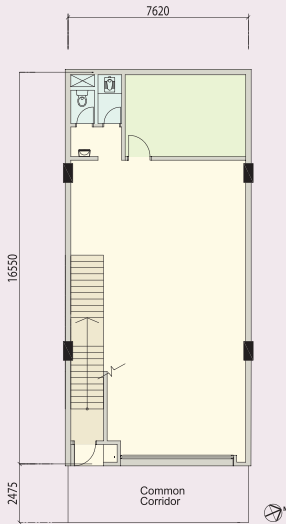
Level 1, Menara Glomac, Glomac Damansara,

Jalan Damansara, 60000 Kuala Lumpur, Malaysia

W www.glomac.com.my

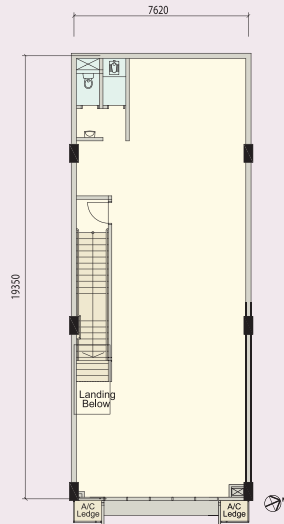
2-STOREY SHOP-OFFICES FLOOR PLANS*

GROUND FLOOR



INTERMEDIATE TYPICAL LOT
119.42 sq.m. / 1,285.47 sq.ft.

FIRST FLOOR



INTERMEDIATE TYPICAL LOT
152.17 sq.m. / 1,637.99 sq.ft.

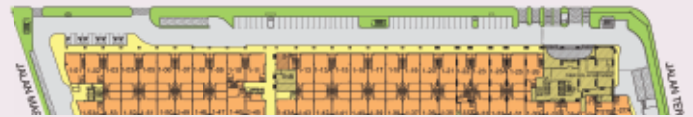
BUILDING SPECIFICATIONS**

STRUCTURE	Reinforced Concrete Structure Frame
BRICK	Masonry Bricks
ROOF	Reinforced Concrete Slab and / or Metal Roofing Sheet
CEILING	Shop - Skim Coat & Paint to RC Soffit and Suspended Ceiling where required
WINDOWS	Not Available
DOORS	Roller Shutter to Shop
IRONMONGERY	Generally Quality Lock Set
FLOOR FINISHES	Shop - Cement Render Basin area - Porcelain Tiles
WALL FINISHES	Shop - Plaster and Paint Basin area - Ceramic Tiles 7ft high
SANITARY FINISHES	Basin - 1 Nos

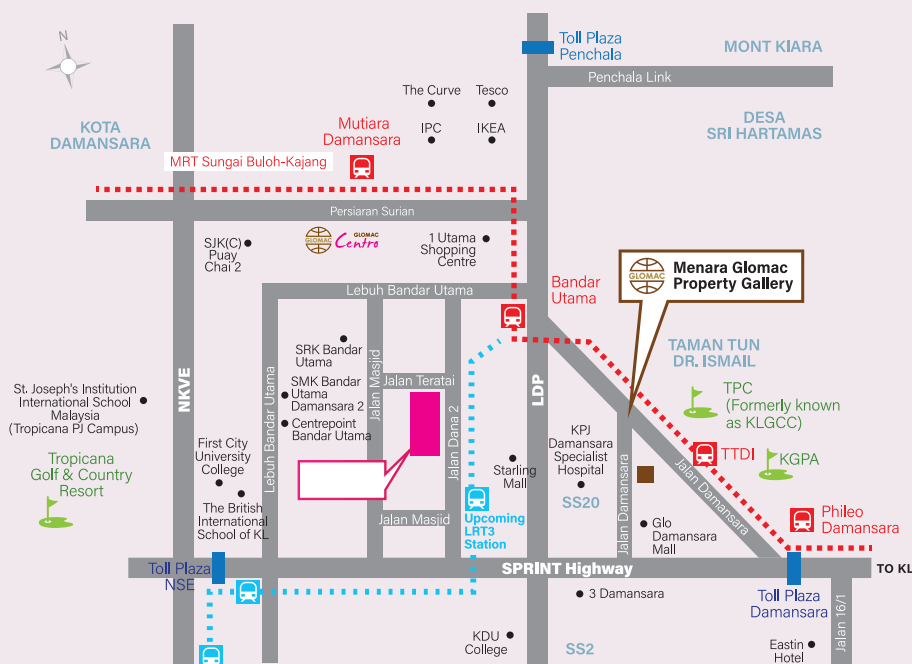
M&E INSTALLATIONS	Shop
Lightning Point	3
13A Power Point	2
A/C Point	1
Telephone Fiber Wall Socket	1
30A SPN DB	1

**Please note that the above specifications only apply to each floor unit respectively.

LAYOUT PLAN



PRIME PJ - DAMANSARA VALUABLE LOCATION



APPROXIMATE DISTANCE FROM GLOMAC CENTRO TO:

- SPRINT Highway 5 km
- NKVE 10 km
- Penchala Link 15 km
- Federal Highway 20 km
- Kerinchi Link 20 km