

SURFHOUSE

PHUKET BANG TAO





Island state of mind.

SURFHOUSE is a boutique low-rise condominium that epitomizes the essence of coastal living, offering residents a serene retreat where design and nature converge in harmony. Conveniently situated in an upscale resort area near the renowned Bang Tao Beach, its address is one of the most sought-after in Phuket. Welcome to your perfected island life.



Developer

Established in 2004, SALA is a renowned homegrown hospitality group that oversees the development and operation of nine luxury resorts and boutiques across Thailand, including the Six Senses resort and spa in Koh Samui. Garnering numerous prestigious accolades, such as The Best Hotel in the World awarded by Condé Nast Traveler Readers' Award and a Gold Medal in Architectural Design from the Association of Siamese Architects under Royal Patronage, SALA stands as a beacon of excellence in the hospitality industry.



The heart of Phuket's lifestyle scene

Welcome to Bang Tao, a prime destination where island living merges effortlessly with authentic Thai charm and leisure, offering a vibrant and popular locale.

With upscale boutiques, gourmet dining, rejuvenating spas, and thrilling entertainment, there's something for everyone, whether you're a fashionista, foodie, or wellness enthusiast.

Come experience the vibrant pulse of Phuket, where every moment holds the promise of unforgettable experiences.

Discover the pulse of Bangtao, Phuket

Entertainment & Shopping

1. Porto De Phuket Lifestyle Mall
2. Tops Supermarket
3. Boat Avenue Bar and Restaurant district
4. Laguna Hotels and Restaurants district
5. Catch Beach Club

Health

6. Thanyapura Wellness Centre
7. Thanyapura Medical Center
8. Cherrntalay - Sainamyen International Clinic

Nature & Surfing

9. Kamala Beach
10. Bang Tao Beach
11. Layan Beach
12. Naithon Beach
13. Mai Khao Beach

Infrastructure

14. Phuket International Airport

Activities

15. Laguna Golf Course
16. Blue Tree Waterpark and Entertainment
17. Phuket Nature Elephant Reserve
18. Thanyapura Health Club and Resort

Education

19. UWC Phuket
20. HeadStart International School, Phuket Cherrngtalay Campus





Eight floors of simply spectacular.

LAND AREA

1-0-39.3 RAIS

1,757 SQM

1 Building
7-Storey and Basement
34 Units
41 Parking Spaces
Cars & Motorbikes
Swimming Pool and Gym

1 Bedroom
60 sqm to 70 sqm

2 Bedroom
77 sqm to 139 sqm

3 Bedroom
139 sqm to 172 sqm





Services

Property Rental Management | Lifestyle Concierge | Housekeeping, Laundry & Dry Cleaning Services | Maintenance | Public Area Cleaning & Gardening | 24-Hour Security | Grocery, Food Delivery and Catering Services | Surf Classes, Board Storage and Transportation | Interior Design



Exclusive Benefits

Embrace unparalleled luxury with exclusive benefits at SALA Hospitality Group. Enjoy preferential hotel stays, dining credits, and complimentary upgrades for a truly refined experience. At SALA Phuket Mai Khao Beach Resort, wine and dine by the beach, rejuvenate at the spa at exclusive rates, and access exceptional facilities.













Artist's Impression















































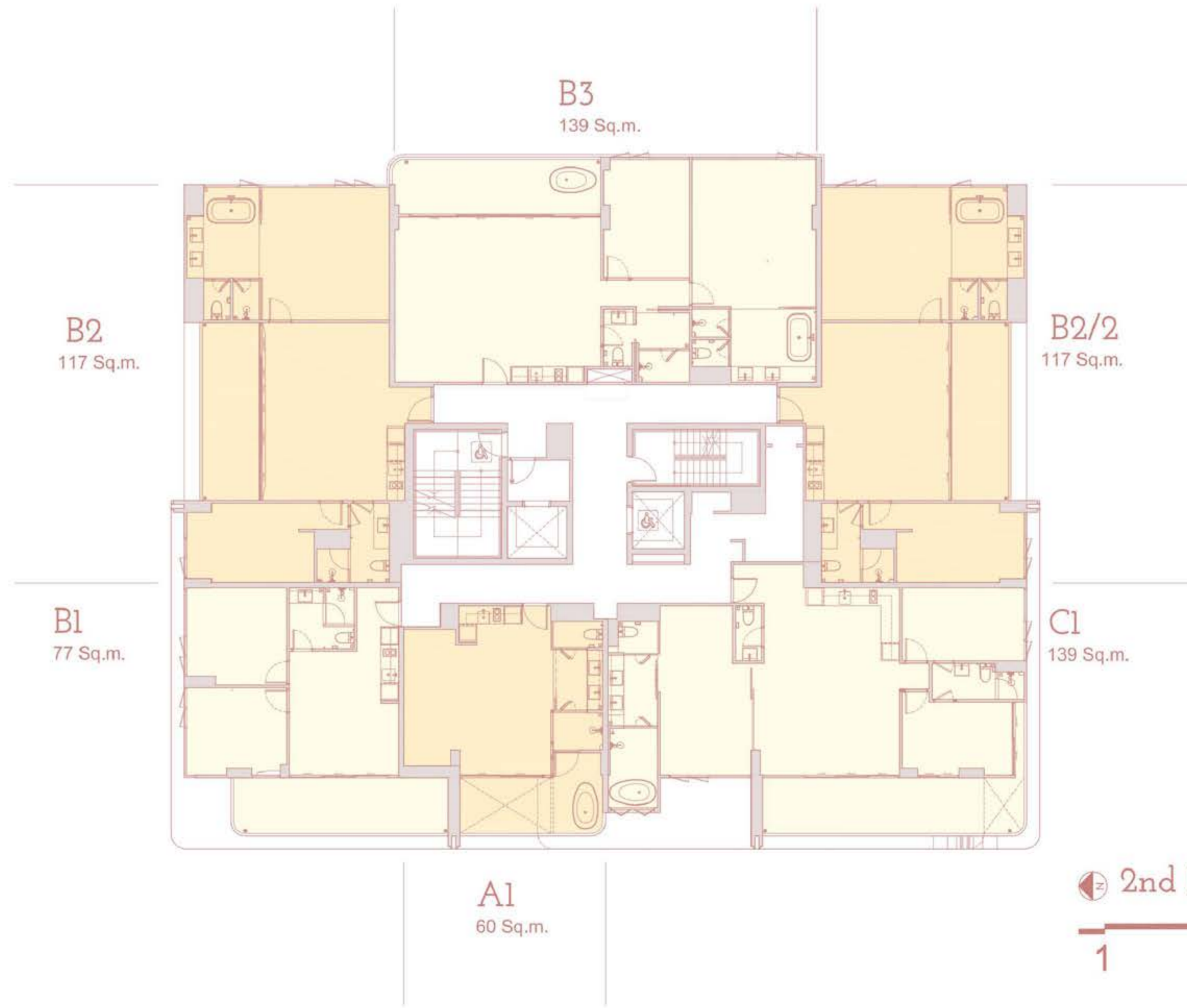
KHOK TANOT 3

1st Floor Plan
1 5 10

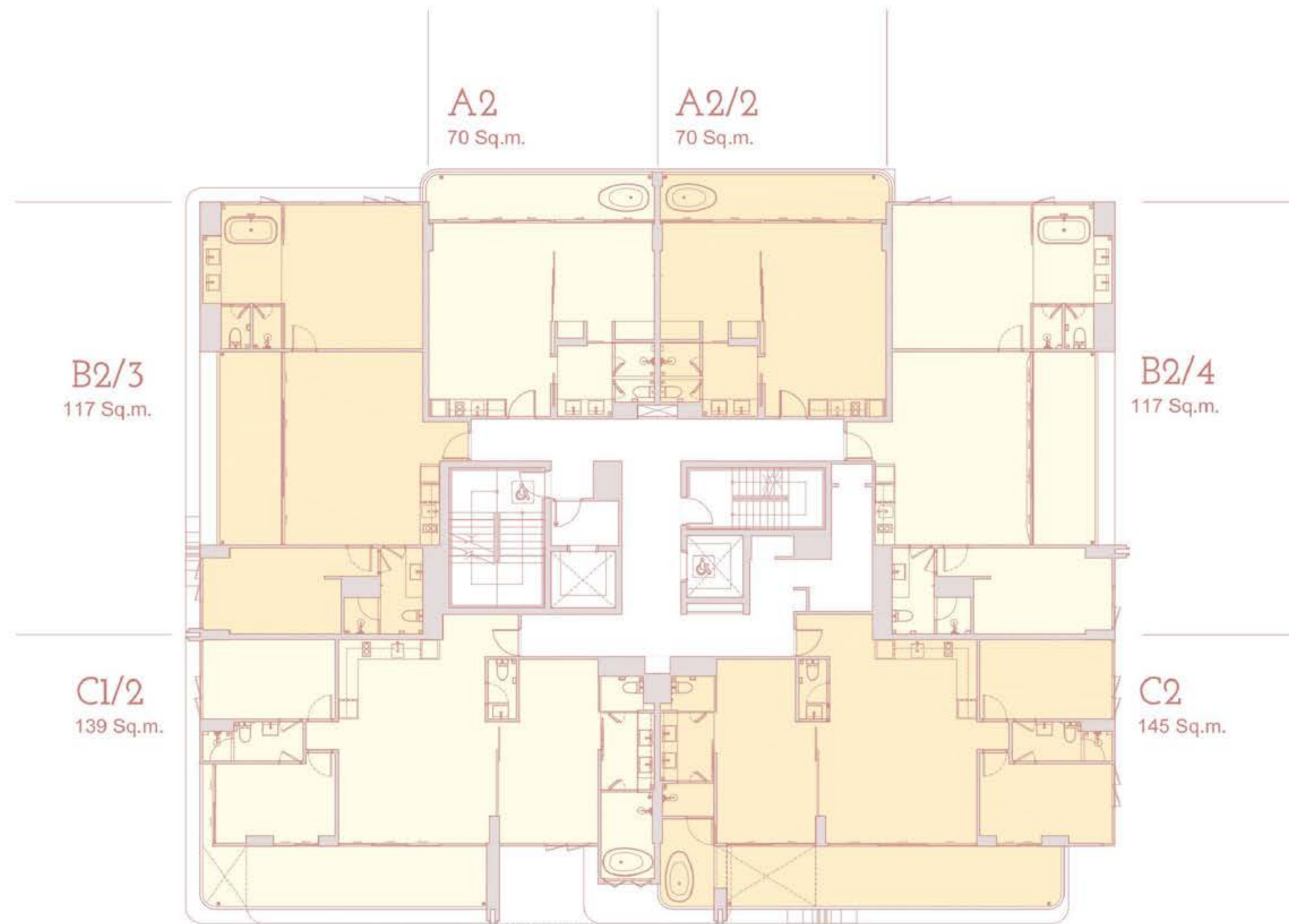


Basement Plan





2nd Floor Plan
1 5 10



A2
70 Sq.m.

A2/2
70 Sq.m.

B2/3
117 Sq.m.

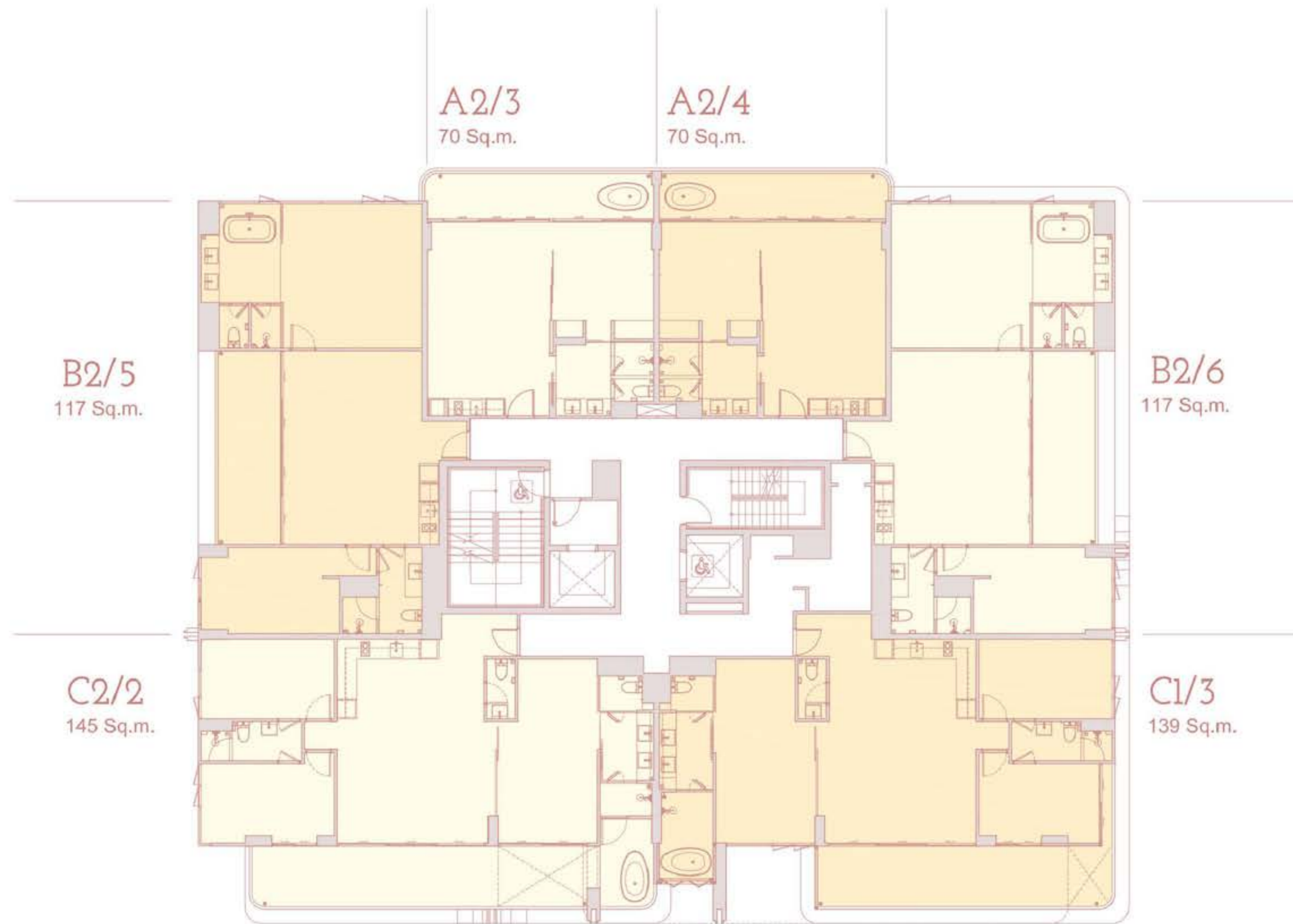
B2/4
117 Sq.m.

C1/2
139 Sq.m.

C2
145 Sq.m.

3rd Floor Plan





A2/3
70 Sq.m.

A2/4
70 Sq.m.

B2/5
117 Sq.m.

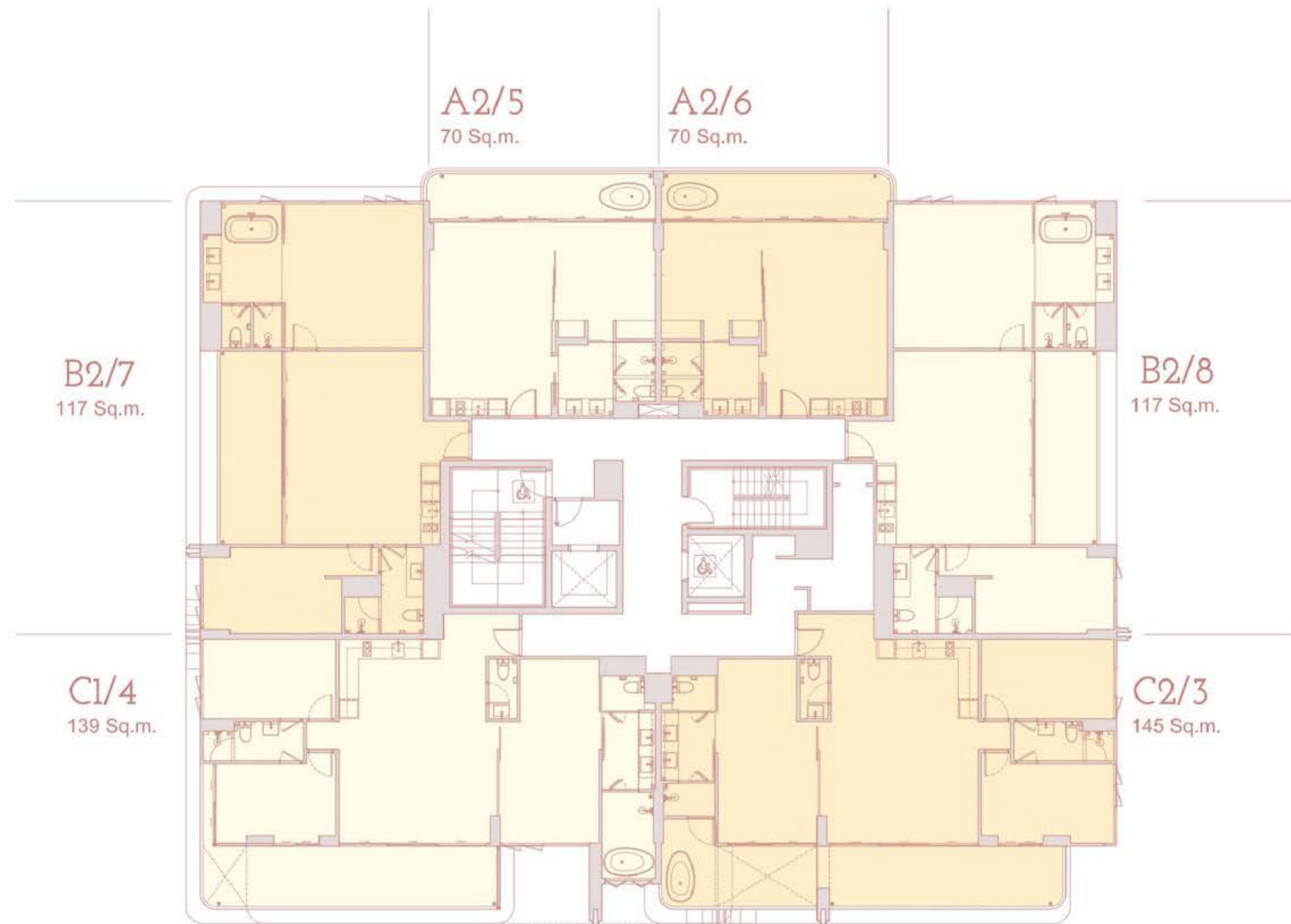
B2/6
117 Sq.m.

C2/2
145 Sq.m.

C1/3
139 Sq.m.

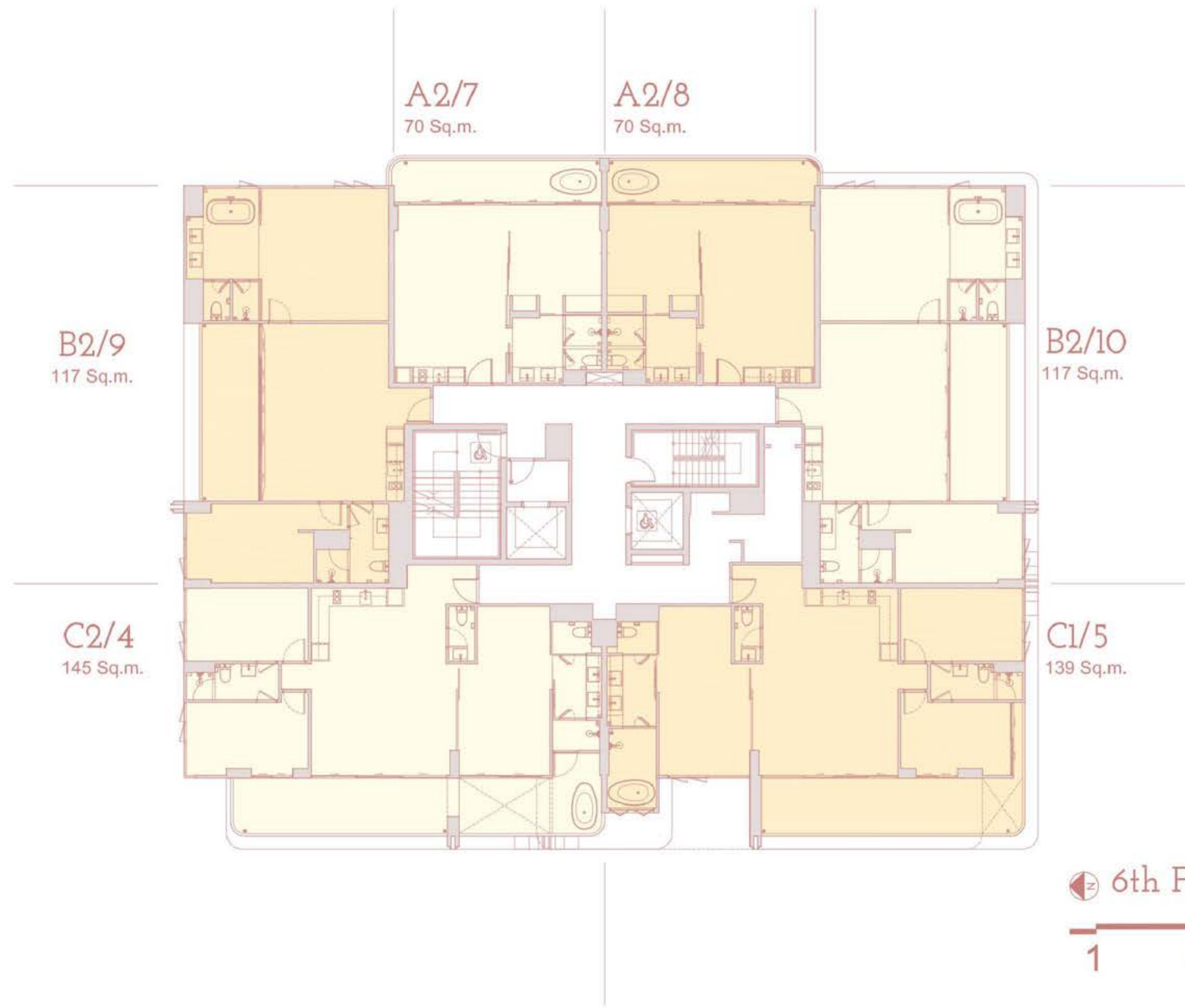
4th Floor Plan

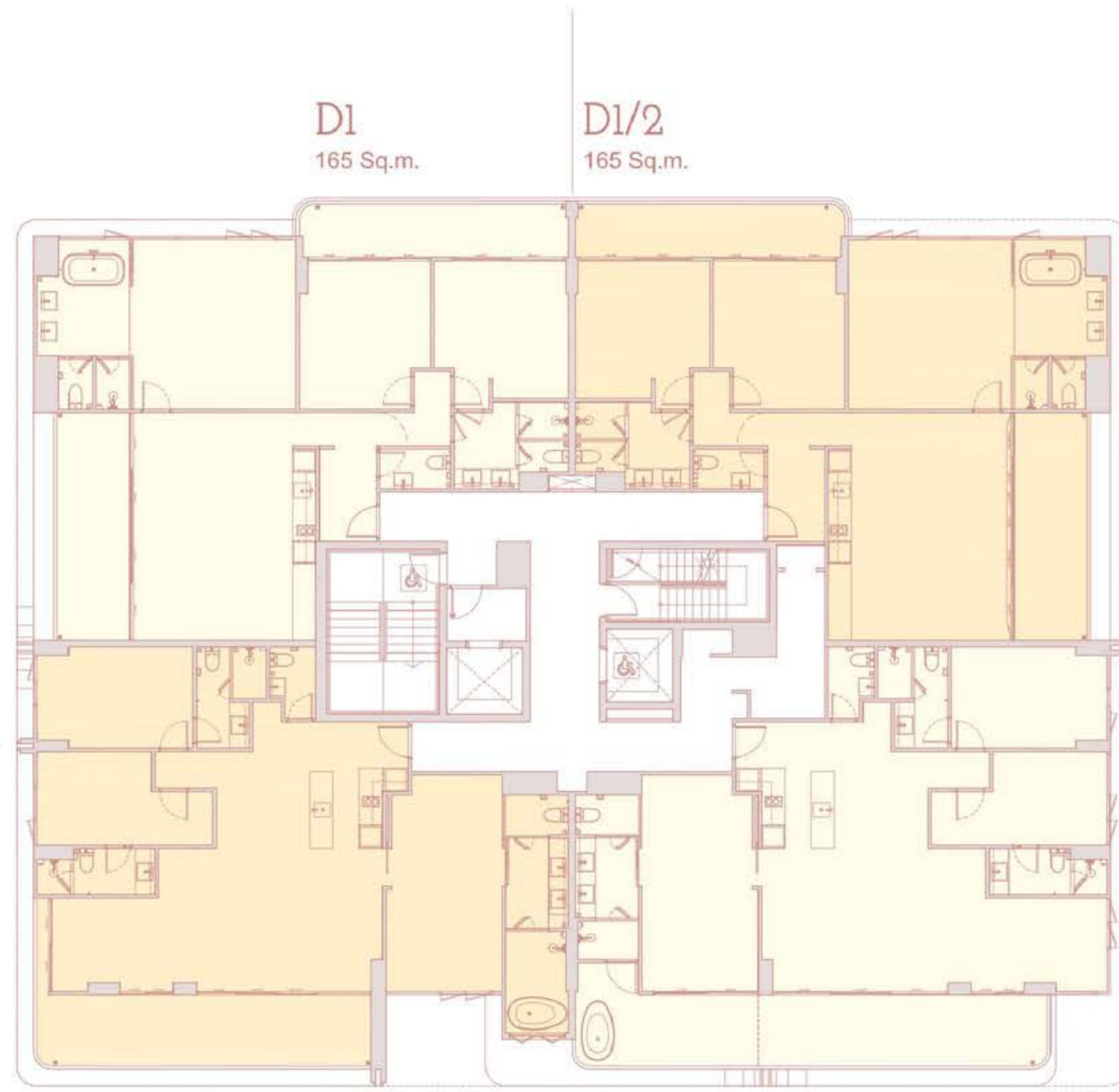




5th Floor Plan







D1
165 Sq.m.

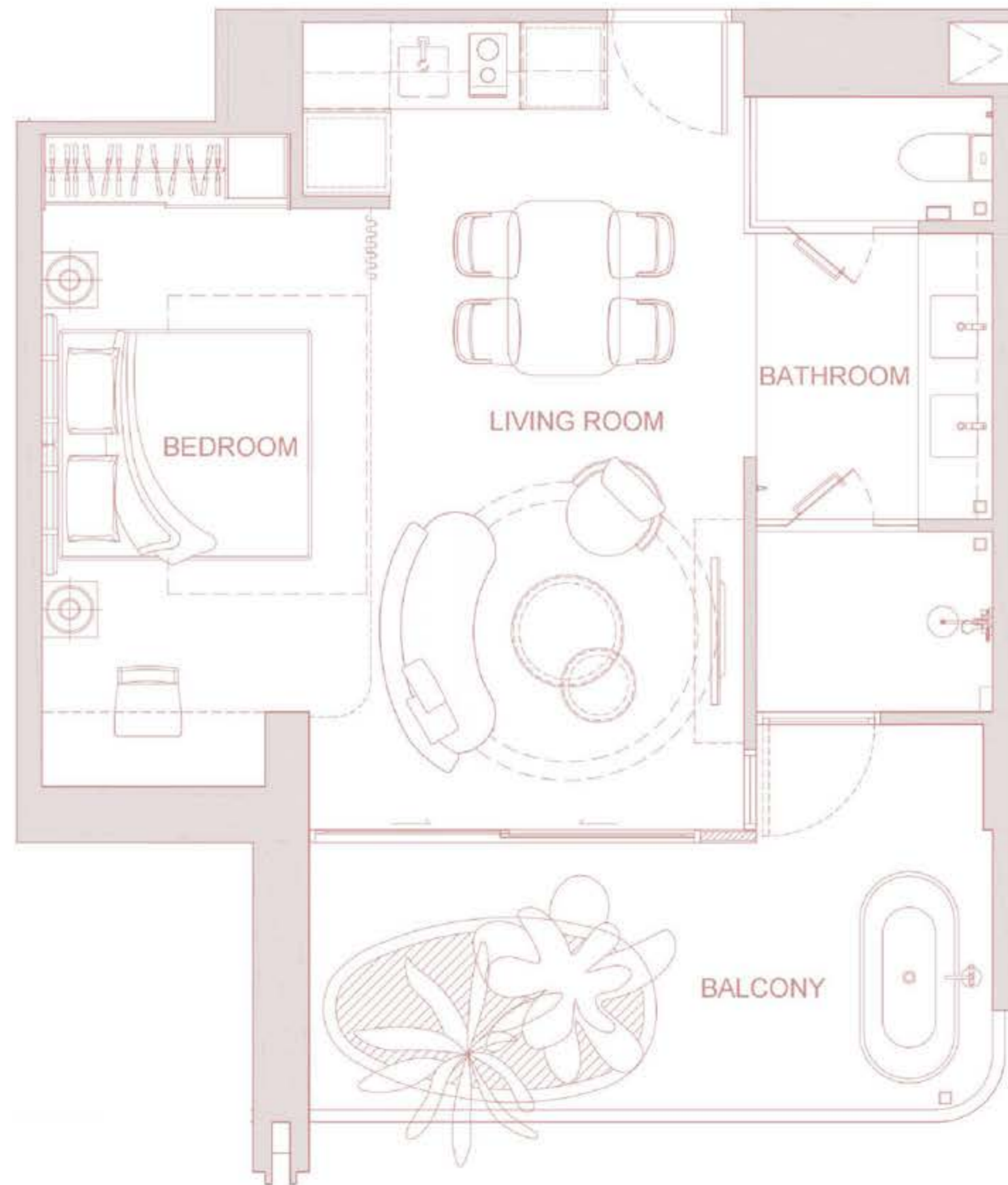
D1/2
165 Sq.m.

D2
166 Sq.m.

D3
172 Sq.m.

7th Floor Plan

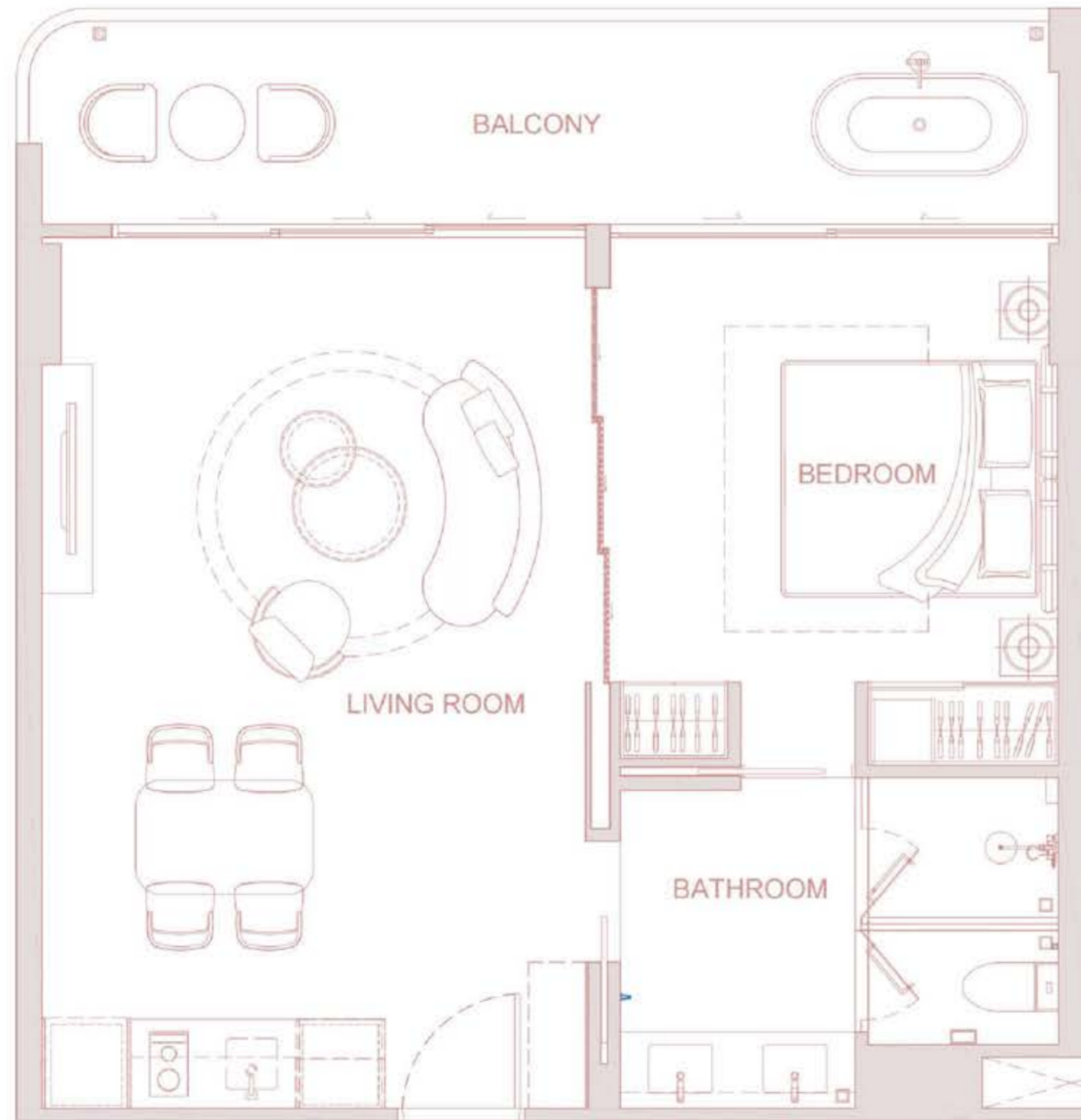




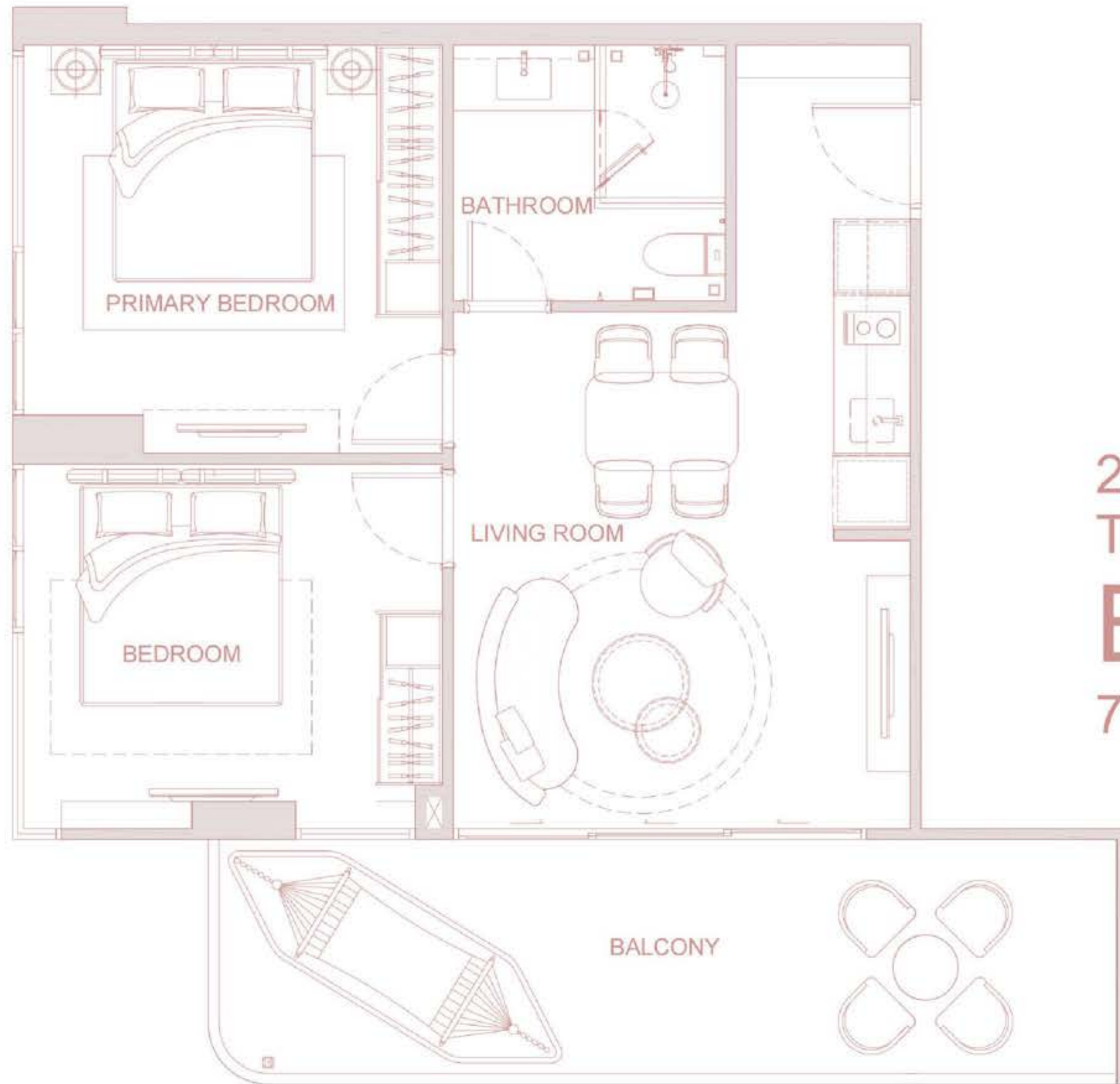
1 BEDROOM
TYPE

A1

60 SQ.M.



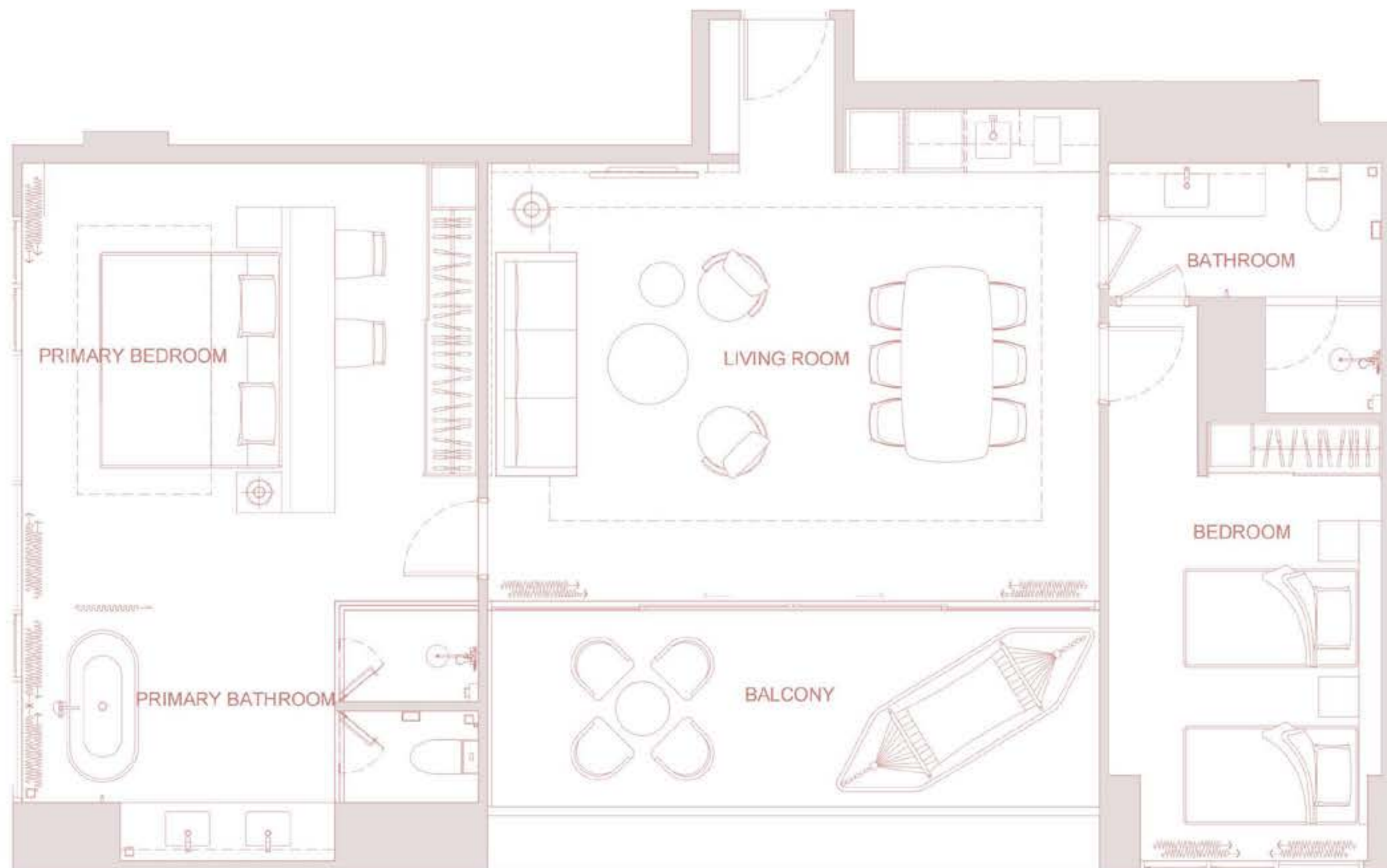
1 BEDROOM
TYPE
A2
70 SQ.M.



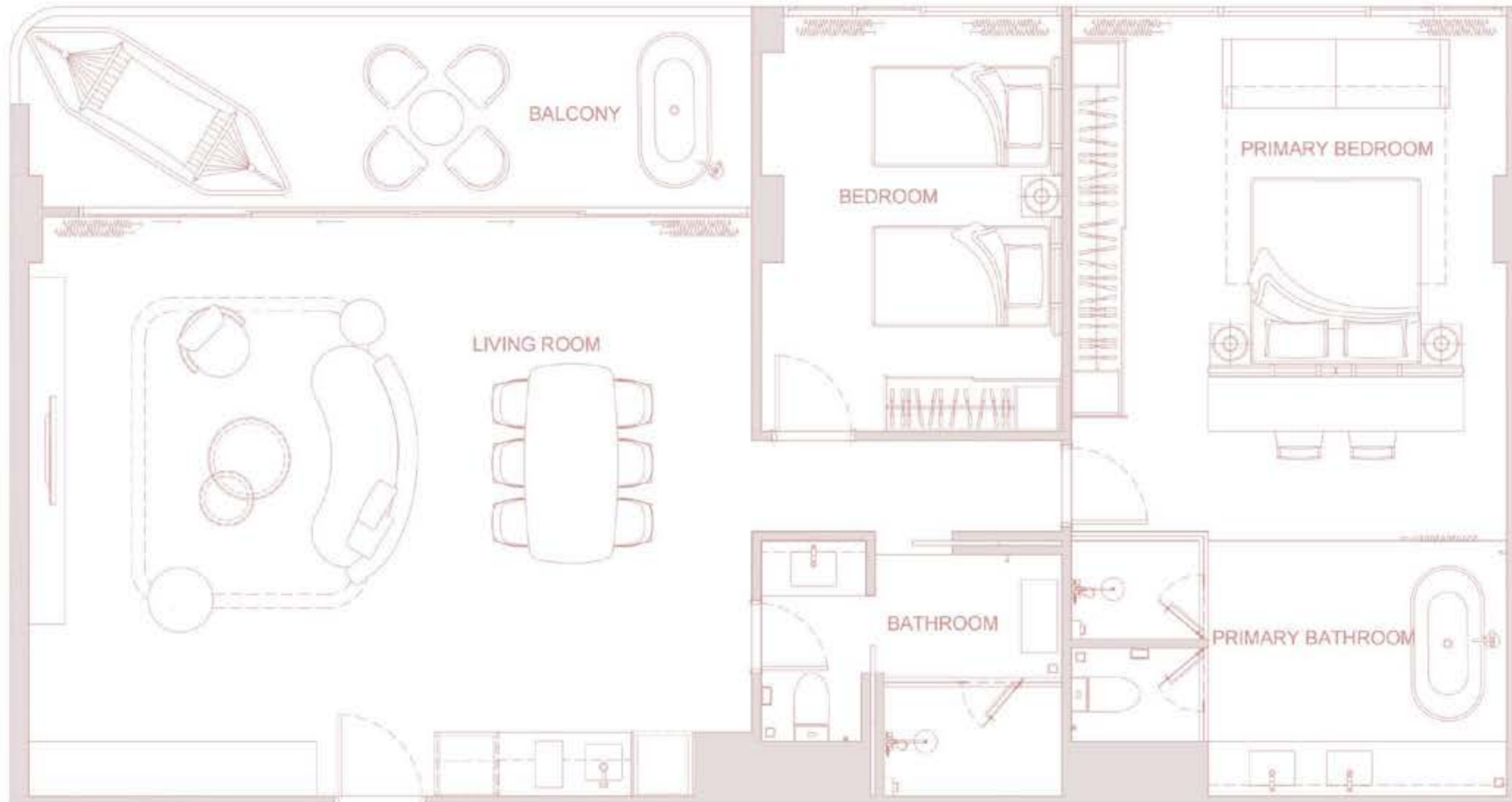
2 BEDROOM
TYPE

B1

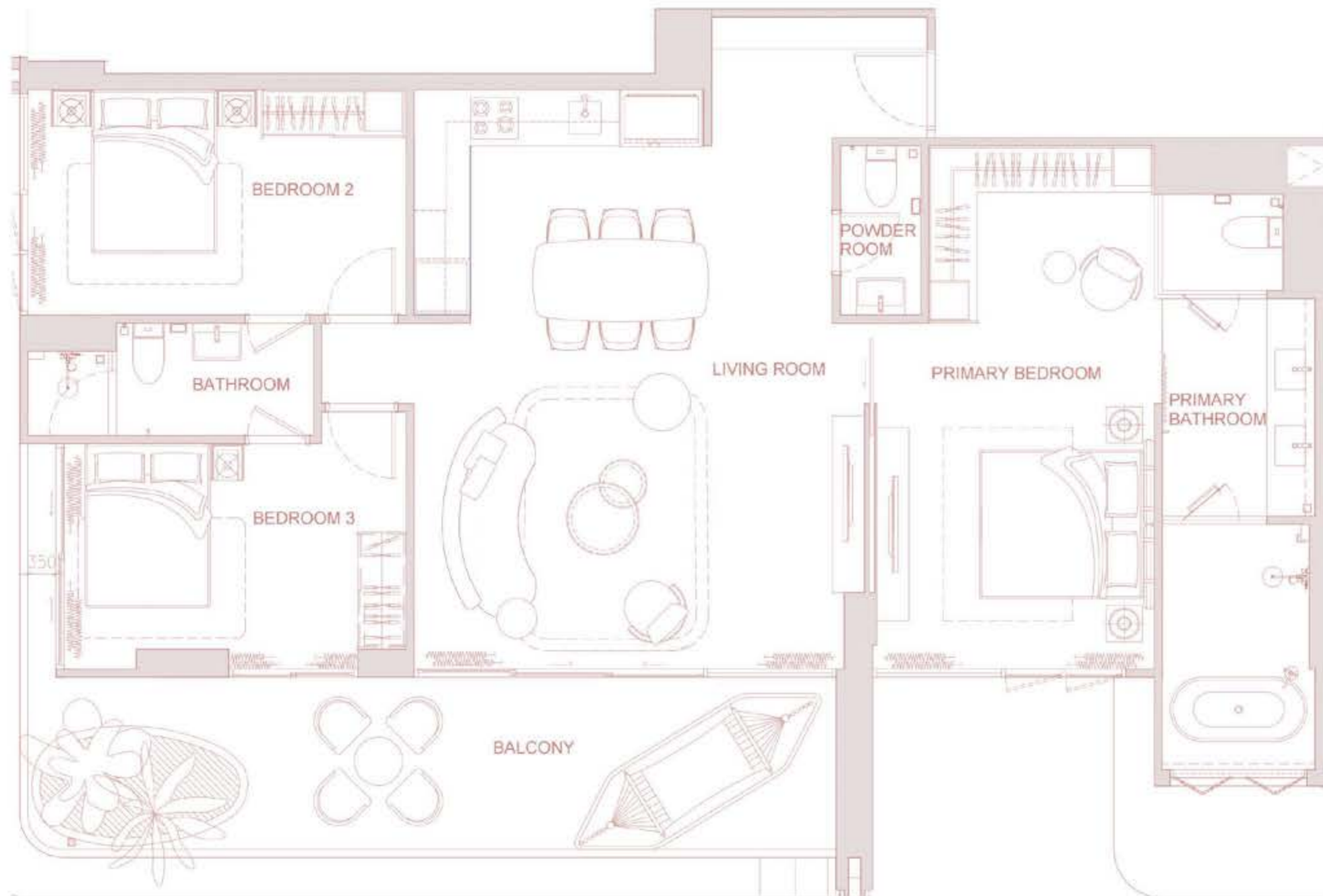
77 SQ.M.



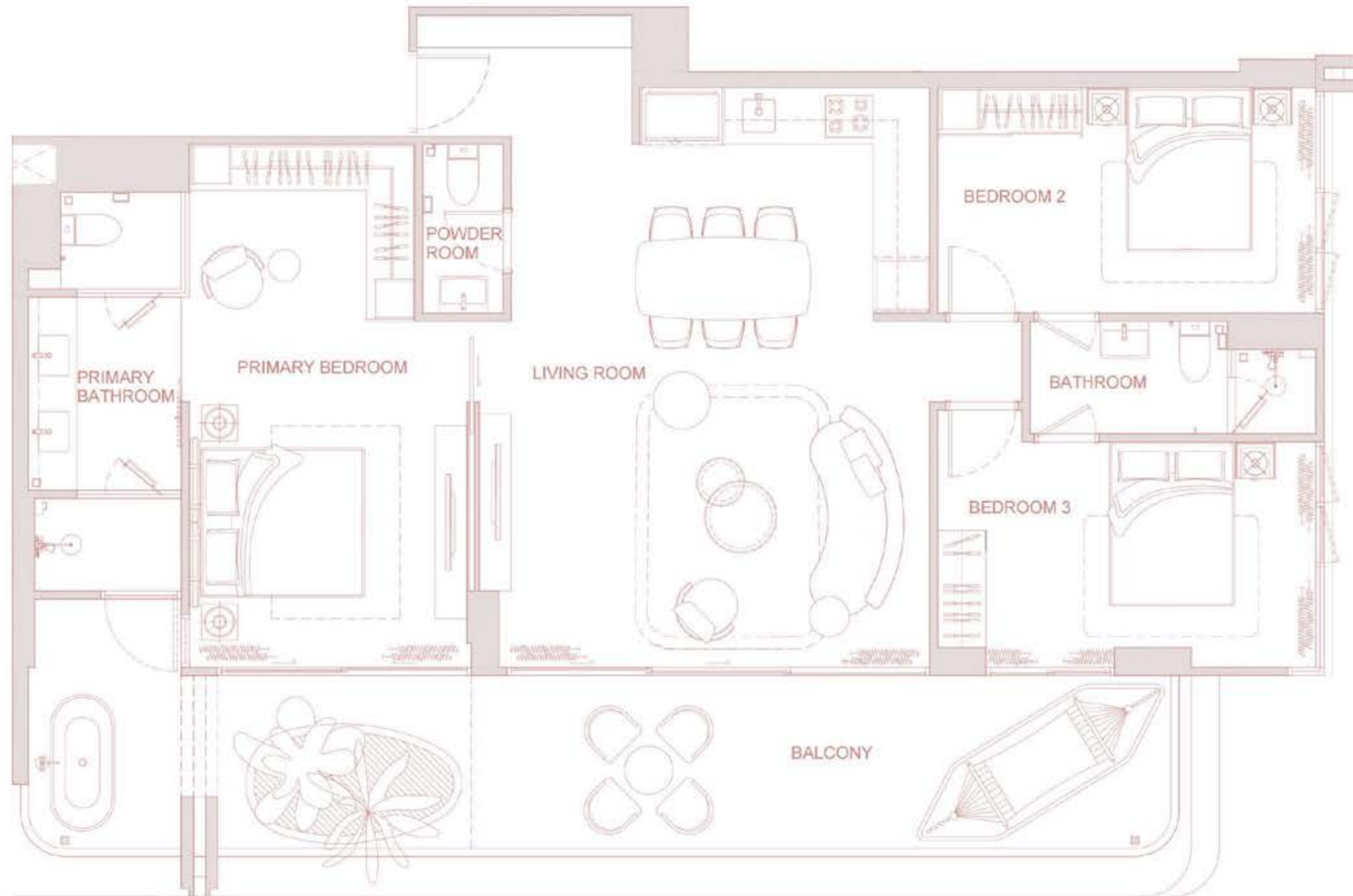
2 BEDROOM TYPE
B2
117 SQ.M.



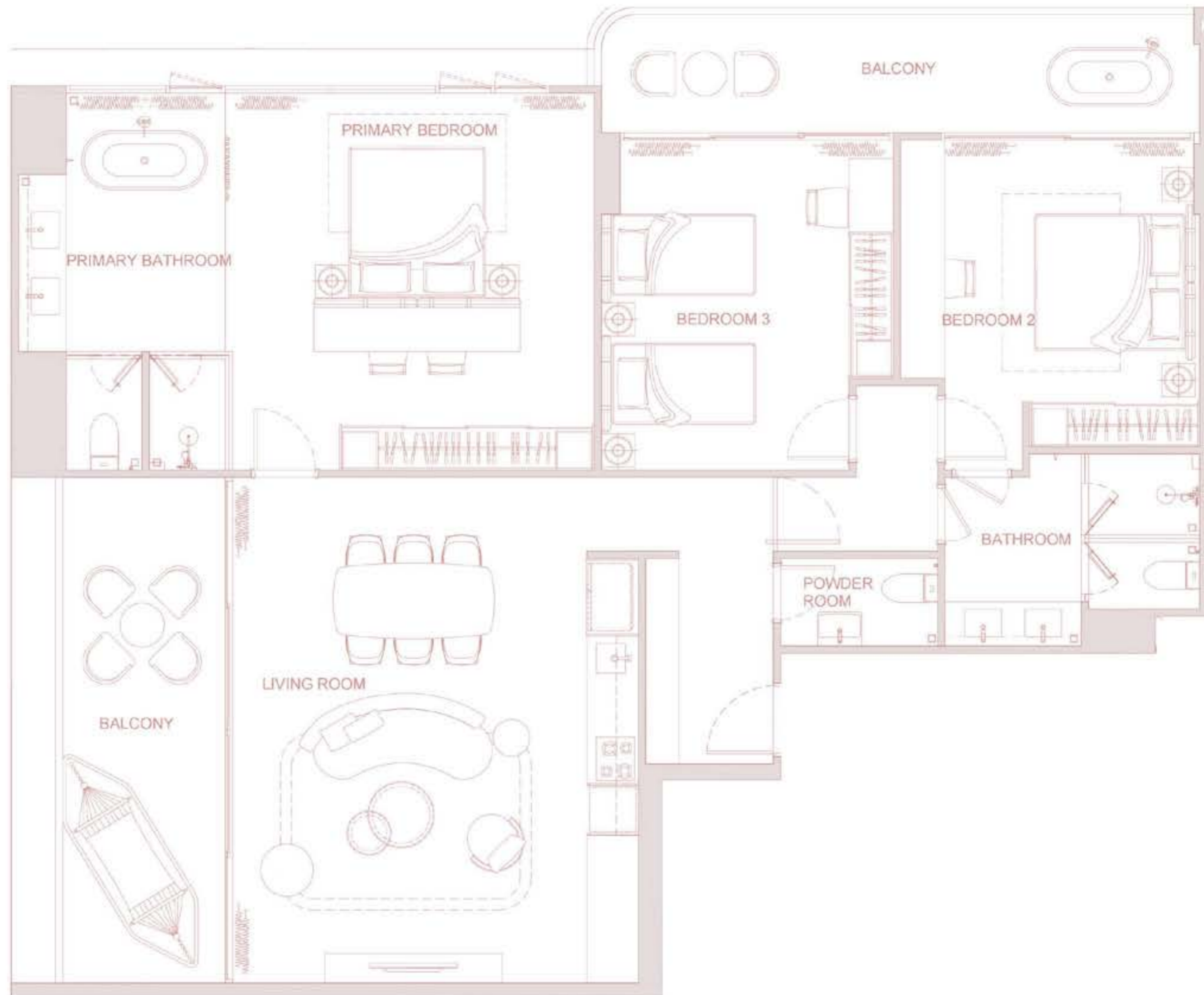
2 BEDROOM
TYPE
B3
139 SQ.M.



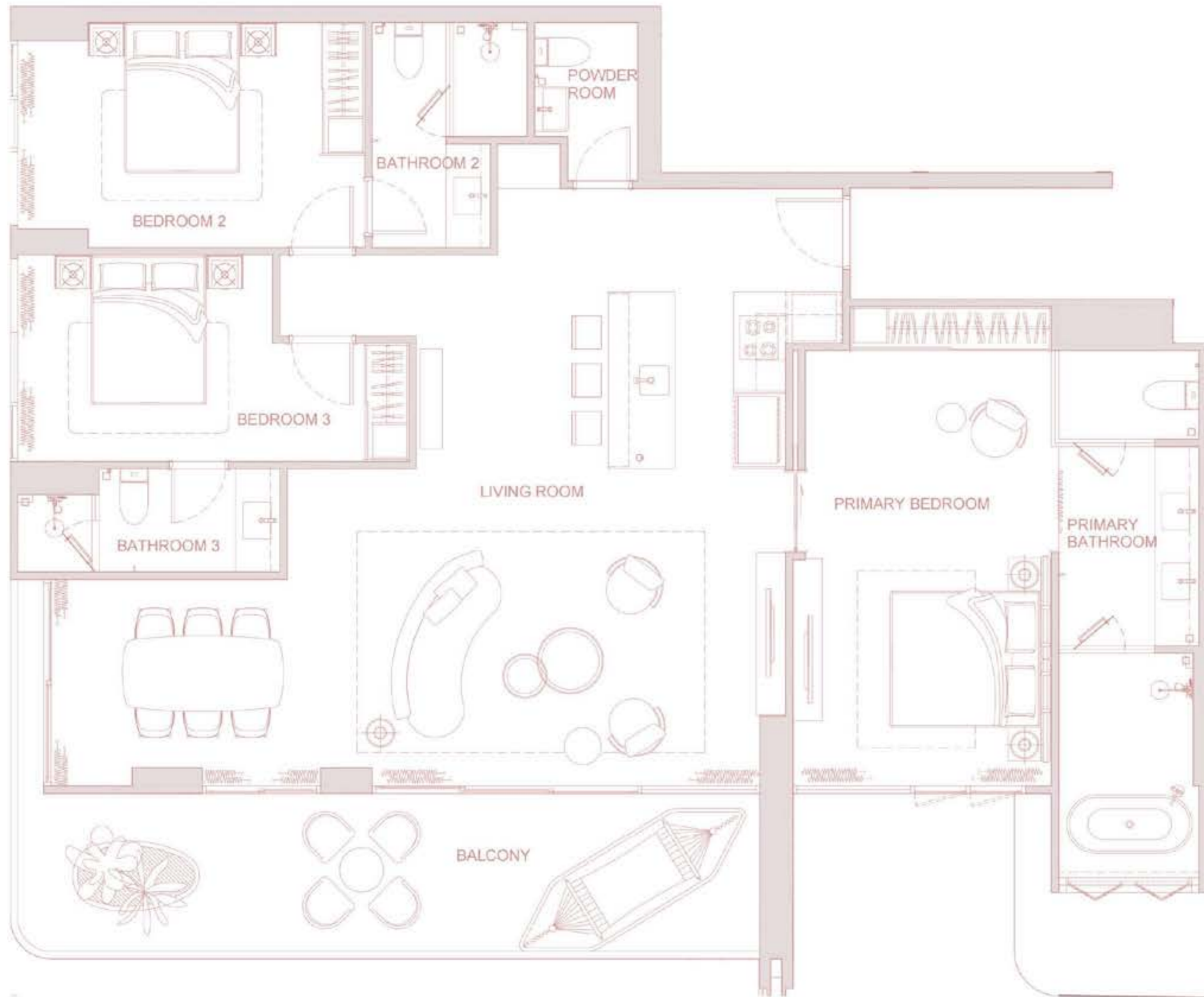
3 BEDROOM
TYPE
C1
139 SQ.M.



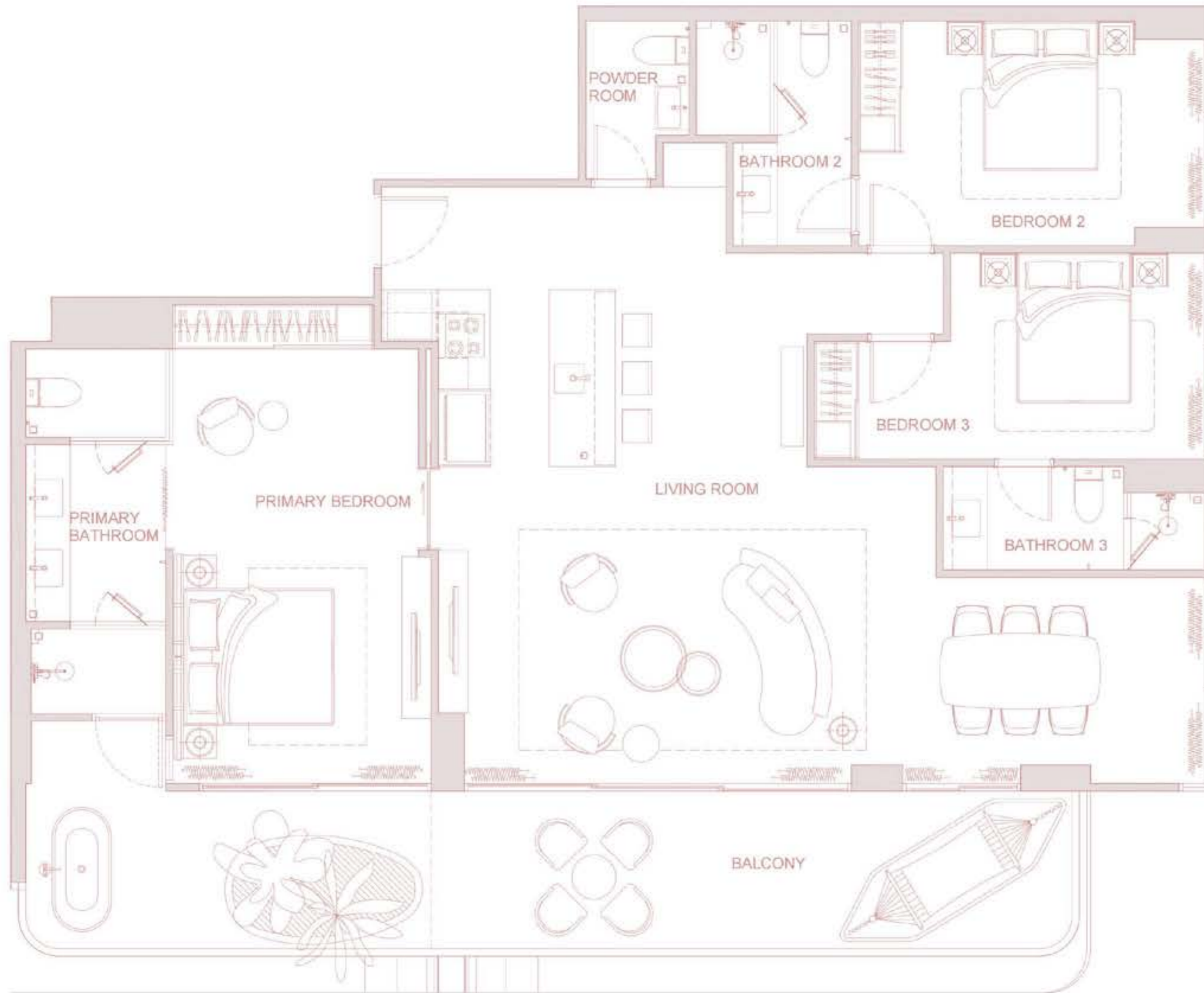
3 BEDROOM
TYPE
C2
145 SQ.M.



3 BEDROOM
TYPE
D1
165 SQ.M.



3 BEDROOM
TYPE
D2
166 SQ.M.



3 BEDROOM
TYPE
D3
172 SQ.M.



Paon Architects

Celebrated for their mastery in planning and design, effortlessly merge functionality with aesthetic appeal to maximize available space while prioritising the creation of livable, comfortable, and inviting environments.



WARANZ DESIGN GROUP CO.,LTD.

WaranzDesign Group

Renowned for redefining luxury living and elevating design standards, stands as a leading architectural and interior design firm in Thailand. Seamlessly blending modern aesthetics with traditional Thai elements, they craft unique and timeless spaces.



Kernel Design

A landscape architecture studio of renown, is celebrated for creating spaces that delicately balance human needs with environmental harmony. Each element in their work is thoughtfully designed, considering the specific context and criteria of each site.





LINE



Whatsapp

surfhouresidences.com

enquiries@surfhouresidences.com

+66 92 594 5464



[surfhouresidencesphuket](#)

10 Soi Vibhavadi Rangsit 32 Yaek 7, Khwaeng Chatuchak, Khet Chatuchak, Bangkok 10900, Thailand