



RIMBUN  SAUJANA

RESIDENCY

— FREEHOLD —

Artist's impression only

Exquisite Living
Masterfully Crafted By
Award-winning
Australian Architect —
Philip Cox



A Sprawling 6.40 Acres Residential Development
Located within The Prestigious Enclave of
Saujana Resort



Low Density
Only 336 Units
8 Units On Each Floor



Freehold Semi-D
In The Sky



Open Concept Space Living with The Option
of Balcony or Lanai Design



Choice of 2, 3, &
3+1 Bedrooms
Dual Key Enable



127,000 Sqft Podium
Featuring Resort-style
Landscape

Artist's impression only



Rimbun Living at Saujana Resort



Artist's impression only



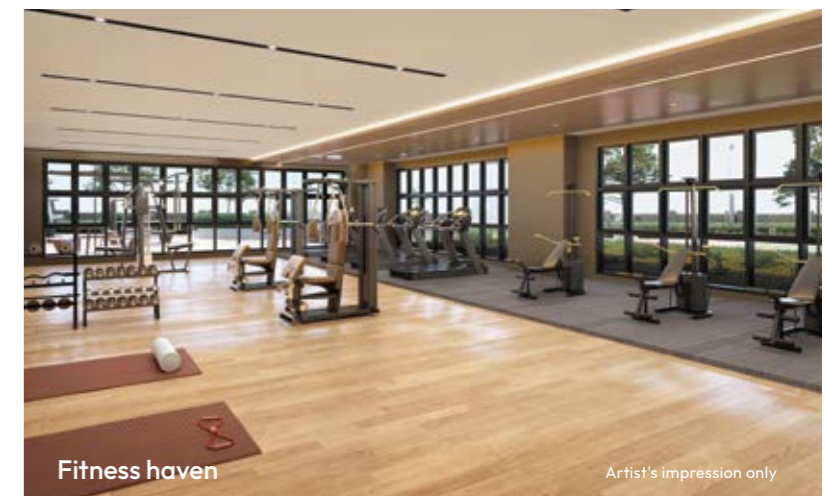
Experience opulent living with balcony and lanai designs

Artist's impression only



Grand lobby

Artist's impression only



Fitness haven

Artist's impression only

SECURITY



24-Hour Multi-tier Security System



4-Lane Grand Entrance



RFID Access System

WELLNESS



28 Interactive Facilities



50m Olympic Length Pool



500m Jogging Track

SUSTAINABILITY & CONVENIENCES



2 Parking Lots Per Unit



Separate Parking Entrance to Ease Traffic



EV-Charging Stations



Dedicated E-hailing Pick-up Point



Delivery / Pick-Up Parcel Point



Storage Rooms For Rent

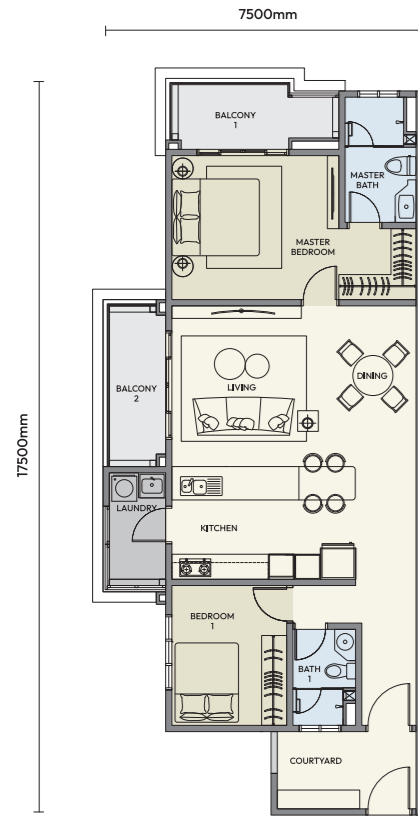


Sustainable Living With Green Building Certificate

HOMES WITH BALCONY

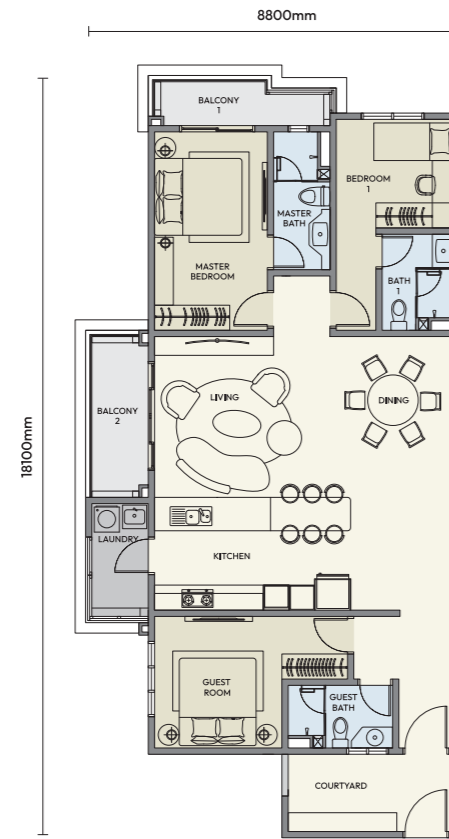
Type A1 - Balcony

1173 sqft
2 Bedrooms, 2 Bathrooms



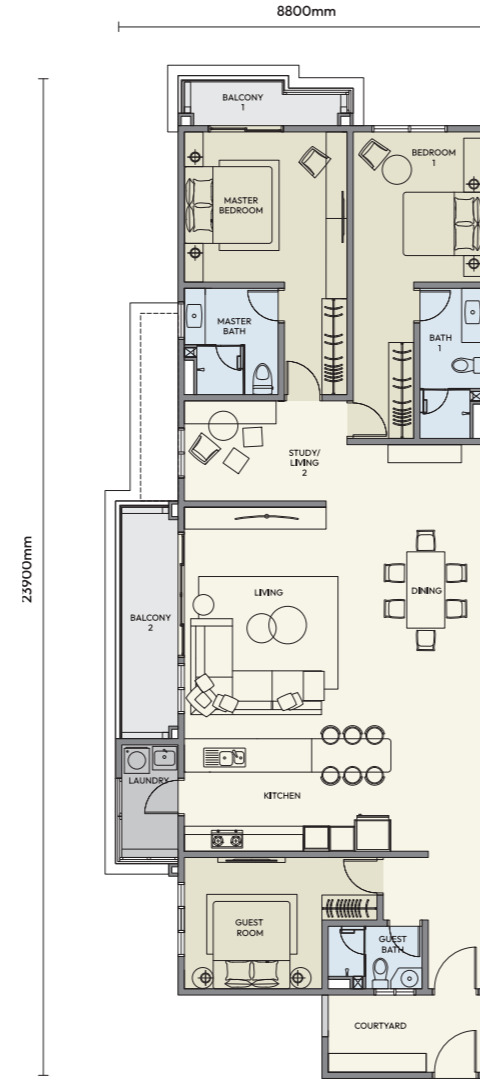
Type B1 - Balcony

1432 sqft
3 Bedrooms, 3 Bathrooms



Type C1 - Balcony

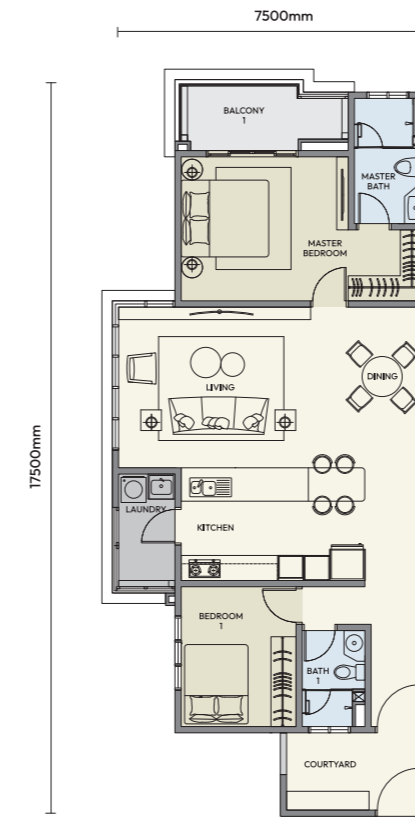
1894 sqft
3 Bedrooms, 3 Bathrooms + 1 Study Area



HOMES WITH LANAI

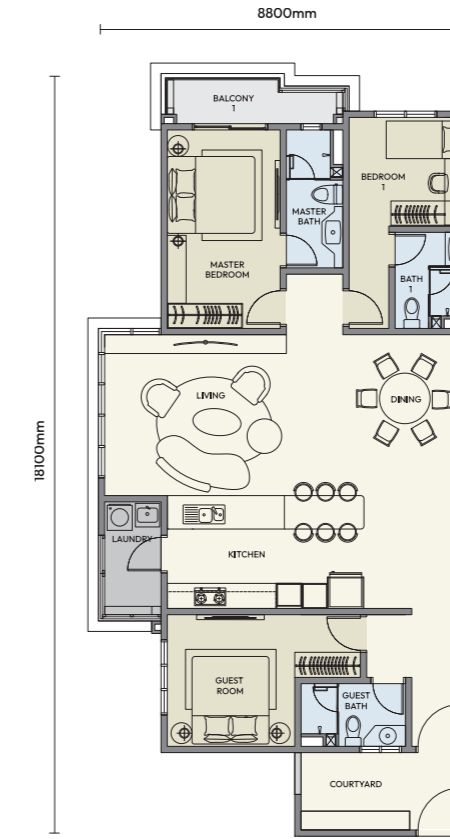
Type A2 - Lanai

1173 sqft
2 Bedrooms, 2 Bathrooms



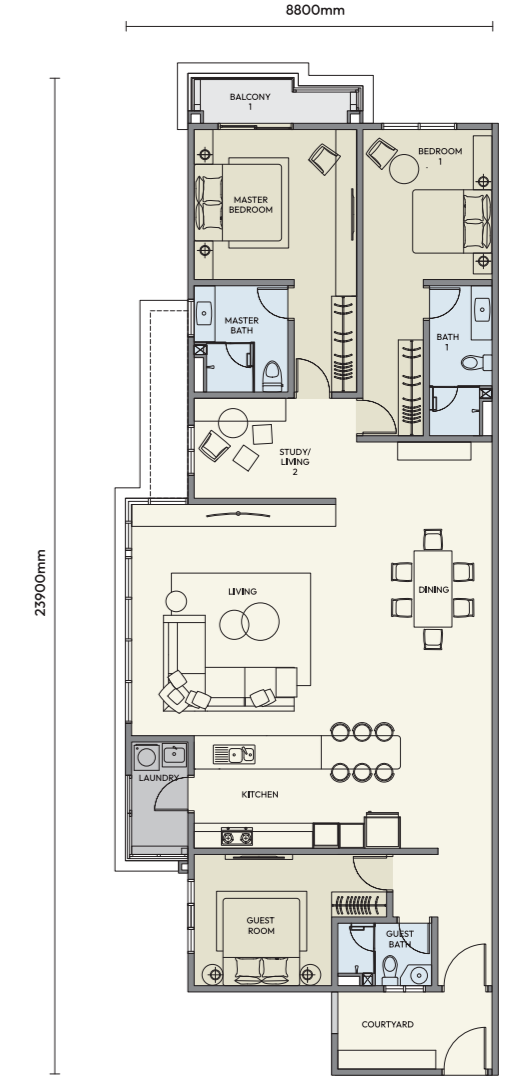
Type B2 - Lanai

1432 sqft
3 Bedrooms, 3 Bathrooms



Type C2 - Lanai

1894 sqft
3 Bedrooms, 3 Bathrooms + 1 Study Area



BUILDING SPECIFICATIONS

STRUCTURE	Reinforced Concrete Structure
WALL	Reinforced Concrete Wall / Brick Wall / Block Wall
ROOF FRAMING	Reinforced Concrete Flat Roof
CEILING	Skim Coat / Plaster Ceiling
WINDOWS	Metal Frame Glass Window
DOORS	Metal Frame Grille Door Metal Frame Solid Timber Fire Door Metal Frame Solid Timber Door Metal Frame Glass Sliding Door Metal Frame Glass Louvres Door
IRONMONGERY	Quality Locksets
WALL FINISHES	
Kitchen	Ceramic Tiles Up To Ceiling Level / Emulsion Paint
Bathroom	Ceramic Tiles Up To Ceiling Level / Emulsion Paint
Internal / Other	
FLOOR FINISHES	All Types All Ceramic Tiles Except Bedrooms of Laminated Timber Flooring

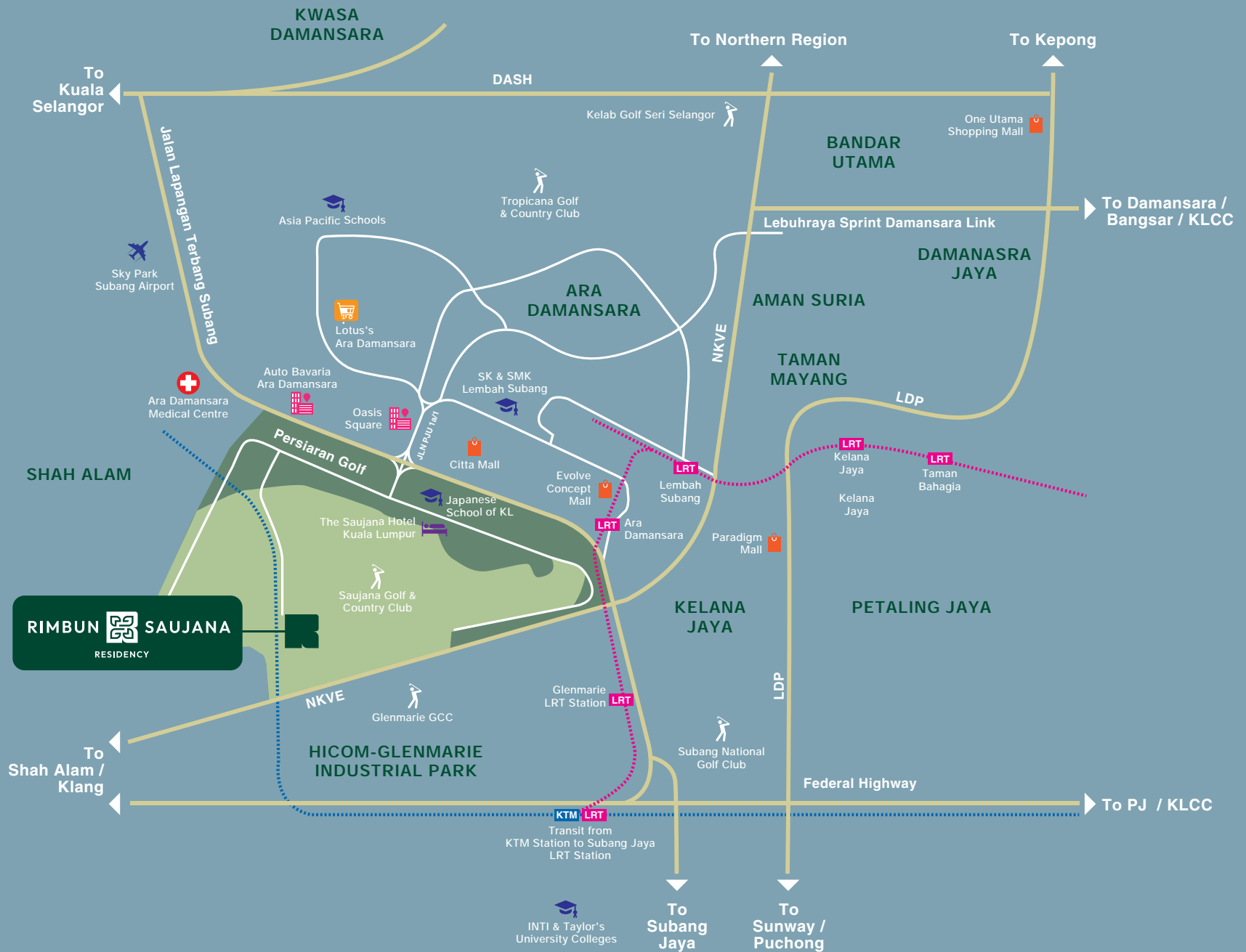
SANITARY AND PLUMBING FITTINGS	Kitchen Sink Wash Basin Shower Rose / Hand Shower Water Closet Bib Tap Hand Bidet
ELECTRICAL INSTALLATION	Lighting Point 13A Socket Outlet 15A Socket Outlet Ceiling Fan Point TV Point Centralised Heater Point Air Cond Point Door Bell Point Distribution Board
INTERNAL TELEPHONE CONDUIT AND CABLING	Fibre Wall Socket (FWS)

	Type A1	Type A2	Type B1	Type B2	Type C1	Type C2
1	1	1	1	1	1	1
3	3	3	4	4	4	4
2	2	2	3	3	3	3
2	2	2	3	3	3	3
5	4	6	5	6	5	5
2	2	3	3	3	3	3
31	31	41	41	47	47	47
38	38	43	43	47	47	47
2	2	2	2	2	2	2
4	4	5	5	6	6	6
2	2	2	2	2	2	2
1	1	1	1	1	1	1
3	3	4	4	5	5	5
1	1	1	1	1	1	1
1	1	1	1	1	1	1
1	1	1	1	1	1	1
1	1	1	1	1	1	1



Artist's impression only

The Connectivity



01

Medical

Ara Damansara Medical Centre
Subang Jaya Medical Centre
Sunway Medical Centre
Thompson Hospital Kota Damansara

02

Education

The Japanese School of KL
Asia Pacific Schools
INTI College
Sunway University
SEGi University
Taylor's University
HELP University

03

Recreational & Leisure

Sunway Lagoon Theme Park
Taman Botani Negara Shah Alam
Glenmarie Golf & Country Club
Tropicana Golf & Country Resort
Subang National Golf Club (KGNS)

04

Connectivity

Subang SkyPark
Ara Damansara LRT Station
Lembah Subang LRT Station
Glenmarie LRT Station

05

Shopping & Essentials

Citta Mall
Lotus's Ara Damansara
Tropicana Gardens Mall
1 Utama Shopping Centre
Paradigm Mall
NU Empire Shopping Gallery
Sunway Pyramid Shopping Mall

06

Business Offices

Sime Darby HQ
Oasis Corporate Park
Dataran PHB Office Park
Dana 1 Commercial Centre

A Prestigious Development by:



Developer:

SAUJANA DEVELOPMENT SDN. BHD. (847605-T)
1, Persiaran Golf, Saujana Resort, Seksyen U2,
40150 Shah Alam, Selangor

Sales Gallery:



03 7859 6000
012 877 8023



Developer: Saujana Development Sdn. Bhd. Developer License No: 30619/11-2028/0294(A) · Validity: 09/11/2023-08/11/2028 · Sales & Advertising Permit No : 30619-1/04-2027/0347(A)-(S) · Validity: 26/04/2024 - 25/04/2027 · Tenure of Land: Freehold · Land Encumbrances: Malayan Banking Berhad · Approving Authority: Majlis Bandaraya Shah Alam · Building Plan Approval No: MBSA/BGN/BB/600-1(PS)/SEK.U2/0109-2023 · Date of Approval: 22/11/2023 · Number of Unit: Type A1: 44, Type A2: 40, Type B1: 84, Type B2: 80, Type C1: 44, Type C2: 44 · Expected Date of Completion: April 2027 · Selling Price: Block A1 (84 Units Apartment 11 Floors) : Min. RM1,055,800.00 - Max. RM1,459,800.00, Block A2 (84 Units Apartment 11 Floors) : Min. RM1,055,800.00 - Max. RM1,459,800.00, Block B1 (84 Units Apartment 11 Floors) : Min. RM1,055,800.00 - Max. RM1,459,800.00, Block B2 (84 Units Apartment 11 Floors) : Min. RM1,055,800.00 - Max. RM1,459,800.00 · Type of Development: Apartment · Bumiputra Discount: 7% · Interest Restriction: None · THIS AD HAS BEEN APPROVED BY THE NATIONAL HOUSING DEPARTMENT.

Disclaimer: The information contained here-in is subject to change and cannot form part of an offer or contract. All renderings are artist's impression only. All measurements are approximate. While every reasonable care has been taken in preparing the advertisement, the developer cannot be held responsible for any inaccuracy. All the above items are subject to variations, modifications and substitutions as may be required by the Authorities or recommended by the Architect or Engineer.