



N I V A T I

- THONGLOR 23 -

An aerial photograph of a desert landscape. A winding road or path cuts through the terrain, which is covered in sparse, low-lying vegetation and patches of bare earth. A prominent, large rock formation or mesa is visible in the center-right of the frame. The overall scene is arid and rugged.

RESIDE IN YOUR ELEMENT

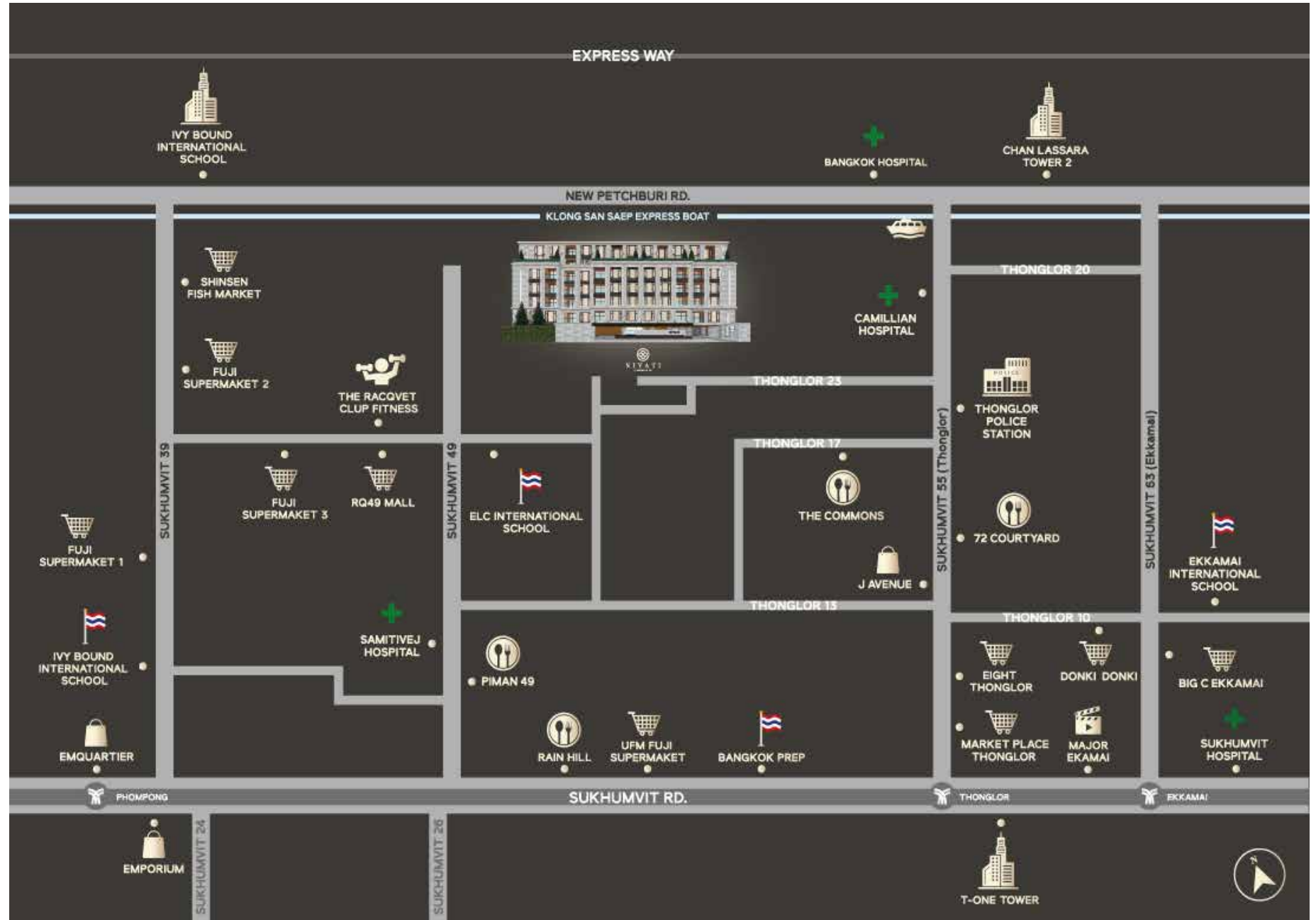


NIVATI









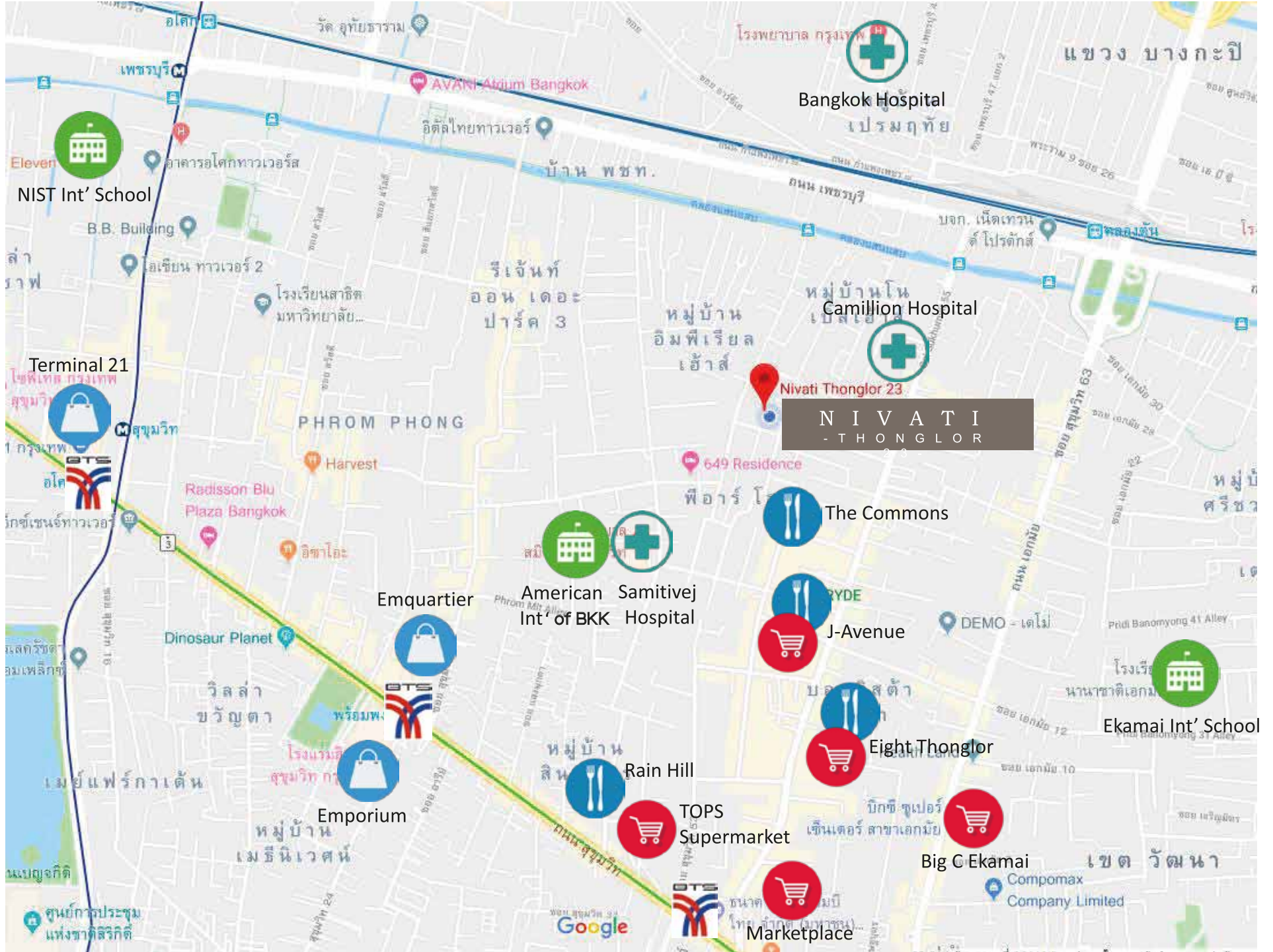
# LOCATION

BEATPEACE  
IN A PREMIUM LIFESTYLE  
AREA  
THONGLOR 23



# LOCATION

-  Skytrain
-  Hospital
-  Shopping mall
-  Supermarket
-  Community mall / restaurant
-  International school



THE LOCATION :  
ATTITUDE

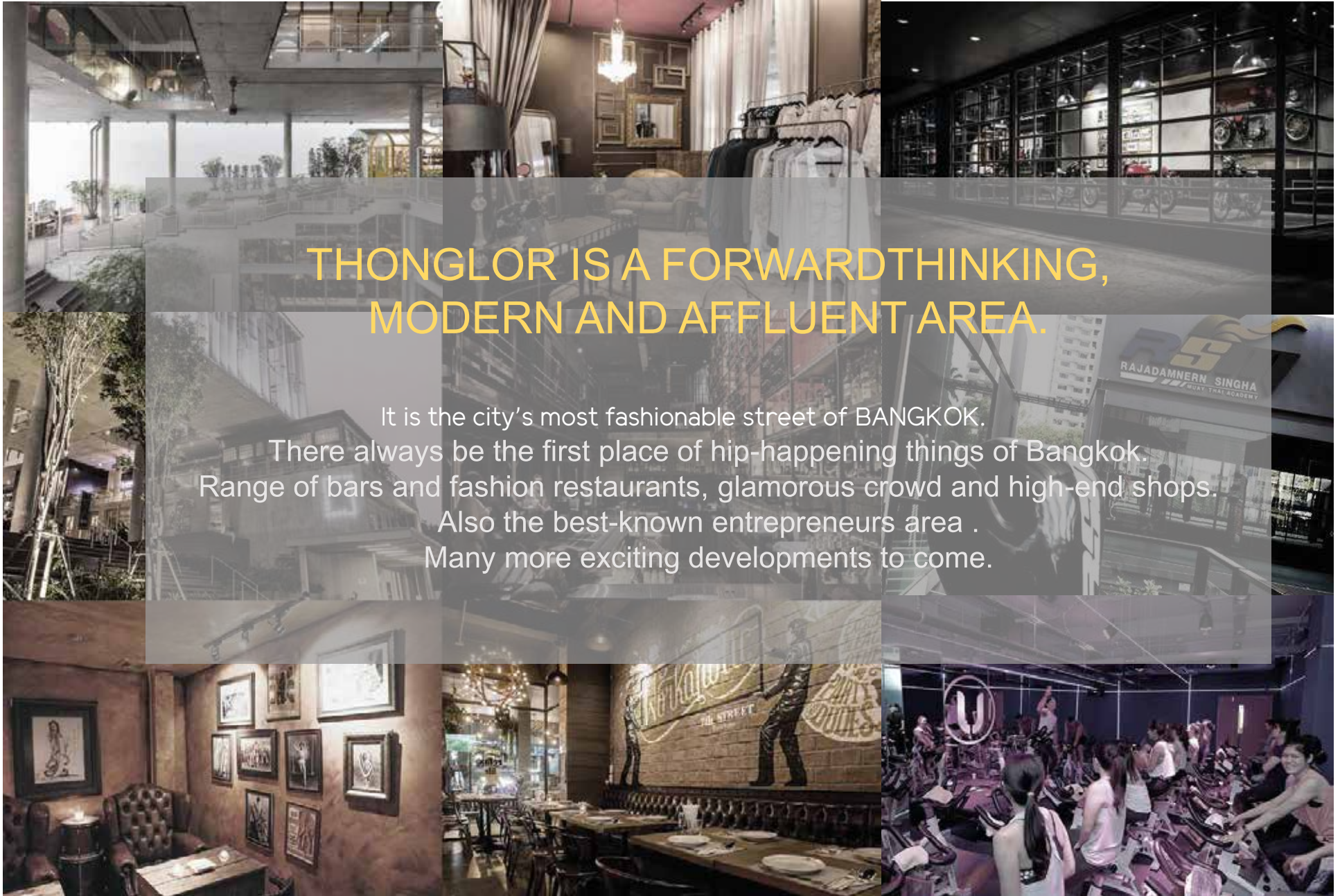


THONGLOR IS THE PLACE OF LUXURY  
RESIDENTIAL.

Beside the top class lifestyle amenities, Thonglor is a place that comprises of many luxury houses of high net worth people and also high-rise condominiums with the minimum starting prices at 200,000 - 350,000 THB/SQ.M.



THE LOCATION :  
ATTITUDE



THONGLOR IS A FORWARDTHINKING,  
MODERN AND AFFLUENT AREA.

It is the city's most fashionable street of BANGKOK.  
There always be the first place of hip-happening things of Bangkok.  
Range of bars and fashion restaurants, glamorous crowd and high-end shops.  
Also the best-known entrepreneurs area .  
Many more exciting developments to come.



---

## PROJECT INFORMATION

PROJECT NAME	:	NIVATI
LOCATION	:	SOI THONGLOR 23, SUKHUMVIT 55, KLONG TON NUEA, WATTHANA, BANGKOK
PROJECT AREA	:	1 - 1 - 34 RAI (2,136 SQ.M.)
PROJECT DETAIL	:	7 - STOREY WITH AUTOMATIC UNDERGROUND PARKING 150%
NUMBER OF UNITS	:	52 UNITS
UNIT SIZE	:	70 - 221 SQ.M.
UNIT TYPE	:	1 - 3 BEDROOM, 1 - 3 BEDROOM DUPLEX
FACILITIES	:	LOBBY, BUSINESS LOUNGE, SWIMMING POOL, FITNESS, AUTO PARKING 150% WITH 2 EV CHARGERS AND 24 - HOURS SECURITY GUARD, PROPERTY ASSISTANCE, SHUTTLE SERVICE, HOME AUTOMATION
DEVELOPER	:	888 THONGLOR CO.,LTD
ARCHITECT & INTERIOR	:	DWP CITYSPACE LTD.
LANDSCAPE	:	LANDSCAPE COLLABORATION CO., LTD.
STRUCTURE ENGINEER	:	QBIC ENGINEERING AND ARCHITECTS CO., LTD.
MECHANICAL ENGINEER	:	WEP ENGINEERING PARTNERS CO., LTD.
CONSTRUCTION MANAGEMENT	:	STONEHENGE INTER PCL.
OUR PARTNERS	:	KITCHEN: POGGENPOHL, DORNBRACHT, SIEMENS SANITARYWARE: VILLEROY & BOCH, GESSI, BLANCO, HAFELE
CONSTRUCTION START	:	Q4 / 2017
CONSTRUCTION FINISH	:	Q1 / 2020

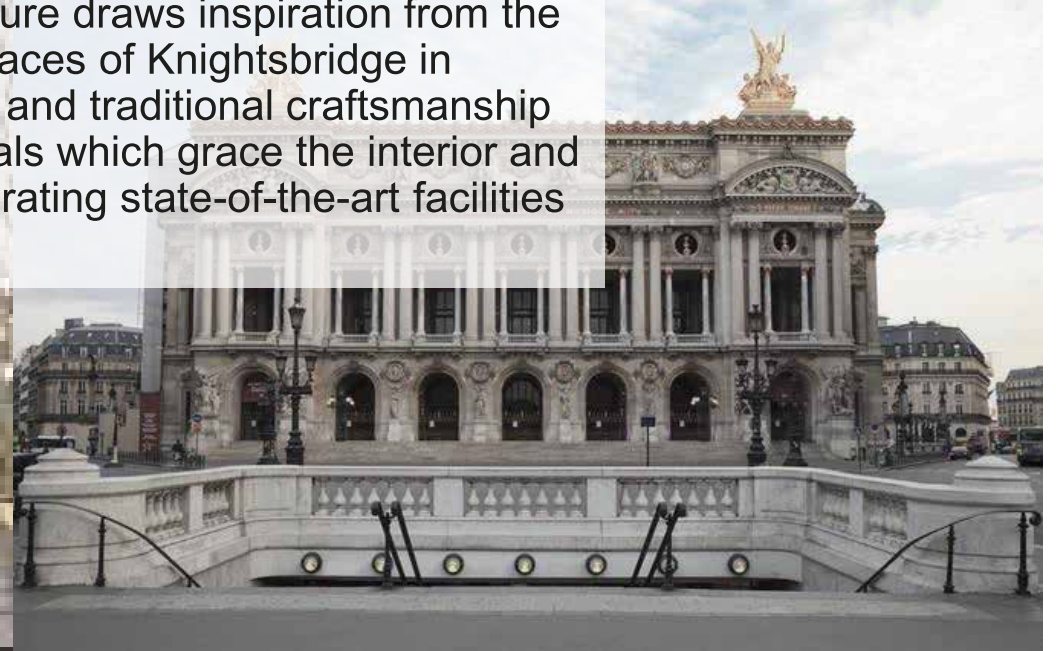
---

DESIGN  
CONCEPT



## Elegant Classic Contemporary

The timeless classicism of the architecture draws inspiration from the Beaux-Art dignity of the prestigious terraces of Knightsbridge in London, embracing a sense of integrity and traditional craftsmanship seen in every detail of the finest materials which grace the interior and exterior surfaces, whilst discreetly integrating state-of-the-art facilities and amenities.





---

KEY  
CHARACTERISTI  
C

**LUXE**

**HOME-LIKE**

**EXCLUSIVE PRIVACY**

**SERENITY**

**SOPHISTICATED ELEGANCE**

**SOCIAL SOLIDARITY**

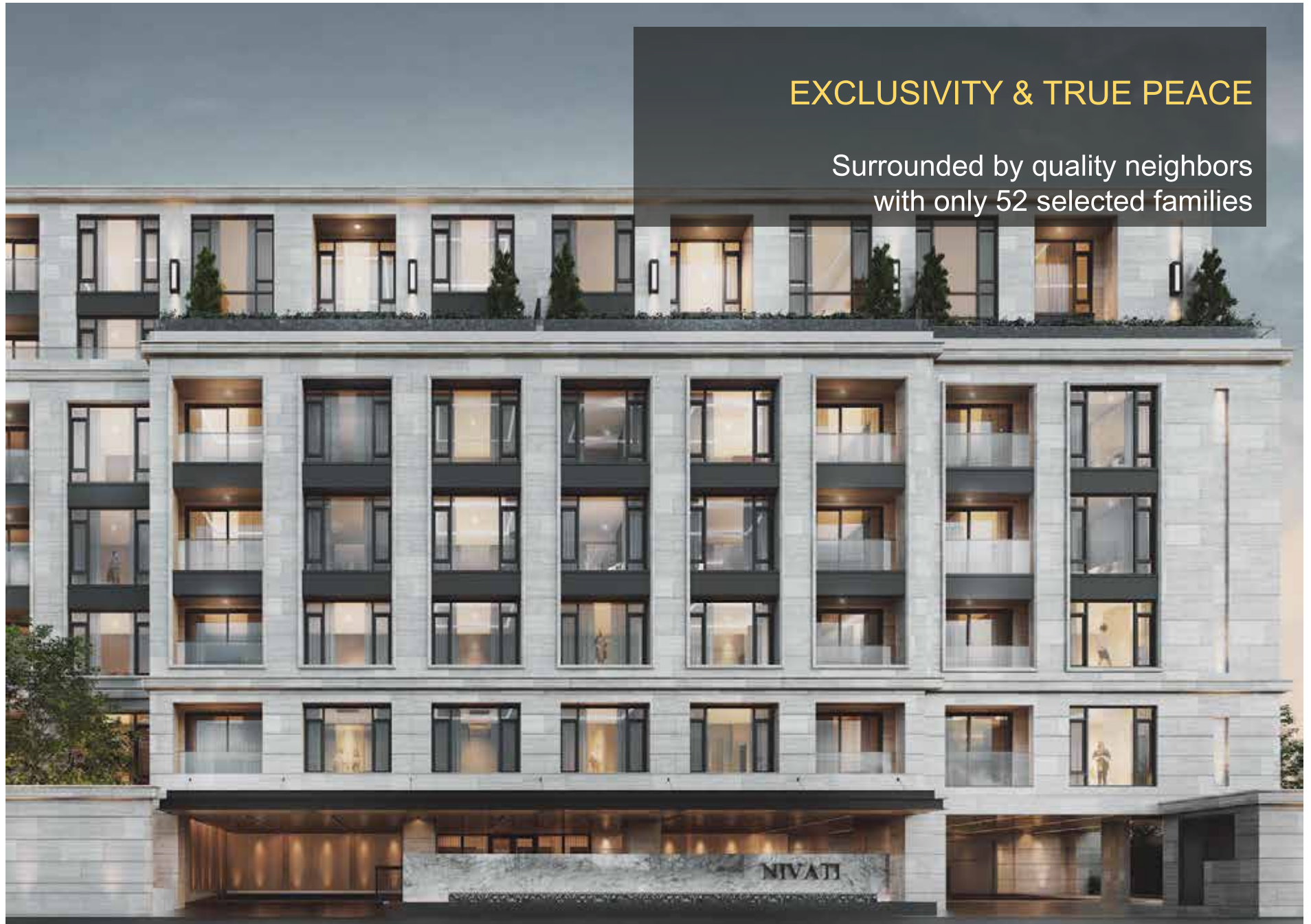


---

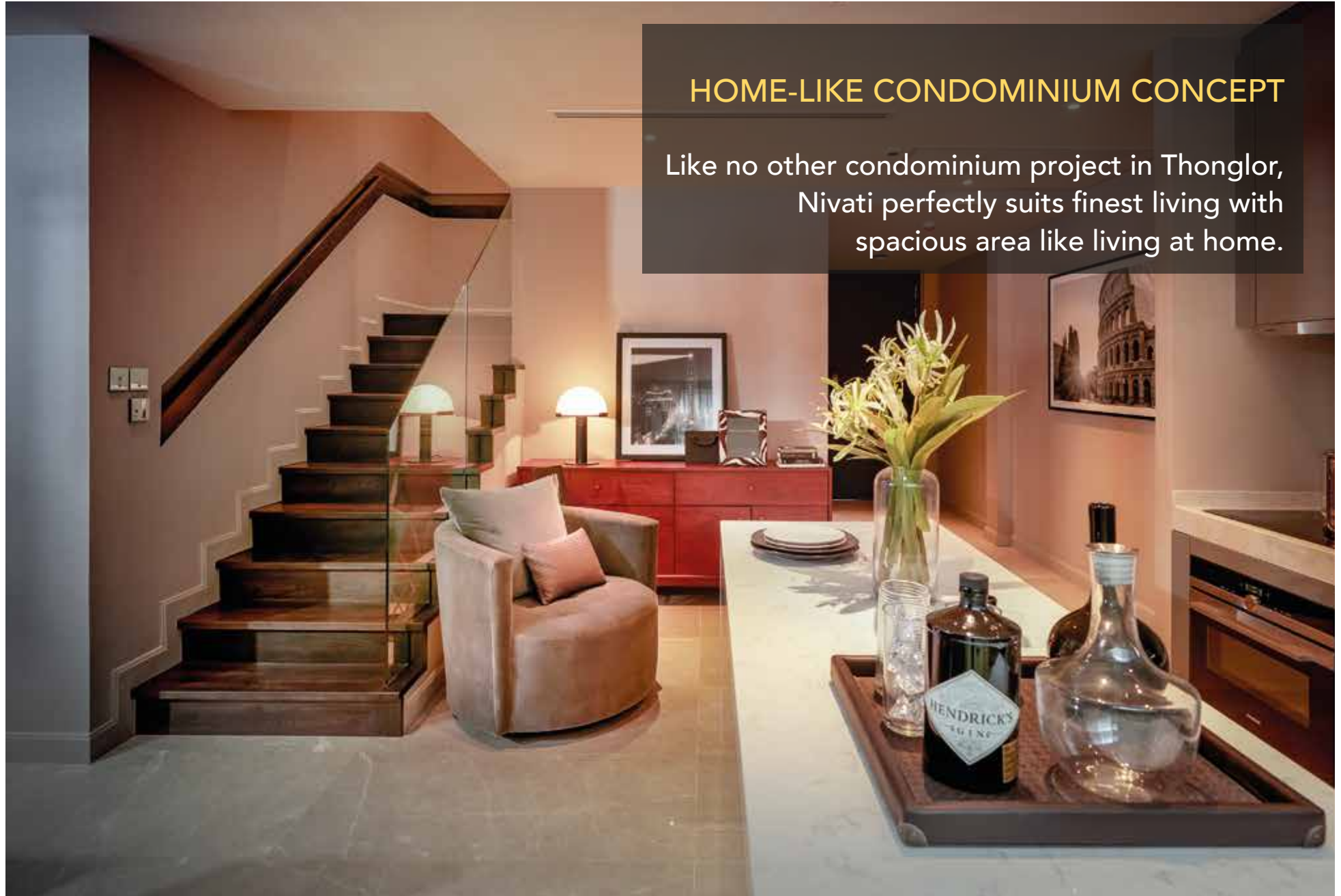
UNIQUE  
SELLING POINT

EXCLUSIVITY & TRUE PEACE

Surrounded by quality neighbors  
with only 52 selected families



UNIQUE  
SELLING POINT



HOME-LIKE CONDOMINIUM CONCEPT

Like no other condominium project in Thonglor, Nivati perfectly suits finest living with spacious area like living at home.

---

UNIQUE  
SELLING POINT



WORLD-CLASS DESIGN &  
MATERIAL SELECTION

Contemporary-yet-classic design while all fixtures and fittings come from world-renowned brands including Poggenpohl kitchen and cabinets, Villeroy & Boch , Gessi bathroom ware

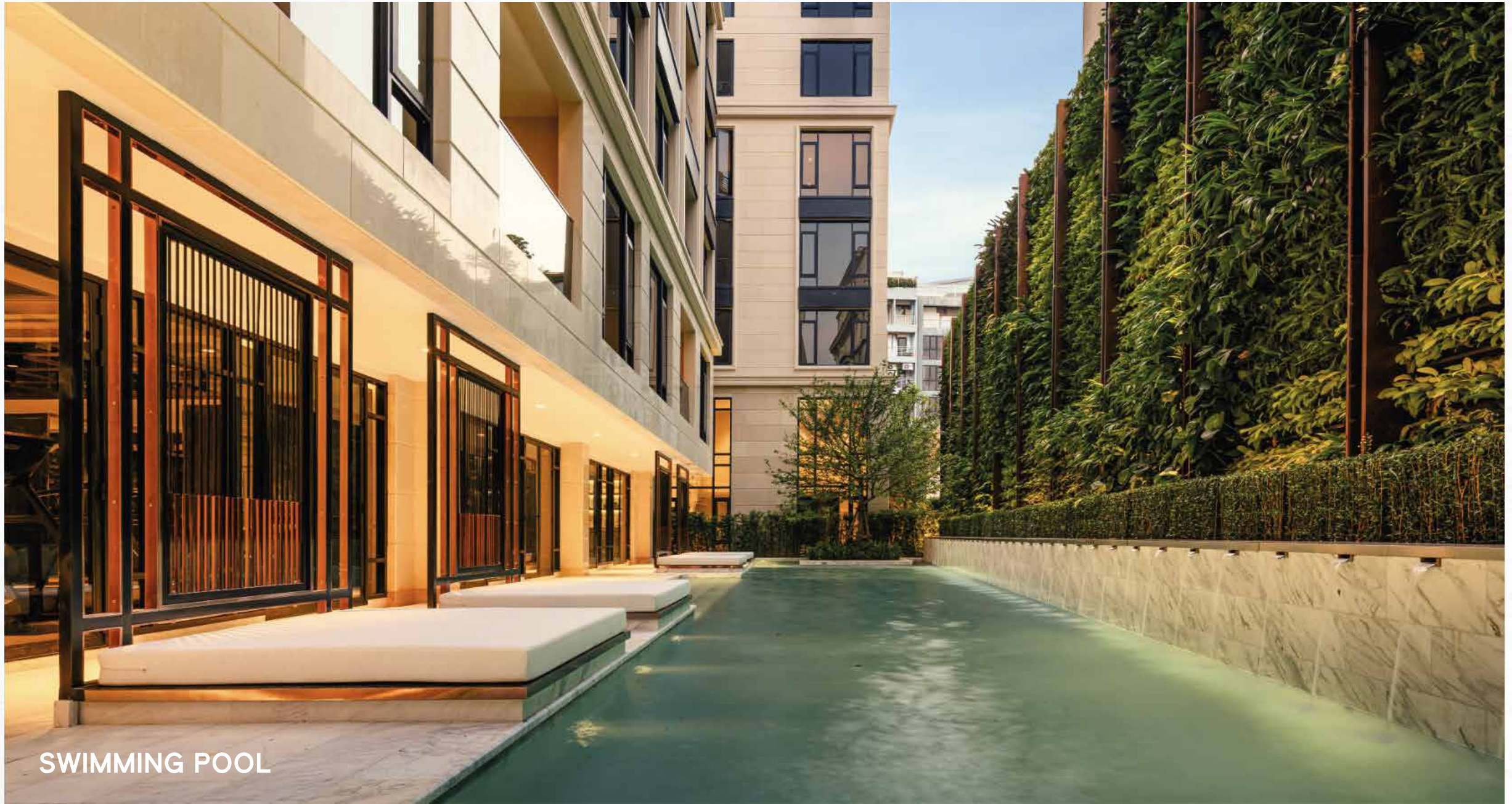
FACILITY



FITNESS

LOBBY





SWIMMING POOL



**BUSINESS LOUNGE**



FITNESS



AUTOMATED PARKING

---

ROOM TYPE

Unit Type	Unit Size (Sq.m.)	No. of Unit	Parking lot provide
1- BED	70-77	6	1
1- BED DUPLEX	110-125	3	1
2- BED	104-139	33	1
2- BED DUPLEX	157-201	4	2
3- BED	178	5	3
2- BED DUPLEX	221	1	3
VISITOR		10	
TOTAL		78	68

FLOOR PLAN



1<sup>st</sup> FLOOR

FLOOR PLAN



2<sup>nd</sup> FLOOR



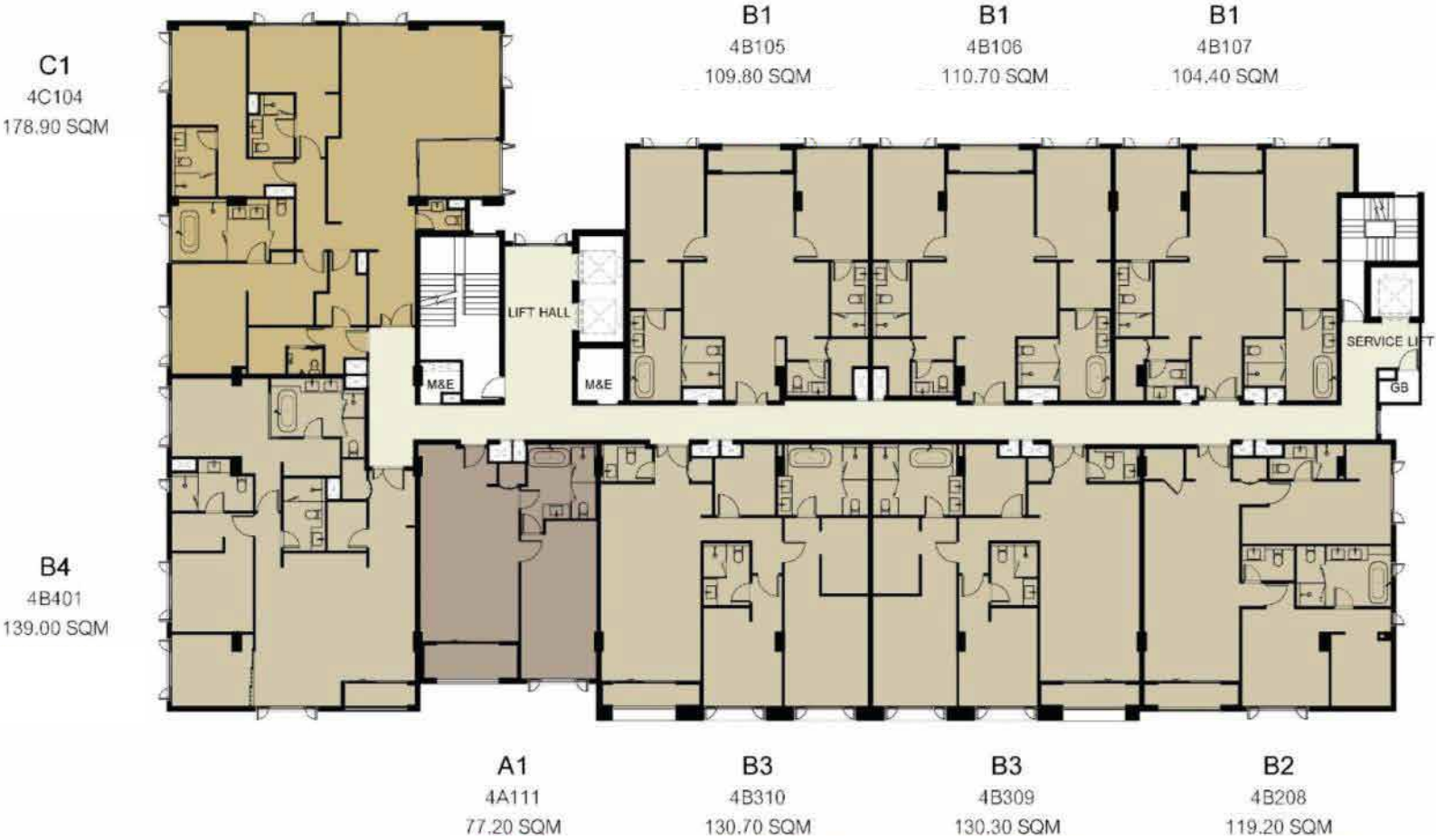
FLOOR PLAN



3<sup>rd</sup> FLOOR



FLOOR PLAN



4<sup>th</sup> FLOOR

FLOOR PLAN



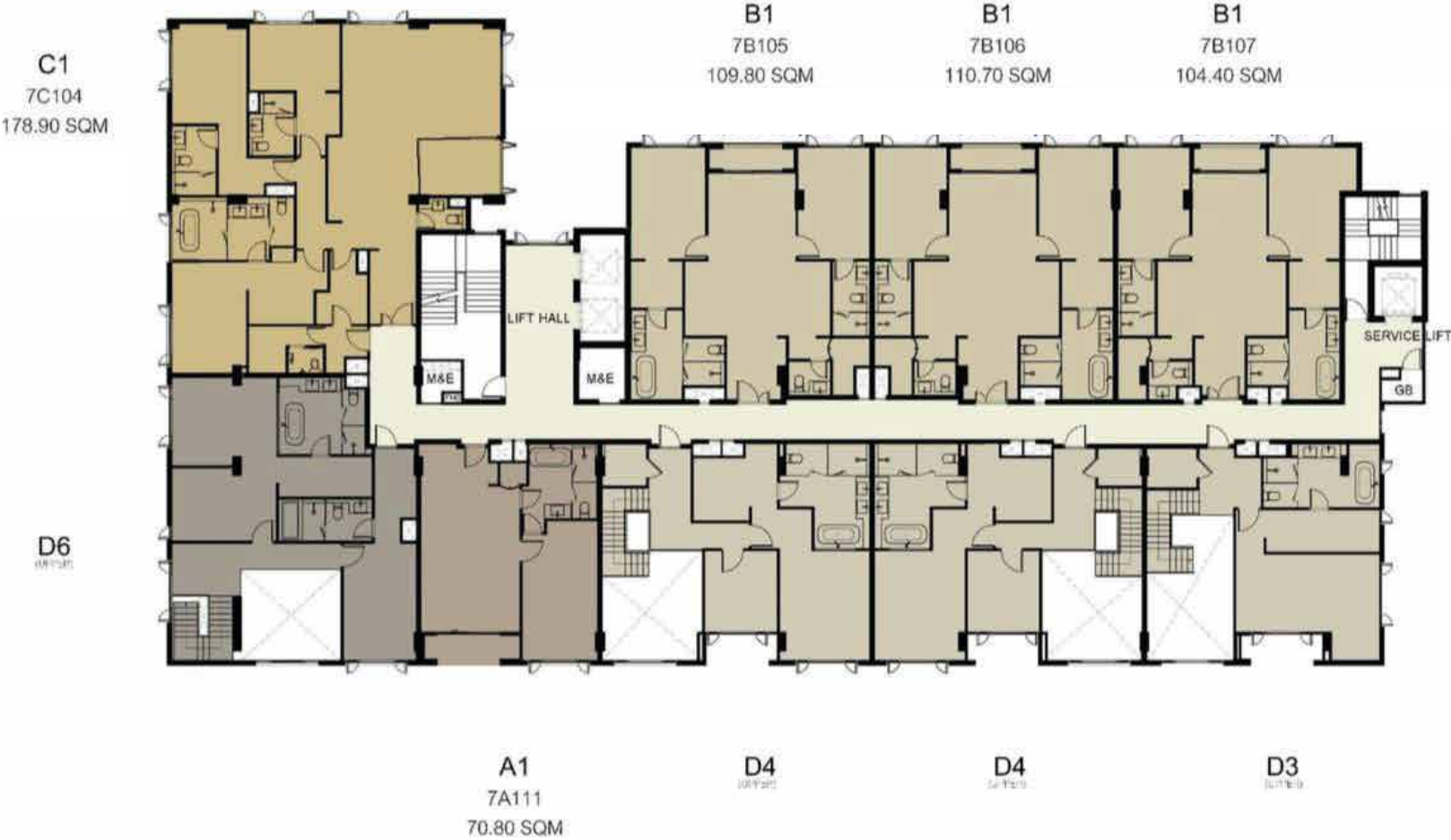
5<sup>th</sup> FLOOR

FLOOR PLAN



6<sup>th</sup> FLOOR

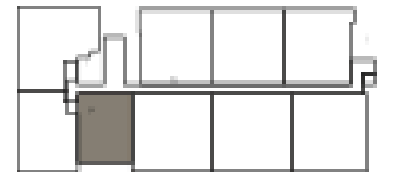
FLOOR PLAN



7<sup>th</sup> FLOOR

1 BEDROOM  
A1 77.20 SQ.M.

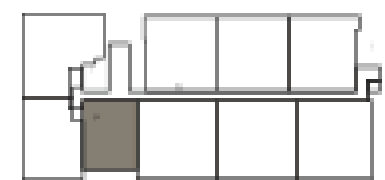
2<sup>nd</sup> – 5<sup>th</sup> FLOOR



---

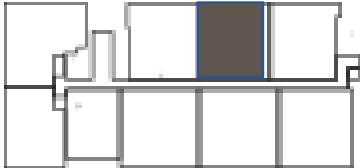
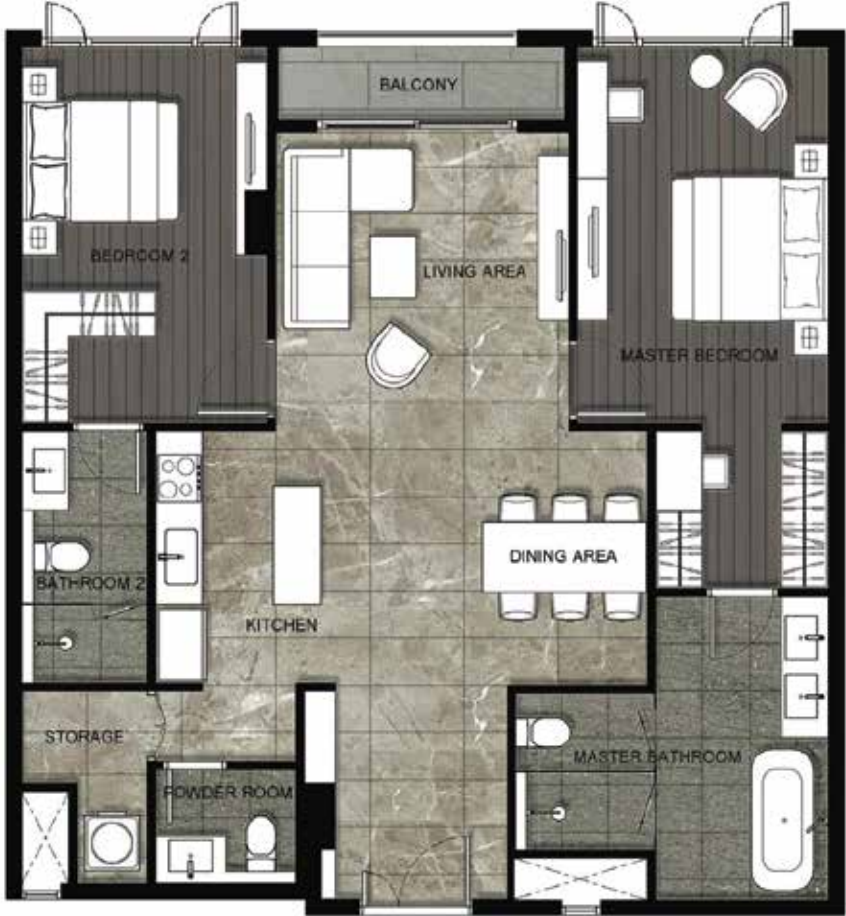
1 BEDROOM  
A1 70.80 SQ.M.

6<sup>th</sup> – 7<sup>th</sup> FLOOR



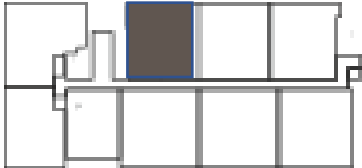
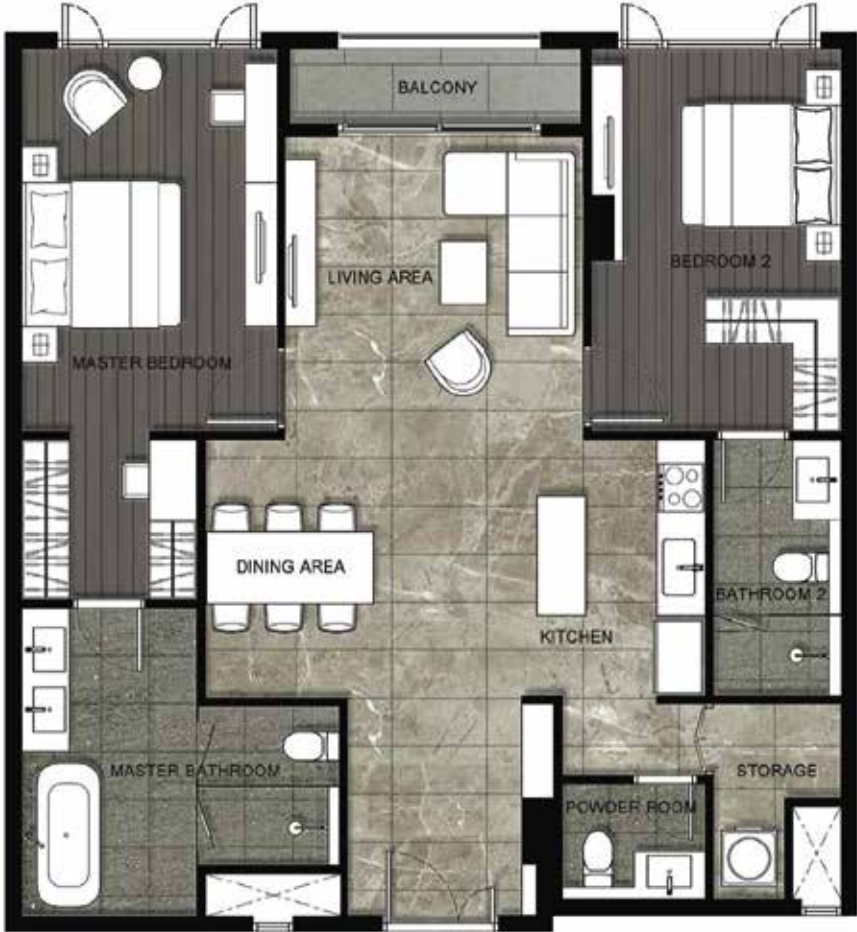
2 BEDROOM  
B1 110.70 SQ.M.

2<sup>nd</sup> – 7<sup>th</sup> FLOOR



2 BEDROOM  
B1 109.80 SQ.M.

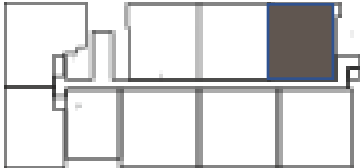
2<sup>nd</sup> – 7<sup>th</sup> FLOOR





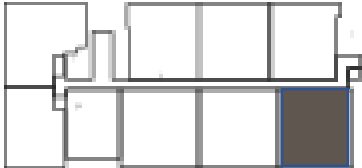
2 BEDROOM  
B1 104.40 SQ.M.

2<sup>nd</sup> – 7<sup>th</sup> FLOOR



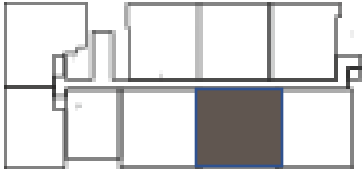
2 BEDROOM  
B2 119.20 SQ.M.

2<sup>nd</sup> – 5<sup>th</sup> FLOOR



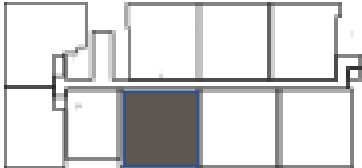
2 BEDROOM  
B3 130.30 SQ.M.

2<sup>nd</sup> – 5<sup>th</sup> FLOOR



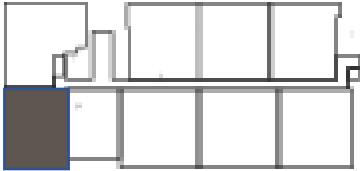
2 BEDROOM  
B3 130.70 SQ.M.

2<sup>nd</sup> – 5<sup>th</sup> FLOOR



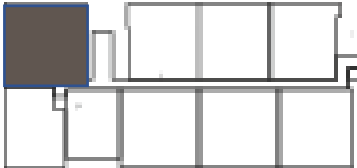
2 BEDROOM  
B4 139 SQ.M.

3<sup>rd</sup> – 5<sup>th</sup> FLOOR



3 BEDROOM  
C1 178.90 SQ.M.

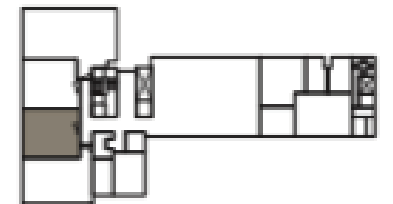
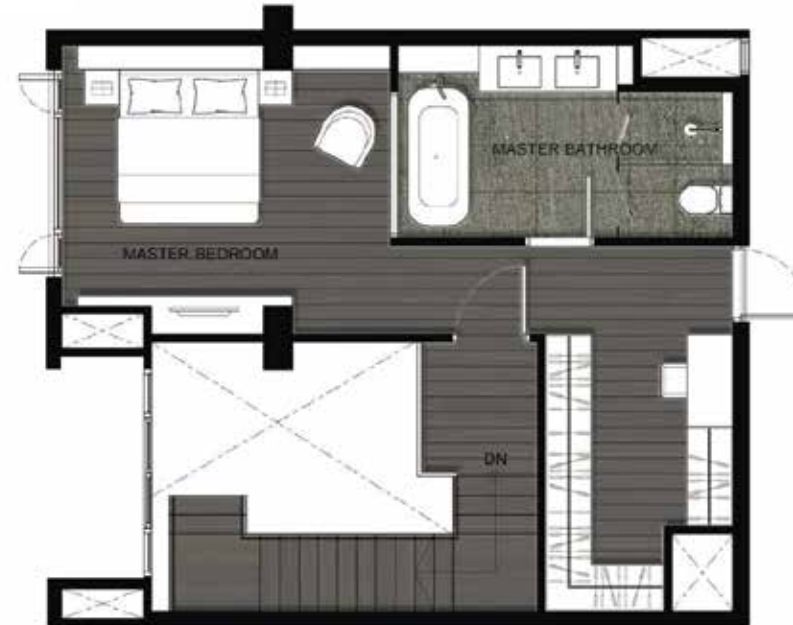
3<sup>rd</sup> – 7<sup>th</sup> FLOOR



1 BEDROOM  
D1 DUPLEX

110.70 SQ.M.

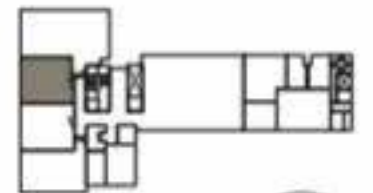
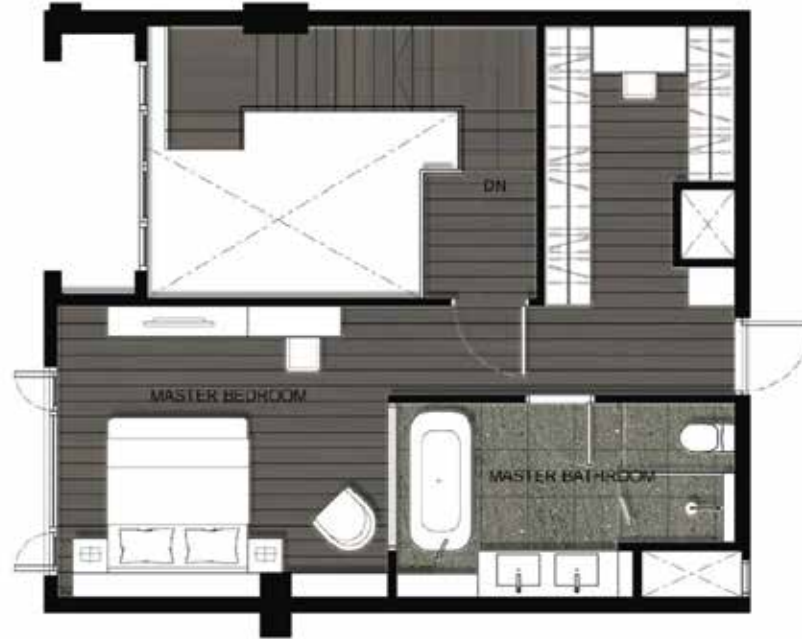
1<sup>st</sup> – 2<sup>nd</sup> FLOOR



1 BEDROOM  
D1 DUPLEX

111.10 SQ.M.

1<sup>st</sup> – 2<sup>nd</sup> FLOOR

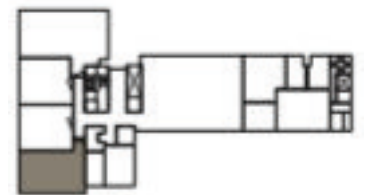
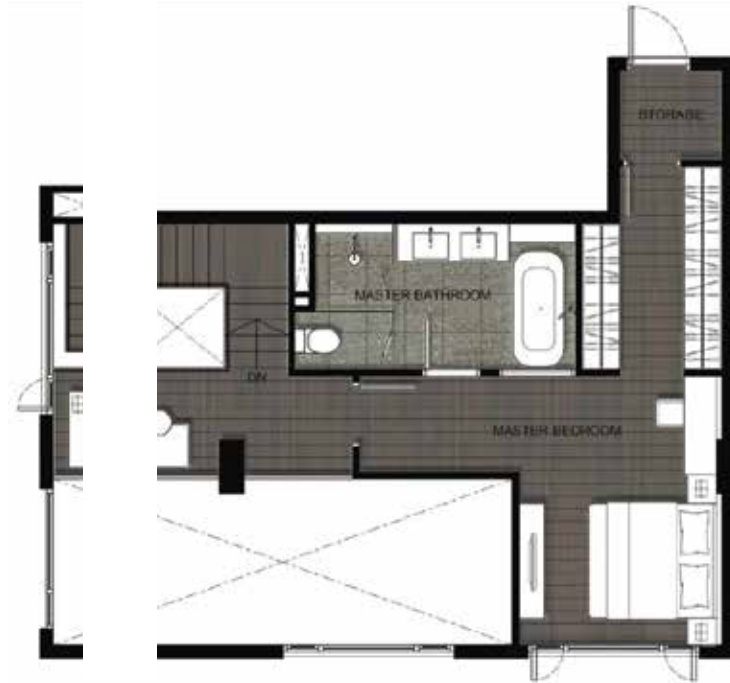




1 BEDROOM  
D2 DUPLEX

125.40 SQ.M.

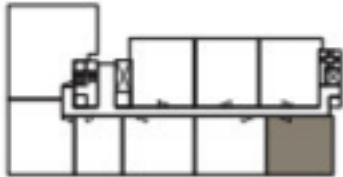
1<sup>st</sup> – 2<sup>nd</sup> FLOOR



2 BEDROOM  
D3 DUPLEX

157.90 SQ.M.

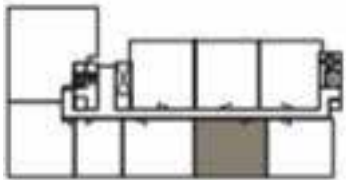
6<sup>th</sup> – 7<sup>th</sup> FLOOR



2 BEDROOM  
D4 DUPLEX

189.20 SQ.M.

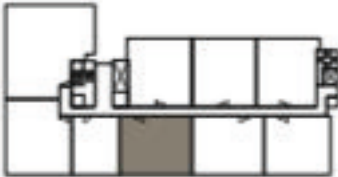
6<sup>th</sup> – 7<sup>th</sup> FLOOR



2 BEDROOM  
D4 DUPLEX

190.20 SQ.M.

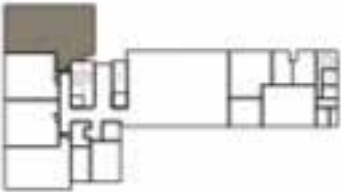
6<sup>th</sup> – 7<sup>th</sup> FLOOR



2 BEDROOM  
D5 DUPLEX

201.20 SQ.M.

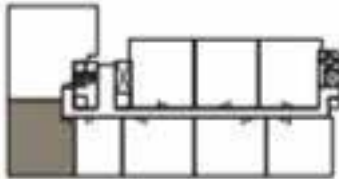
1st – 2nd FLOOR



3 BEDROOM  
D5 DUPLEX

221.60 SQ.M.

6<sup>th</sup> – 7<sup>th</sup> FLOOR



---

## ABOUT DEVELOPER

### About:

CEVAS PROPERTIES CO., LTD.

A new developer and a joint venture between Thai and Hong Kong, launched a super luxury condominium as the first project under the brand, “NIVATI” located in the heart of the vibrant precinct of Thonglor.

The company aims to launch super luxury property developments with elegant design and superb material specifications, focusing on prime location only.

### Philosophy:

The definition of luxury means different things to different people. For us, offering luxury as a way of life is the ultimate experience of a true luxury.

At CEVAS, we’re deeply entrenched in the platforms of “quality” and refinement”. We created a kind of luxury that is enjoyed by certain people and not by others, the privilege and exclusivity enjoyed by an elite and unattainable few.

With our mastery in creating the real luxury residence for sophisticated living, we are committed to deliver the authentic luxury products and services to answer every personal desire and reflect the status of the high achievement to answer the idea of “True Luxury of living”

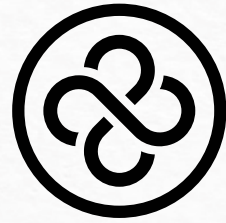
For Life must not only be lived, it must be enjoyed. It must be wholeheartedly embraced. It must be self-indulged. It must be the kind of life you’re proud to live.

Live the true luxury of life









N I V A T I

- THONGLOR 23 -